

## United States Credit Union Statistics

Year	# of CUs	# of Members	Savings (\$)	Loans (\$)	Reserves (\$)*	Assets (\$)
1939	8,036	2,251,466	161,418,740	146,234,771		190,003,852
1940	9,224	2,693,863	221,060,568	188,077,820		248,958,325
1941	10,318	3,246,763	272,570,378	216,769,541		319,180,360
1942	10,324	3,090,453				
1943	10,161	2,993,997				
1944	8,930	2,919,962	346,183,401	121,923,835	23,399,071	396,295,985
1945	8,823	2,834,488	378,021,596	127,731,216	24,410,441	415,357,464
1946	8,944	3,076,956	442,106,367	190,824,016		492,295,749
1947	9,130	3,346,709	523,028,539	283,350,246	31,200,573	589,442,397
1948	9,320	3,755,189	618,262,587	398,191,219	42,881,842	700,804,335
1949	10,062	4,101,508	717,800,039	504,380,907	43,220,068	827,043,743
1950	10,586	4,617,086	869,212,048	679,205,820	52,146,424	1,005,389,283
1951	11,278	5,204,593	1,061,646,353	745,978,990	59,488,747	1,198,175,832
1952	12,280	5,904,629	1,334,522,160	984,873,597	59,431,338	1,515,868,908
1953	13,690	6,620,739	1,671,193,208	1,312,004,180	75,060,545	1,897,677,048
1954	15,067	7,326,311	2,016,062,225	1,557,269,567	91,174,540	2,270,149,249
1955	16,192	8,126,712	2,421,180,897	1,935,160,506	109,768,596	2,742,871,319
1956	17,246	9,013,119	2,885,148,929	2,325,398,192	135,702,112	3,270,074,942
1957	18,191	9,803,425	3,354,769,741	2,777,478,527	162,781,367	3,808,647,157
1958	18,860	10,466,455	3,835,679,049	3,077,252,063		4,345,943,725
1959	19,512	11,266,587	4,435,386,487	3,708,993,962	232,084,946	5,022,517,190
1960	20,094	12,025,393	4,976,328,862	4,375,792,220	274,272,517	5,650,618,514
1961	20,604	12,869,361	5,632,793,724	4,815,726,449	325,477,040	6,379,162,748
1962	20,984	13,748,656	6,327,847,726	5,474,415,455	379,080,452	7,182,321,111
1963	21,363	14,569,126	7,164,754,622	6,168,483,752	439,591,465	8,129,523,992
1964	21,800	15,607,348	8,236,802,112	7,041,077,020	509,324,773	9,355,418,386
1965	22,109	16,731,700	9,240,580,386	8,086,125,247	589,613,249	10,542,414,323
1966	22,680	17,872,270	10,097,267,457	9,083,209,506	683,272,936	11,595,409,947
1967	23,029	19,041,980	11,095,187,387	9,866,244,461	777,628,037	12,743,939,804
1968	23,420	20,232,090	12,286,634,152	11,254,577,138	885,492,444	14,165,792,929
1969	23,866	21,570,771	13,684,679,226	12,918,517,451	1,003,280,420	15,853,754,335
1970	23,687	22,775,511	15,410,878,698	14,067,566,709	1,124,154,592	17,871,919,319
1971	23,267	24,053,001	18,225,306,109	16,106,531,802	1,243,660,463	20,970,996,004
1972	23,098	25,697,397	21,447,085,718	18,616,182,848	1,395,954,251	24,599,158,871
1973	22,982	27,440,700	24,515,288,827	21,697,130,876	1,569,202,014	28,229,234,202
1974	22,940	29,449,999	27,340,765,177	24,344,673,425	1,778,136,544	31,660,454,007
1975	22,677	31,320,514	32,800,093,742	28,105,792,632	2,015,031,219	37,553,618,342
1976	22,581	33,584,532	38,562,426,927	33,924,929,520	2,267,173,407	44,300,714,741
1977	22,382	36,642,639	45,991,889,987	41,210,982,961	2,543,738,540	53,038,203,482
1978	22,203	40,756,348	52,721,486,088	49,431,792,365	2,750,971,927	61,015,864,335
1979	21,981	41,264,730	55,831,856,984	51,642,440,945	2,943,383,522	64,144,737,461
1980	21,465	43,930,569	61,723,872,203	48,702,532,518	3,117,492,423	68,974,187,213
1981	20,784	45,187,932	64,622,016,421	50,369,242,040	3,338,585,992	72,291,353,652
1982	19,897	46,568,525	74,847,339,395	51,488,778,006	3,560,090,940	82,680,345,337
1983	19,095	47,446,666	89,692,525,075	60,517,179,568	3,950,596,830	98,327,338,130
1984	18,375	49,210,277	102,568,089,497	75,441,711,632	4,645,646,265	112,959,851,175
1985	17,654	51,907,540	125,812,989,386	85,123,373,879	5,307,769,485	137,461,880,742
1986	16,928	54,947,680	152,859,787,081	96,518,177,522	6,028,274,191	166,298,580,752
1987	16,274	57,227,653	166,018,238,783	110,734,496,913	6,832,298,841	181,735,396,893
1988	15,709	58,687,790	178,510,590,922	126,619,220,283	8,586,568,934	196,512,057,169
1989	15,144	60,490,312	186,618,676,000	136,800,707,000	9,468,498,000	205,444,162,000
1990	14,549	61,610,959	196,736,733,817	138,589,070,694	15,887,871,658	216,874,123,751
1991	13,967	62,267,904	219,381,108,275	142,096,427,185	18,364,360,802	242,175,150,077
1992	13,378	63,845,767	243,420,883,195	146,054,731,446	21,657,235,541	269,654,237,765
1993	12,949	65,436,212	255,651,537,151	157,842,648,215	25,557,359,708	286,577,172,968
1994	12,540	67,389,848	263,641,599,130	181,943,980,618	28,376,707,704	298,948,522,243
1995	12,209	69,302,489	278,833,145,963	198,378,397,702	32,427,827,062	316,177,980,519
1996	11,880	71,381,765	295,359,689,856	220,195,439,836	36,002,212,396	336,392,230,811
1997	11,658	73,468,908	315,687,072,246	238,655,295,696	39,704,359,522	360,585,001,925
1998	11,392	75,616,617	349,311,288,438	252,343,742,990	43,249,567,031	398,925,417,065
1999	11,016	77,516,502	367,007,508,581	279,023,371,926	46,144,424,583	422,567,345,691
2000	10,684	79,751,873	389,625,325,804	309,367,084,014	51,078,901,458	449,798,819,390
2001	10,355	81,589,260	449,013,076,760	330,894,122,753	55,909,787,489	514,690,786,450
2002	10,041	83,345,147	500,105,582,541	355,232,836,169	62,038,036,012	574,687,252,270
2003	9,710	84,847,962	545,474,622,195	388,360,705,549	67,207,469,042	629,133,631,169
2004	9,346	86,050,841	574,960,114,471	428,279,488,972	72,483,548,128	668,104,238,527
2005	9,011	87,014,017	596,596,152,841	473,762,398,224	77,295,394,701	700,389,720,885
2006	8,662	88,221,913	621,123,590,996	510,773,172,375	83,427,786,896	732,497,663,906
2007	8,396	89,324,410	652,848,992,866	543,733,410,825	88,050,183,050	776,588,347,121
2008	7,966	89,913,600	691,766,141,442	575,814,330,010	89,051,268,596	825,802,402,779

\* Beginning 1990, Reserves includes undivided earnings.

## United States State Credit Union Statistics

Year	# of CUs	# of Members	Savings (\$)	Loans (\$)	Reserves (\$)*	Assets (\$)
1939	4,771	1,420,143	119,376,358	109,657,053		143,585,577
1940	5,529	1,652,096	156,261,964	133,102,951		179,083,873
1941	6,203	1,859,916	176,522,002	148,119,414		216,357,800
1942	6,010	1,753,436				
1943	6,319	1,700,742				
1944	5,156	1,626,510	213,563,683	87,790,556	19,298,221	253,068,354
1945	5,061	1,617,863	237,407,249	92,575,717	19,499,633	262,132,455
1946	5,173	1,774,894	282,388,327	134,023,079		319,129,290
1947	5,277	1,900,794	330,618,496	191,978,049	24,806,689	380,066,826
1948	5,266	2,127,315	383,258,047	260,550,360	34,952,943	442,477,741
1949	5,569	2,283,886	432,843,652	318,542,943	33,252,473	510,726,464
1950	5,607	2,493,212	507,370,389	415,528,734	39,228,902	599,640,622
1951	5,885	2,744,768	604,388,735	446,328,252	43,214,595	693,613,295
1952	6,366	3,056,893	737,386,653	569,984,012	38,877,762	853,711,660
1953	7,125	3,372,539	903,989,076	738,338,980	48,897,431	1,043,836,040
1954	7,852	3,733,529	1,085,036,648	875,501,110	57,774,233	1,237,379,208
1955	8,397	4,100,833	1,286,540,095	1,072,450,790	68,280,945	1,476,014,249
1956	8,906	4,517,402	1,519,678,401	1,276,742,328	82,587,077	1,741,742,068
1957	9,466	4,913,346	1,766,732,200	1,520,987,859	96,604,038	2,021,144,712
1958	9,840	5,264,688	2,025,182,396	1,698,563,348		2,312,739,042
1959	10,076	5,632,392	2,362,264,039	2,043,685,363	131,130,626	2,671,666,116
1960	10,201	5,948,319	2,634,485,007	2,355,745,999	152,355,217	2,983,619,667
1961	10,344	6,340,190	2,962,315,287	2,572,411,786	179,467,785	3,354,224,000
1962	10,364	6,756,303	3,311,057,362	2,916,001,613	204,985,913	3,756,470,542
1963	10,420	7,087,300	3,716,313,965	3,260,248,115	231,993,155	4,217,688,785
1964	10,534	7,533,625	4,224,586,112	3,695,586,020	263,313,773	4,801,834,386
1965	10,579	8,111,902	4,708,102,386	4,225,533,247	299,566,249	5,383,462,323
1966	10,752	8,624,669	5,160,140,457	4,763,674,506	344,887,936	5,934,365,947
1967	10,833	9,195,498	5,682,863,387	5,192,316,461	388,773,037	6,545,194,804
1968	10,850	9,755,180	6,310,554,152	5,865,008,138	438,896,372	7,275,094,929
1969	10,961	10,302,956	6,983,308,226	6,598,049,451	490,280,420	8,073,830,335
1970	10,725	10,846,073	7,796,582,698	7,111,429,709	540,157,592	9,027,531,319
1971	10,564	11,390,590	9,044,542,109	8,051,301,802	597,828,463	10,437,943,004
1972	10,404	12,167,414	10,512,427,718	9,211,922,848	672,092,251	12,109,093,871
1973	10,308	12,830,127	11,941,998,827	10,611,659,876	754,655,014	13,652,623,202
1974	10,208	13,593,653	13,020,364,177	11,653,019,425	866,988,544	15,013,892,007
1975	9,958	14,267,399	15,348,876,245	13,287,237,238	987,344,219	17,439,362,056
1976	9,844	15,017,399	17,655,777,927	15,745,495,520	1,089,731,407	20,141,259,741
1977	9,655	16,275,622	20,792,579,987	18,835,070,961	1,223,836,540	23,831,192,482
1978	9,468	17,589,744	23,428,765,088	22,254,782,365	1,392,777,927	26,934,159,335
1979	9,266	18,552,892	24,909,112,984	23,513,280,945	1,511,944,522	28,641,183,461
1980	9,059	19,462,285	27,599,675,203	22,592,061,518	1,639,791,423	31,109,601,213
1981	8,841	19,782,935	29,254,207,421	23,290,756,040	1,718,989,992	32,939,317,652
1982	8,502	20,494,284	33,532,478,395	23,575,461,006	1,788,325,940	37,230,035,337
1983	8,143	20,693,784	39,833,684,075	27,345,243,568	1,946,054,830	43,881,851,130
1984	7,843	21,062,729	44,739,080,736	33,337,997,201	2,196,944,936	49,333,136,196
1985	7,544	22,362,727	54,307,741,823	36,914,337,532	2,425,295,691	59,293,760,858
1986	7,182	23,934,767	64,943,288,098	41,251,904,672	2,718,382,221	70,856,855,843
1987	6,889	24,434,933	69,715,114,211	46,674,776,027	3,109,901,899	76,595,182,809
1988	6,600	24,284,126	74,134,712,785	52,909,237,827	3,766,911,032	82,011,635,198
1989	6,333	24,878,053	76,966,037,433	56,528,602,948	4,778,595,655	84,778,102,176
1990	5,802	25,363,486	78,843,387,149	55,558,811,129	6,135,489,253	86,799,492,990
1991	5,757	25,173,520	89,182,054,402	57,919,136,822	7,483,417,550	98,195,877,777
1992	5,479	25,719,770	97,783,870,959	58,704,588,495	8,720,888,382	107,587,900,606
1993	5,255	26,241,752	102,108,710,084	63,182,427,705	10,241,550,120	113,683,746,171
1994	5,045	26,550,603	103,415,700,234	71,854,289,331	11,171,353,645	116,415,011,850
1995	4,881	27,129,662	108,533,479,748	77,864,151,174	12,633,696,378	122,400,032,247
1996	4,731	27,822,759	114,399,718,002	86,078,064,586	13,921,406,721	129,712,656,900
1997	4,681	29,972,494	127,863,635,330	98,551,179,889	15,968,887,350	145,480,151,714
1998	4,583	31,752,584	146,660,667,652	107,494,651,930	17,891,770,713	167,021,342,642
1999	4,453	33,586,238	160,218,114,707	124,435,490,368	19,812,843,566	184,188,083,802
2000	4,352	35,868,799	179,437,895,552	145,516,085,404	22,969,880,790	206,915,598,576
2001	4,237	37,770,399	213,811,704,462	160,567,795,671	25,976,774,870	244,568,137,860
2002	4,091	38,778,087	238,288,925,338	172,450,281,548	28,957,065,898	273,452,339,485
2003	3,935	38,690,844	253,989,865,155	184,742,727,998	30,804,323,229	292,549,042,296
2004	3,774	39,194,756	266,642,167,169	203,722,528,438	33,089,667,788	309,403,413,703
2005	3,619	39,392,905	274,764,843,055	223,572,620,611	35,072,091,198	322,562,493,979
2006	3,477	39,967,080	287,209,607,350	239,731,854,586	37,750,645,913	338,366,969,700
2007	3,361	40,847,663	303,748,065,605	253,972,610,413	40,103,214,253	359,010,024,848
2008	3,121	40,784,670	318,396,097,011	265,953,573,532	40,526,293,171	377,534,432,061

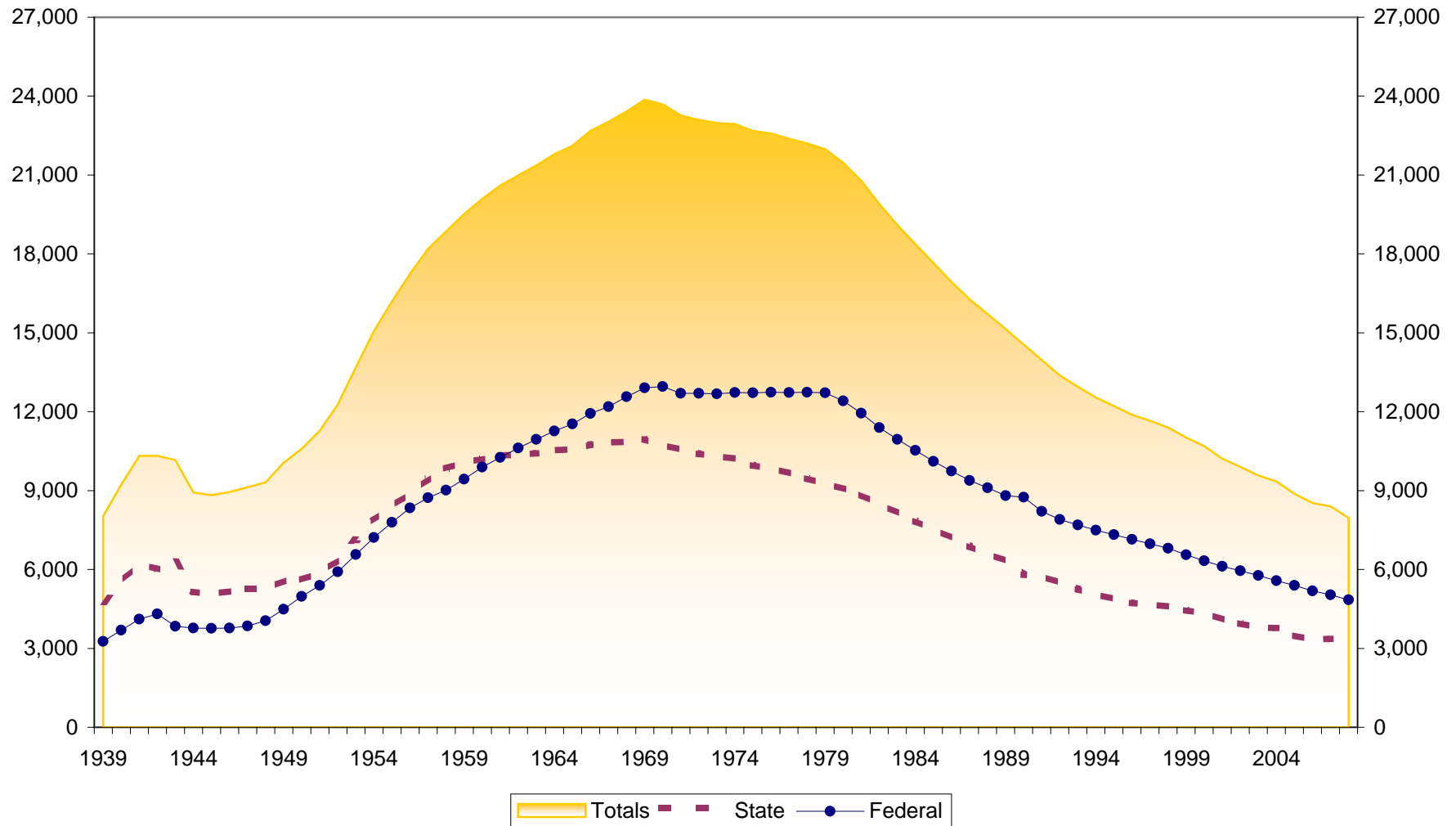
\* Beginning 1990, Reserves includes undivided earnings.

## United States Federal Credit Union Statistics

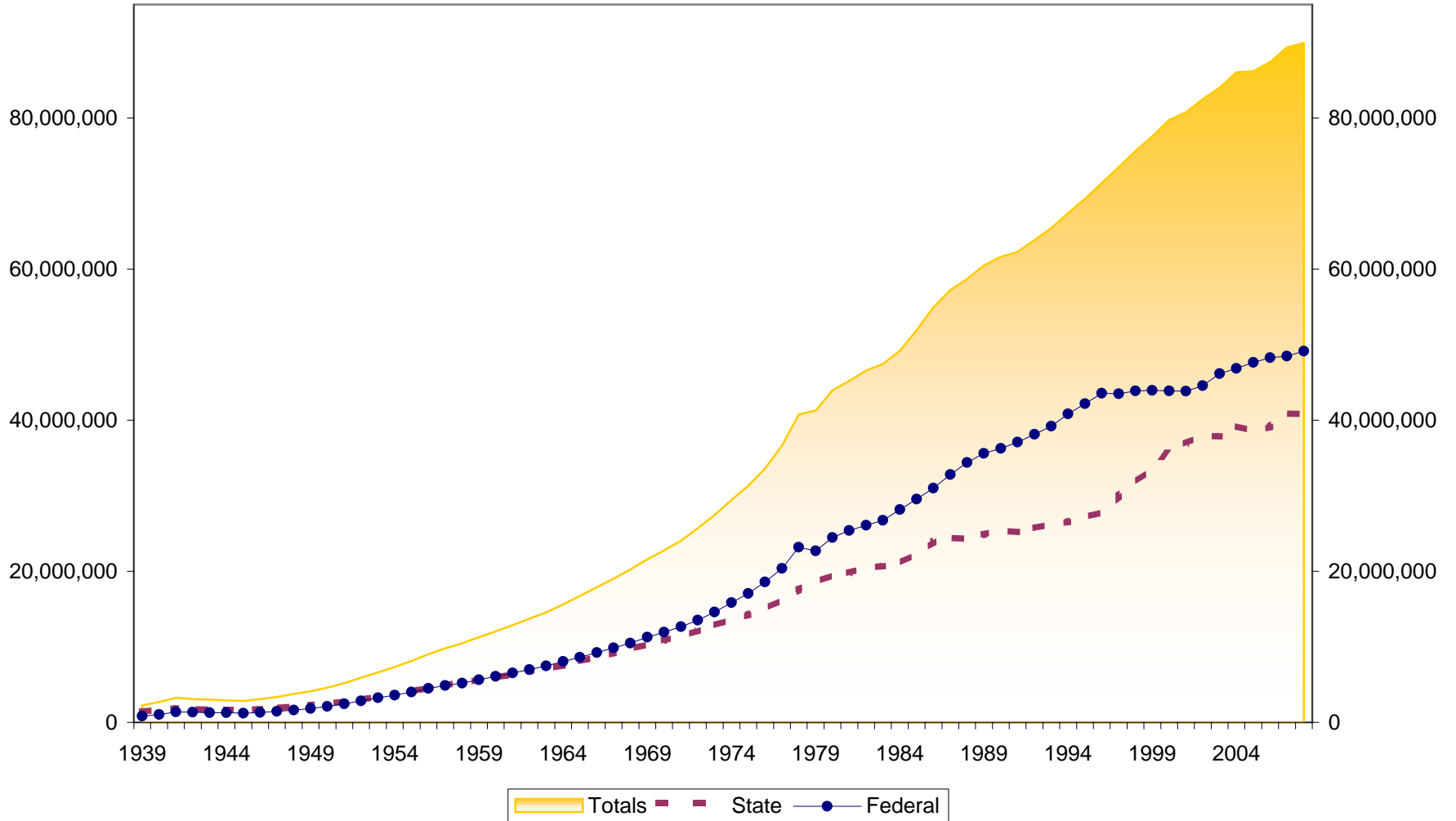
Year	# of CUs	# of Members	Savings (\$)	Loans (\$)	Reserves (\$)*	Assets (\$)
1939	3,265	831,323	42,042,382	36,577,718	1,107,571	46,418,275
1940	3,695	1,041,767	64,798,604	54,974,869		69,874,452
1941	4,115	1,386,847	96,048,376	68,650,127		102,822,560
1942	4,314	1,337,017	108,685,155	42,452,258	3,450,287	118,354,079
1943	3,842	1,293,255	116,166,173	34,965,084		
1944	3,774	1,293,452	132,619,718	34,133,279	4,100,850	143,227,631
1945	3,762	1,216,625	140,614,347	35,155,499	4,910,808	153,225,009
1946	3,771	1,302,062	159,718,040	56,800,937		173,166,459
1947	3,853	1,445,915	192,410,043	91,372,197	6,393,884	209,375,571
1948	4,054	1,627,874	235,004,540	137,640,859	7,928,899	258,326,594
1949	4,493	1,817,622	284,956,387	185,837,964	9,967,595	316,317,279
1950	4,979	2,123,874	361,841,659	263,677,086	12,917,522	405,748,661
1951	5,393	2,459,825	457,257,618	299,650,738	16,274,152	504,562,537
1952	5,914	2,847,736	597,135,507	414,889,585	20,553,576	662,157,248
1953	6,565	3,248,200	767,204,132	573,665,200	26,163,114	853,841,008
1954	7,215	3,592,782	931,025,577	681,768,457	33,400,307	1,032,770,041
1955	7,795	4,025,879	1,134,640,802	862,709,716	41,487,651	1,266,857,070
1956	8,340	4,495,717	1,365,470,528	1,048,655,864	53,115,035	1,528,332,874
1957	8,725	4,890,079	1,588,037,541	1,256,490,668	66,177,329	1,787,502,445
1958	9,020	5,201,767	1,810,496,653	1,378,688,715	80,687,301	2,033,204,683
1959	9,436	5,634,195	2,073,122,448	1,665,308,599	100,954,320	2,350,851,074
1960	9,893	6,077,074	2,341,843,855	2,020,046,221	121,917,300	2,666,998,847
1961	10,260	6,529,171	2,670,478,437	2,243,314,663	146,009,255	3,024,938,748
1962	10,620	6,992,353	3,016,790,364	2,558,413,842	174,094,539	3,425,850,569
1963	10,943	7,481,826	3,448,440,657	2,908,235,637	207,598,310	3,911,835,207
1964	11,266	8,073,723	4,012,216,000	3,345,491,000	246,011,000	4,553,584,000
1965	11,530	8,619,798	4,532,478,000	3,860,592,000	290,047,000	5,158,952,000
1966	11,928	9,247,601	4,937,127,000	4,319,535,000	338,385,000	5,661,044,000
1967	12,196	9,846,482	5,412,324,000	4,673,928,000	388,855,000	6,198,745,000
1968	12,570	10,476,910	5,976,080,000	5,389,569,000	446,596,072	6,890,698,000
1969	12,905	11,267,815	6,701,371,000	6,320,468,000	513,000,000	7,779,924,000
1970	12,962	11,929,438	7,614,296,000	6,956,137,000	583,997,000	8,844,388,000
1971	12,703	12,662,411	9,180,764,000	8,055,230,000	645,832,000	10,533,053,000
1972	12,694	13,529,983	10,934,658,000	9,404,260,000	723,862,000	12,490,065,000
1973	12,674	14,610,573	12,573,290,000	11,085,471,000	814,547,000	14,576,611,000
1974	12,732	15,856,346	14,320,401,000	12,691,654,000	911,148,000	16,646,562,000
1975	12,719	17,053,115	17,451,217,497	14,818,555,394	1,027,687,000	20,114,256,286
1976	12,737	18,567,133	20,906,649,000	18,179,434,000	1,177,442,000	24,159,455,000
1977	12,727	20,367,017	25,199,310,000	22,375,912,000	1,319,902,000	29,207,011,000
1978	12,735	23,166,604	29,292,721,000	27,177,010,000	1,358,194,000	34,081,705,000
1979	12,715	22,711,838	30,922,744,000	28,129,160,000	1,431,439,000	35,503,554,000
1980	12,406	24,468,284	34,124,197,000	26,110,471,000	1,477,701,000	37,864,586,000
1981	11,943	25,404,997	35,367,809,000	27,078,486,000	1,619,596,000	39,352,036,000
1982	11,395	26,074,241	41,314,861,000	27,913,317,000	1,771,765,000	45,450,310,000
1983	10,952	26,752,882	49,858,841,000	33,171,936,000	2,004,542,000	54,445,487,000
1984	10,532	28,147,548	57,829,008,761	42,103,714,431	2,448,701,329	63,626,714,979
1985	10,110	29,544,813	71,505,247,563	48,209,036,347	2,882,473,794	78,168,119,884
1986	9,746	31,012,913	87,916,498,983	55,266,272,850	3,309,891,970	95,441,724,909
1987	9,385	32,792,720	96,303,124,572	64,059,720,886	3,722,396,942	105,140,214,084
1988	9,109	34,403,664	104,375,878,137	73,709,982,456	4,819,657,902	114,500,421,971
1989	8,811	35,612,259	109,652,638,567	80,272,104,052	4,689,902,345	120,666,059,824
1990	8,747	36,247,473	117,893,346,668	83,030,259,565	9,752,382,405	130,074,630,761
1991	8,210	37,094,384	130,199,053,873	84,177,290,363	10,880,943,252	143,979,272,300
1992	7,899	38,125,997	145,637,012,236	87,350,142,951	12,936,347,159	162,066,337,159
1993	7,694	39,194,460	153,542,827,067	94,660,220,510	15,315,809,588	172,893,426,797
1994	7,495	40,839,245	160,225,898,896	110,089,691,287	17,205,354,059	182,533,510,393
1995	7,328	42,172,827	170,299,666,215	120,514,246,528	19,794,130,684	193,777,948,272
1996	7,149	43,559,006	180,959,971,854	134,117,375,250	22,080,805,675	206,679,573,911
1997	6,977	43,496,414	187,823,436,916	140,104,115,807	23,735,472,172	215,104,850,211
1998	6,809	43,864,033	202,650,620,786	144,849,091,060	25,357,796,318	231,904,074,423
1999	6,563	43,930,264	206,789,393,874	154,587,881,558	26,331,581,017	238,379,261,889
2000	6,332	43,883,074	210,187,430,252	163,850,998,610	28,109,020,668	242,883,220,814
2001	6,118	43,818,861	235,201,372,298	170,326,327,082	29,933,012,619	270,122,648,590
2002	5,950	44,567,060	261,816,657,203	182,782,554,621	33,080,970,114	301,234,912,785
2003	5,775	46,157,118	291,484,757,040	203,617,977,551	36,403,145,813	336,584,588,873
2004	5,572	46,856,085	308,317,947,302	224,556,960,534	39,393,880,340	358,700,824,824
2005	5,392	47,621,112	321,831,309,786	250,189,777,613	42,223,303,503	377,827,226,906
2006	5,185	48,254,833	333,913,983,646	271,041,317,789	45,677,140,983	394,130,694,206
2007	5,035	48,476,747	349,100,927,261	289,760,800,412	47,946,968,797	417,578,322,273
2008	4,845	49,128,930	373,370,044,431	309,860,756,478	48,524,975,425	448,267,970,718

\* Beginning 1990, Reserves includes undivided earnings.

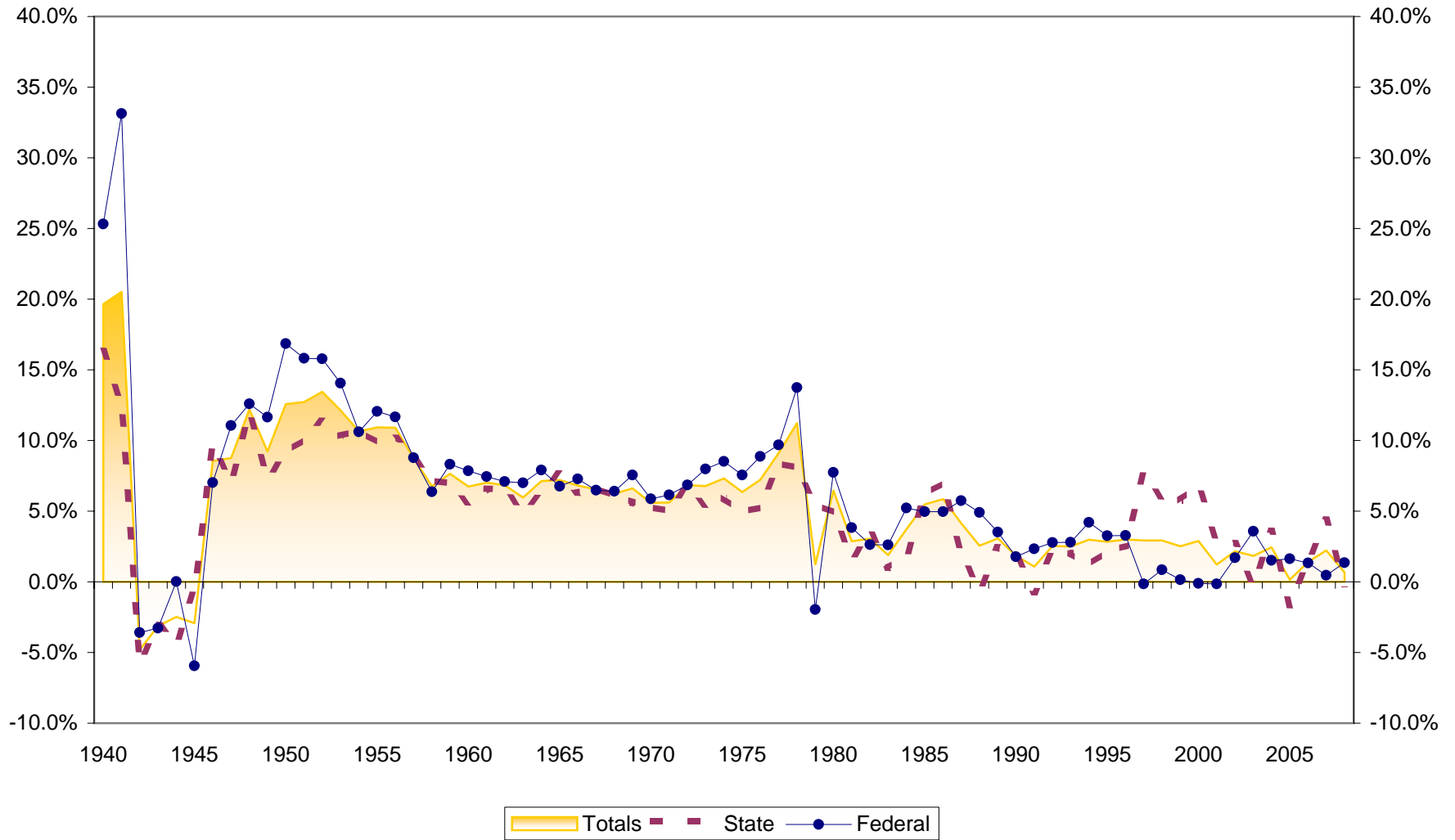
# Number of U.S. Credit Unions 1939-2008



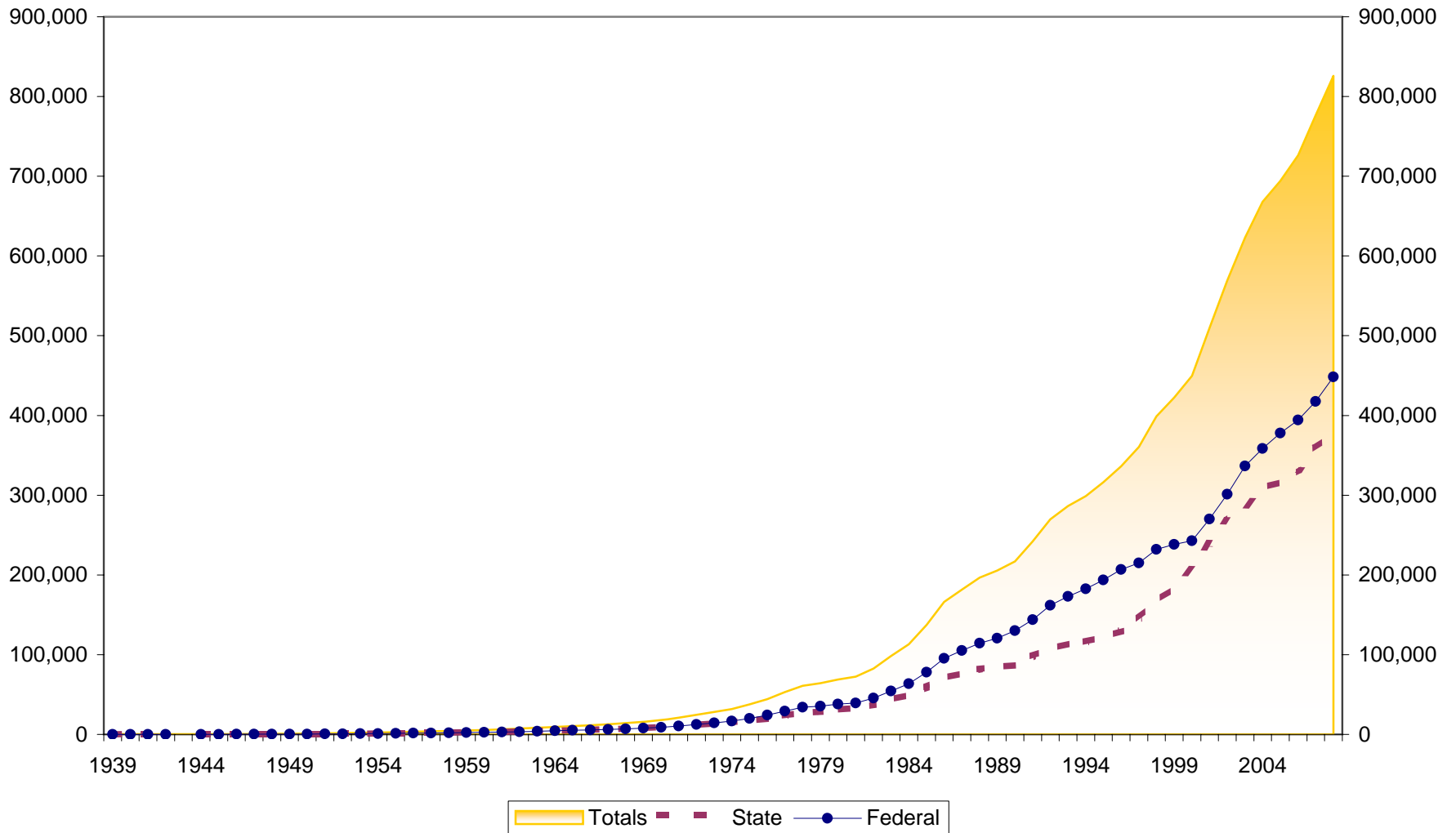
# Number of Members at U.S. Credit Unions 1939-2008



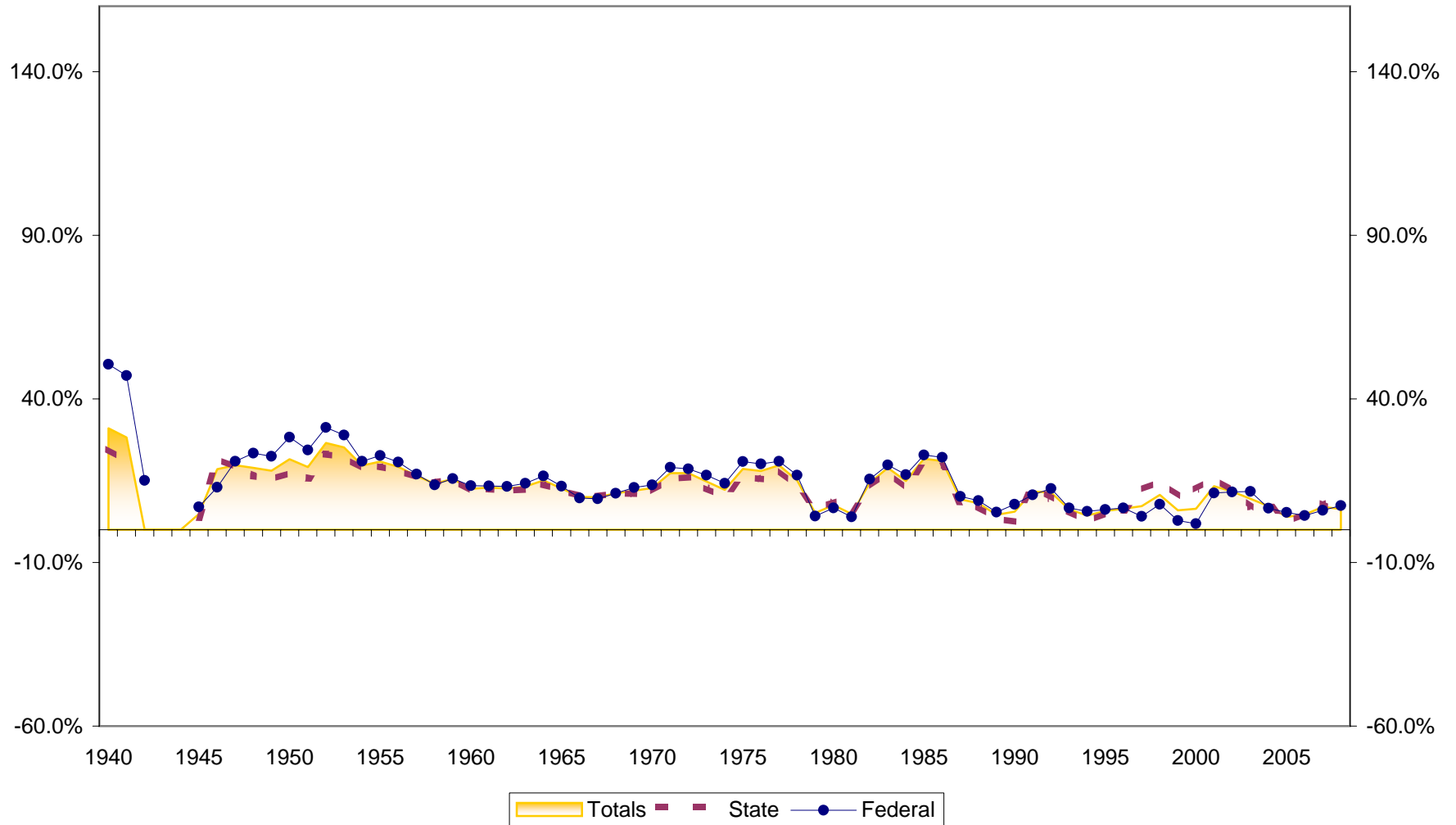
# Membership Growth at U.S. Credit Unions 1940-2008



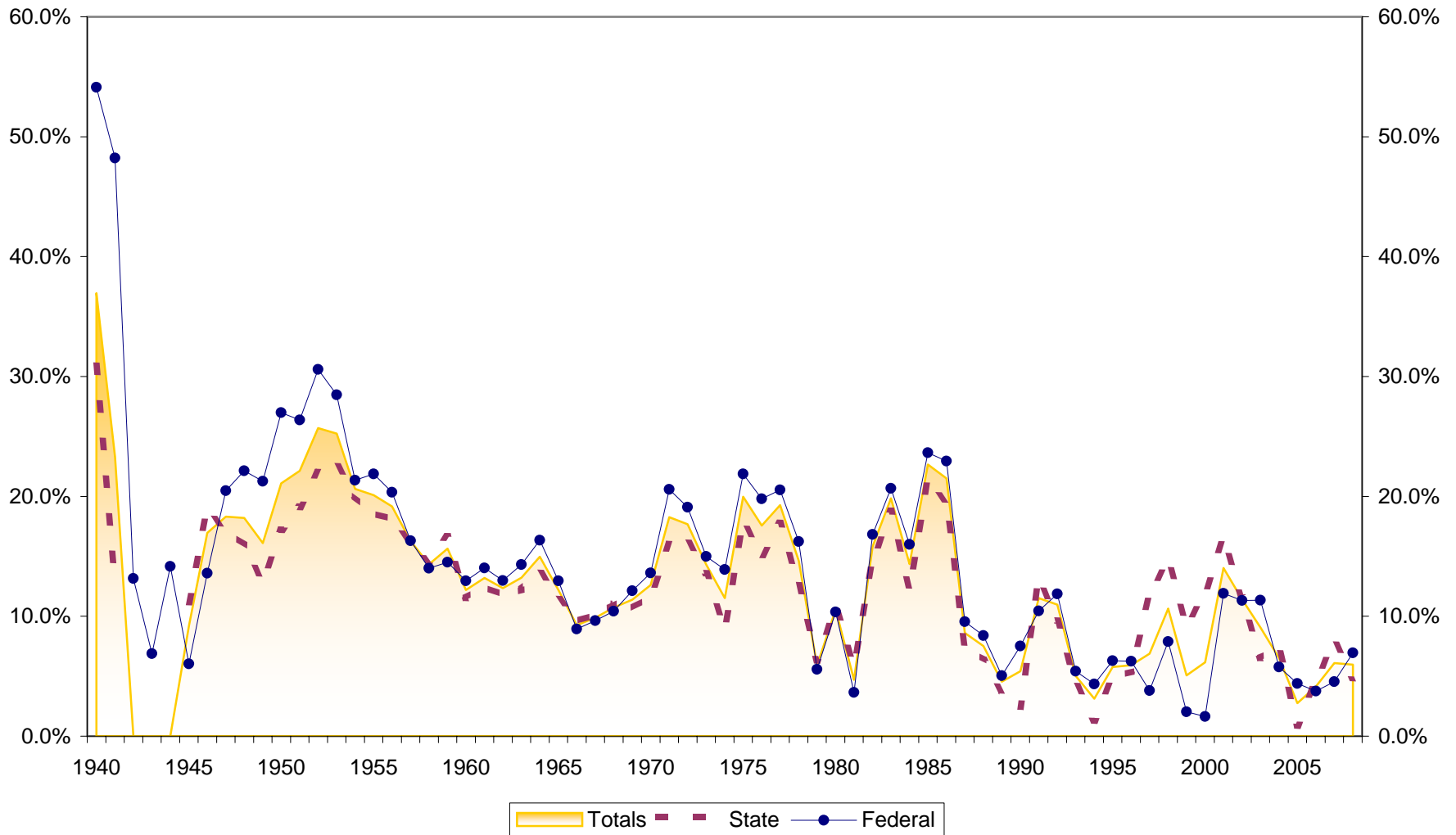
# Assets at U.S. Credit Unions (in \$Millions) 1939-2008



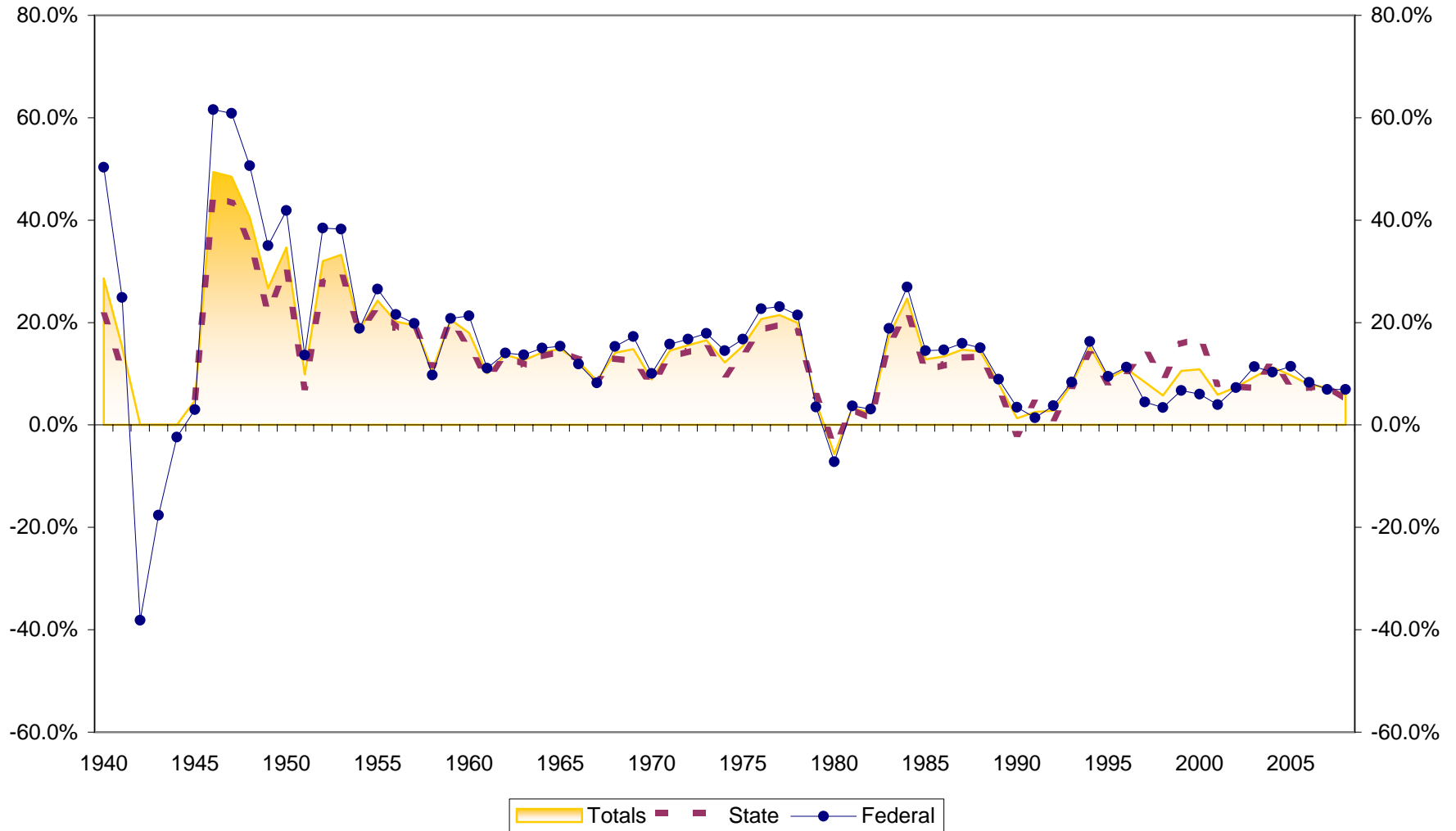
# Asset Growth at U.S. Credit Unions 1940-2008



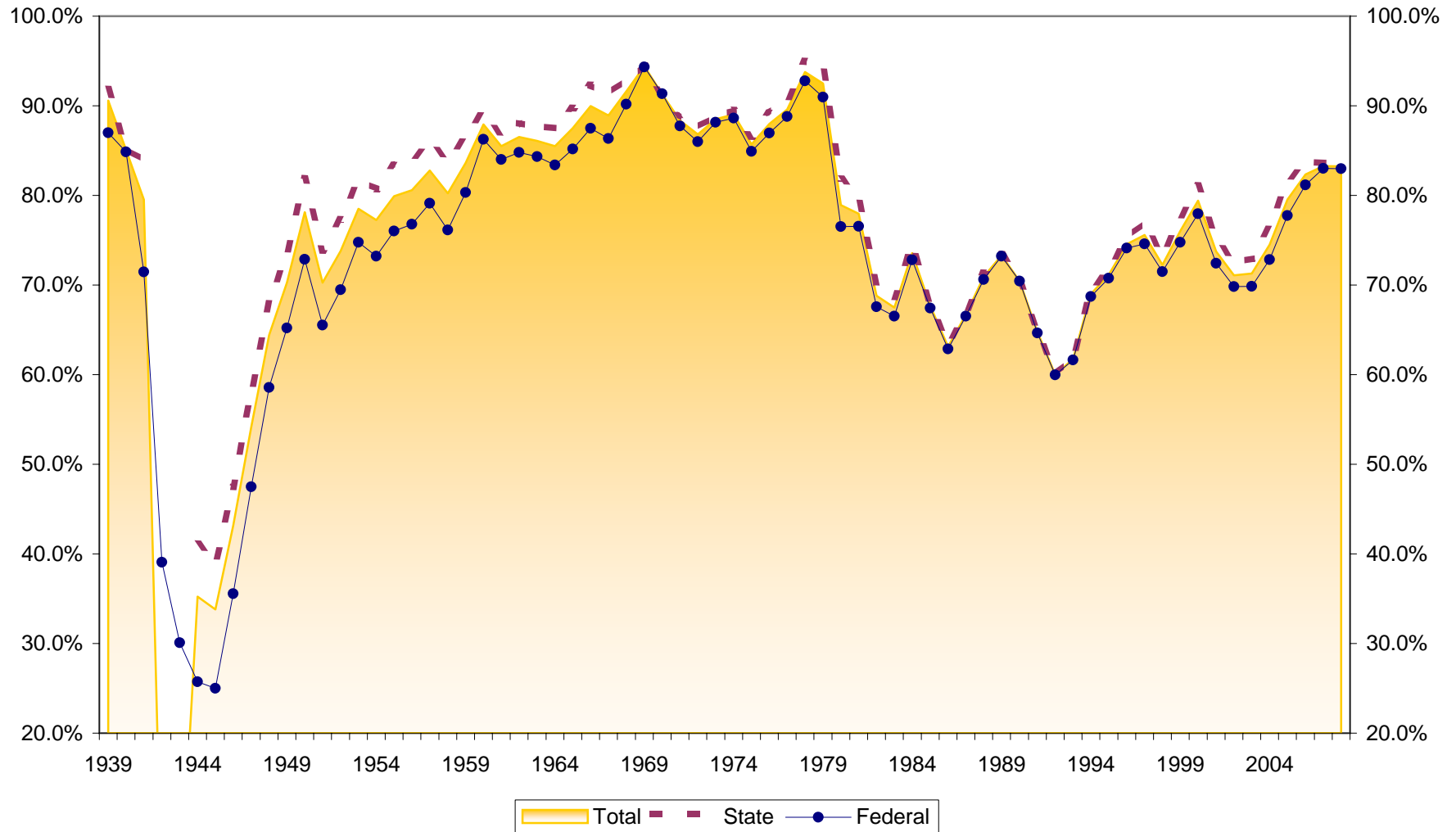
# Savings Growth at U.S. Credit Unions 1940-2008



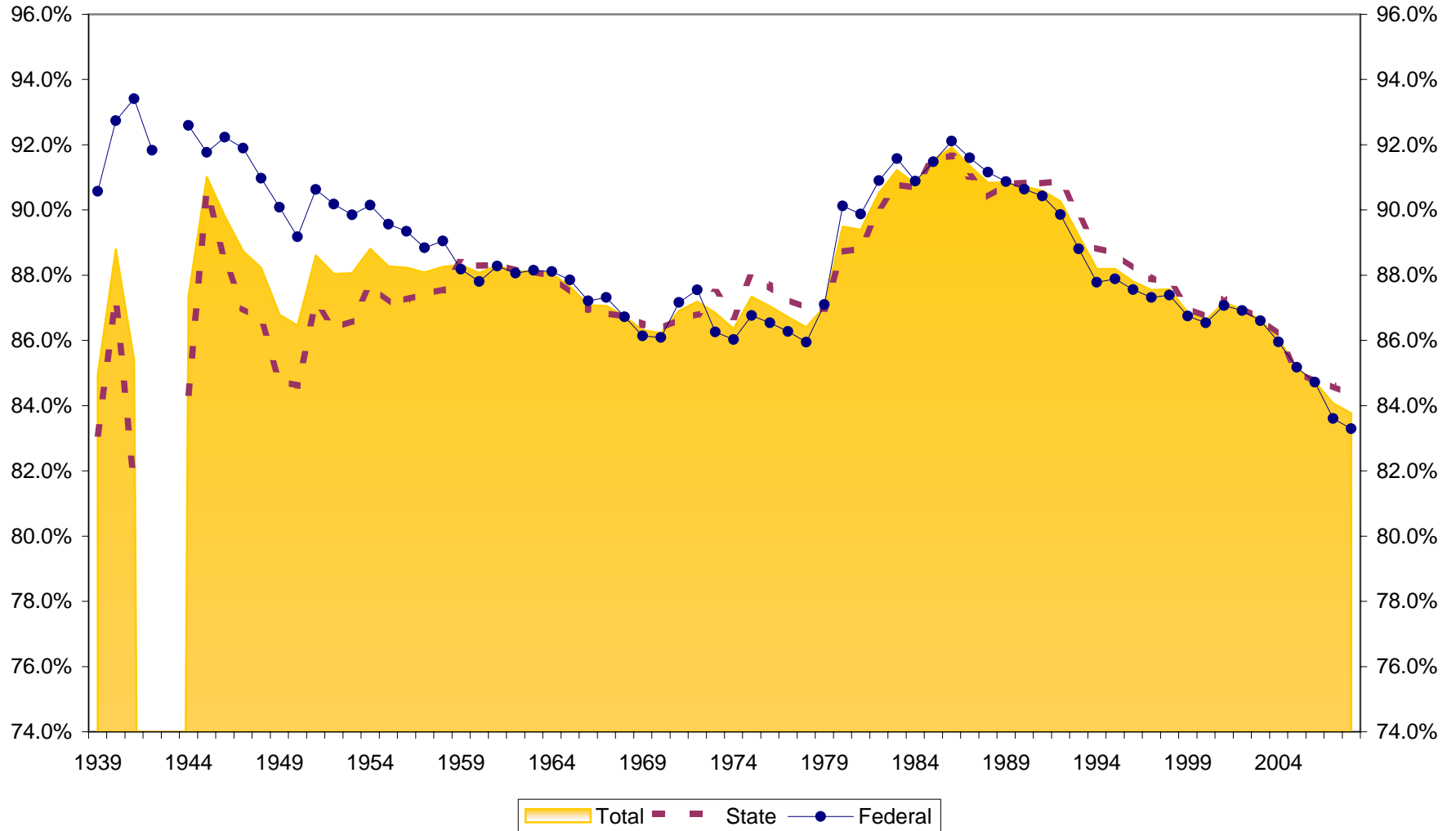
# Loan Growth at U.S. Credit Unions 1940-2008



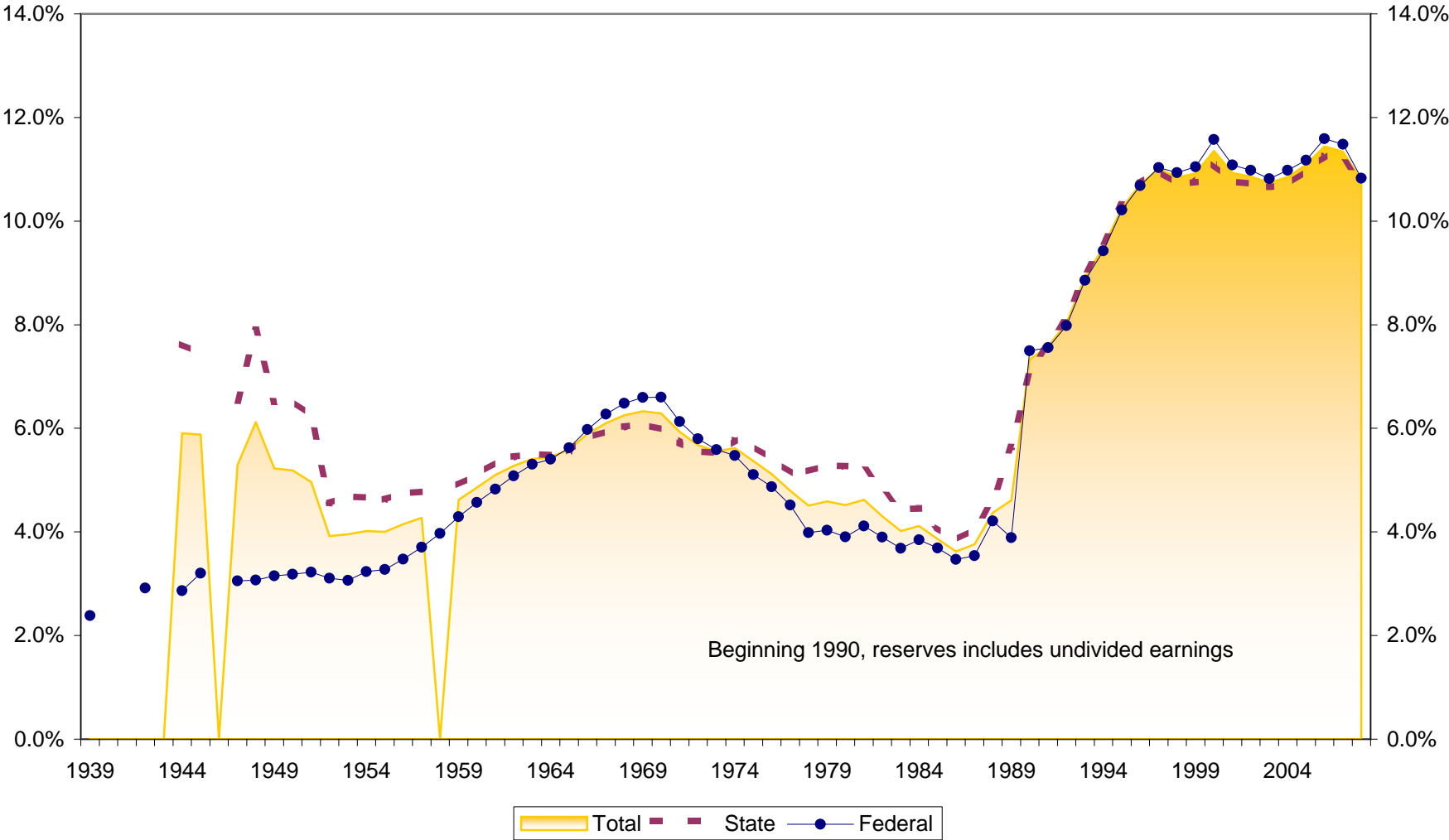
# Loans to Savings Ratio at U.S. Credit Unions 1939-2008



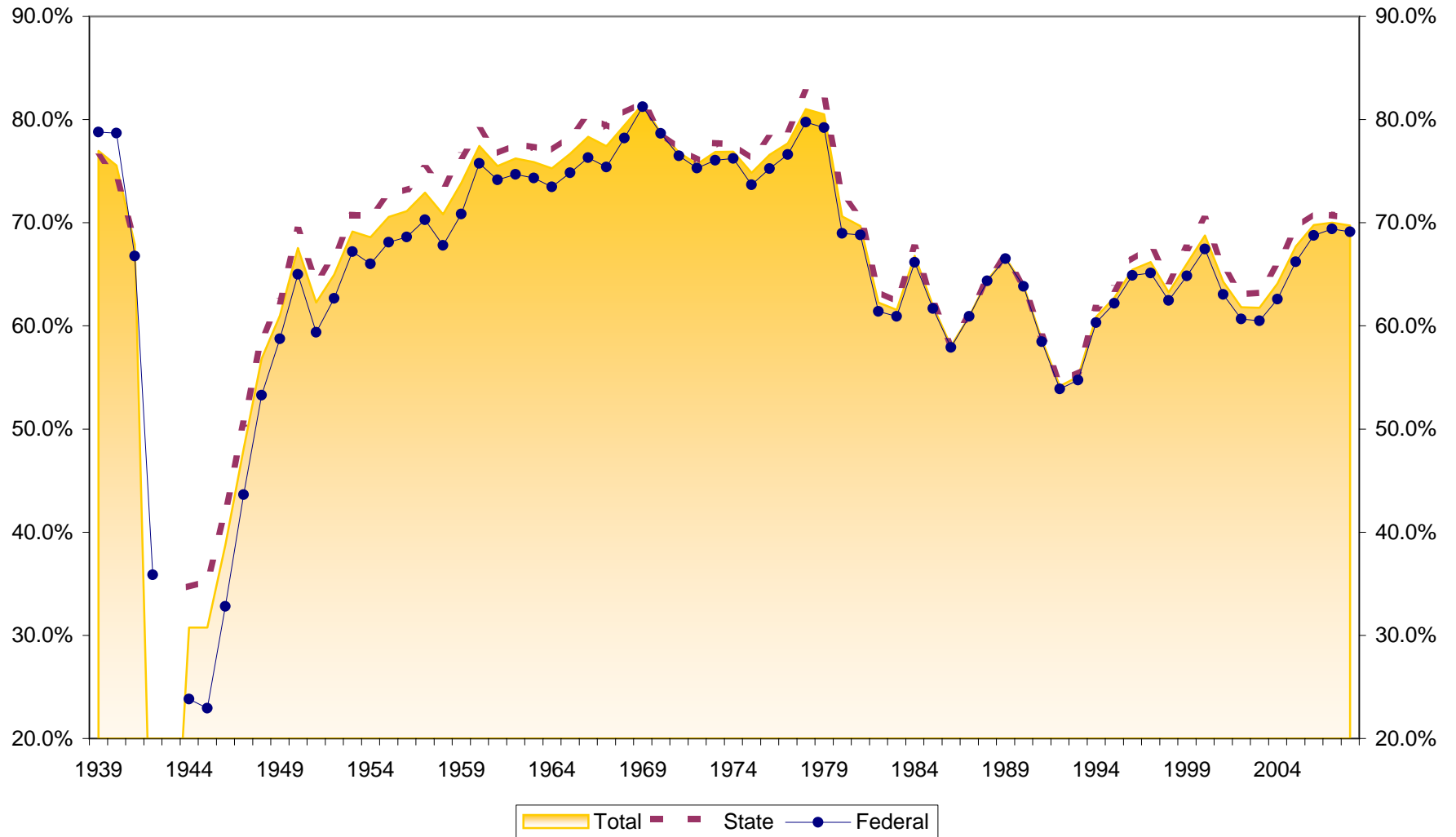
# Savings to Assets at U.S. Credit Unions 1939-2008



# Reserves to Assets at U.S. Credit Unions 1939-2008



# Loans to Assets at U.S. Credit Unions 1939-2008



# Dollar Asset Growth at U.S. Credit Unions (in \$Millions) 1940-2008

