

## Tennessee Totals Statistics

Year	# of CUs	# of Members	Savings (\$)	Loans (\$)	Reserves (\$)*	Assets (\$)
1939	130	35,305	2,201,136	2,136,291		2,665,899
1940	145	40,122	2,715,992	2,548,360		3,245,513
1941	156	43,049	3,307,854	2,676,693		3,916,410
1942	160	39,065		1,680,836		
1943	165	35,216		1,413,518		
1944	127	34,567	3,613,033	1,428,126		4,254,506
1945	117	33,903	4,285,476	1,578,663	509,368	4,939,793
1946	117	38,678	5,159,872	2,469,374	538,589	5,895,987
1947	121	46,344	6,481,077	3,695,429	624,525	7,337,095
1948	130	54,356	8,299,559	5,398,316	830,711	9,385,255
1949	150	63,041	10,294,587	7,324,347	834,427	11,731,435
1950	161	74,547	13,312,738	11,451,081	1,033,895	15,938,068
1951	175	81,238	16,515,336	13,102,863	1,183,841	19,552,294
1952	191	92,740	21,413,298	16,210,488	845,124	24,464,239
1953	219	104,599	27,302,823	21,346,452	1,036,687	30,400,949
1954	239	121,157	33,408,250	25,922,839	1,301,583	37,501,983
1955	265	135,215	41,126,397	32,810,717	1,430,817	46,104,026
1956	293	147,976	48,911,544	39,337,349	1,768,362	54,594,261
1957	310	160,287	58,536,616	48,617,438	2,204,651	65,562,810
1958	323	169,492	67,613,818	54,174,921	2,741,350	75,757,806
1959	351	187,831	79,518,408	67,083,713	3,410,691	89,940,351
1960	371	193,373	90,555,394	81,584,593	4,892,462	102,674,489
1961	385	211,247	103,284,292	88,759,995	4,850,622	116,210,788
1962	411	233,252	116,595,719	103,270,827	5,915,851	131,641,329
1963	424	254,525	132,737,518	117,649,459	7,124,091	150,694,020
1964	434	276,048	154,005,479	136,018,935	8,158,696	174,748,738
1965	453	299,183	177,302,481	159,413,191	9,638,761	201,190,343
1966	483	323,385	199,070,337	181,546,751	11,367,858	227,250,627
1967	501	345,415	219,200,059	197,285,063	13,114,872	254,150,409
1968	520	372,749	246,951,314	228,771,092	15,233,218	286,849,943
1969	559	396,411	282,073,126	257,267,925	17,307,147	320,431,027
1970	577	423,876	312,777,446	275,519,406	20,545,791	354,936,451
1971	589	416,411	375,926,263	325,184,457	23,507,306	424,561,043
1972	596	494,276	438,261,927	379,696,773	26,409,795	499,171,795
1973	617	540,596	500,133,662	439,491,209	29,544,172	579,196,782
1974	612	558,575	549,147,342	476,533,374	34,355,512	642,622,828
1975	588	580,713	656,722,295	544,123,229	38,789,758	755,672,083
1976	577	647,544	773,516,000	667,320,663	43,262,502	907,603,033
1977	563	699,247	949,809,445	798,736,464	52,560,978	1,110,748,690
1978	557	768,925	1,102,341,690	982,167,285	59,230,915	1,286,778,889
1979	550	786,842	1,177,766,717	1,035,153,081	64,187,554	1,353,561,953
1980	545	829,262	1,285,479,928	986,441,498	65,431,668	1,449,125,863
1981	534	856,038	1,353,207,984	991,552,901	68,719,910	1,502,443,889
1982	507	860,446	1,522,514,465	1,012,084,220	75,088,570	1,692,372,691
1983	477	879,017	1,860,501,236	1,216,764,289	88,018,231	1,982,797,065
1984	461	929,530	2,078,753,686	1,538,479,021	105,219,907	2,317,516,821
1985	429	989,927	2,688,967,246	1,777,674,727	122,204,825	2,964,711,654
1986	404	1,059,743	3,099,517,681	2,040,083,784	140,892,890	3,315,740,990
1987	384	1,125,035	3,374,929,671	2,340,533,901	155,674,963	3,689,358,326
1988	370	1,168,783	3,558,162,030	2,592,201,353	186,361,887	3,926,770,309
1989	363	1,259,364	4,012,176,339	2,711,951,866	199,986,912	4,445,072,629
1990	347	1,203,003	3,924,348,021	2,731,144,064	342,947,879	4,321,771,339
1991	332	1,196,492	4,184,124,013	2,728,955,855	375,842,972	4,606,587,161
1992	322	1,214,494	4,516,515,405	2,783,649,327	440,941,658	4,998,425,765
1993	305	1,252,455	4,750,074,045	3,074,426,769	514,452,170	5,309,722,552
1994	286	1,306,027	4,800,361,111	3,535,694,964	576,107,968	5,441,894,606
1995	278	1,380,199	5,095,825,495	3,777,178,612	661,362,451	5,815,528,422
1996	272	1,378,287	5,312,019,745	4,120,288,254	733,148,797	6,114,344,218
1997	265	1,403,918	5,543,187,223	4,360,815,876	807,677,797	6,424,507,400
1998	257	1,431,890	6,039,949,812	4,665,758,512	875,524,454	7,003,670,772
1999	252	1,448,707	6,283,245,361	5,017,831,690	931,430,884	7,380,634,096
2000	248	1,474,446	6,601,029,592	5,383,392,635	1,026,180,213	7,780,264,667
2001	237	1,500,619	7,469,292,374	5,508,036,048	1,110,349,771	8,786,535,242
2002	227	1,513,937	7,935,206,411	5,615,997,975	1,206,814,799	9,464,590,627
2003	216	1,523,249	8,552,548,417	5,990,428,305	1,288,061,064	10,156,230,811
2004	210	1,543,695	8,879,250,392	6,375,765,300	1,366,199,934	10,539,258,568
2005	205	1,583,621	9,282,296,361	7,126,676,633	1,454,337,492	11,067,854,987
2006	200	1,628,361	9,929,082,894	7,745,354,943	1,566,392,523	11,811,968,497
2007	190	1,685,065	10,554,434,652	8,360,840,303	1,676,419,050	12,572,944,397
2008	186	1,737,459	11,360,371,079	8,981,533,329	1,744,536,592	13,446,452,028

\* Beginning 1990, Reserves includes undivided earnings.

## Tennessee State Statistics

Year	# of CUs	# of Members	Savings (\$)	Loans (\$)	Reserves (\$)*	Assets (\$)
1939	77	24,367	1,811,136	1,784,291		2,232,899
1940	86	26,538	2,157,992	2,049,360		2,630,513
1941	95	26,895	2,528,854	2,084,693		3,059,410
1942	102	24,878		1,327,836		
1943	108	22,115		1,113,518		
1944	73	21,978	2,654,033	1,136,126		3,193,506
1945	65	22,091	3,152,476	1,237,663	459,788	3,712,793
1946	65	24,942	3,838,210	1,883,184	484,089	4,451,265
1947	66	29,118	4,709,473	2,727,859	559,811	5,420,405
1948	71	33,263	5,806,848	3,802,108	746,542	6,680,532
1949	77	36,073	6,837,255	4,933,106	722,005	7,958,538
1950	76	39,941	8,070,840	7,420,130	869,979	10,194,900
1951	80	40,960	9,309,641	8,045,138	953,924	11,693,016
1952	95	46,424	11,537,028	9,226,208	542,230	13,746,861
1953	115	53,022	14,757,049	12,015,376	640,533	16,746,912
1954	129	63,808	18,419,547	15,143,163	768,264	20,998,790
1955	136	70,551	22,709,268	19,251,469	760,976	25,661,753
1956	145	74,979	26,738,893	22,169,834	879,447	29,989,379
1957	156	81,191	31,959,190	27,317,896	1,045,918	35,880,809
1958	165	85,219	36,949,094	30,763,164	1,326,273	41,502,942
1959	185	93,815	42,939,761	38,263,488	1,484,373	48,662,046
1960	195	93,929	49,242,023	45,534,051	2,500,000	55,923,755
1961	201	105,663	55,425,955	49,786,525	1,972,028	62,213,084
1962	215	116,018	62,178,408	57,280,404	2,382,186	69,786,934
1963	229	129,305	70,213,282	65,806,173	2,831,194	79,506,964
1964	242	145,258	82,011,479	75,740,935	3,046,696	92,818,738
1965	264	163,533	95,128,481	90,830,191	3,610,761	107,647,343
1966	293	180,844	108,856,337	104,878,751	4,359,858	123,651,627
1967	316	198,079	120,286,059	115,426,063	5,171,872	139,839,409
1968	335	219,844	141,256,314	138,000,092	6,301,218	164,399,943
1969	364	243,983	168,743,126	159,321,925	7,510,147	189,291,027
1970	387	266,441	190,023,446	172,446,406	9,283,791	212,582,451
1971	398	249,973	226,872,263	205,979,457	11,442,306	252,356,043
1972	406	320,852	264,474,927	242,736,773	13,391,795	298,574,795
1973	420	349,192	298,147,662	278,433,209	15,297,172	340,310,782
1974	411	352,606	321,502,342	297,951,374	18,228,512	373,253,828
1975	394	365,017	378,074,295	342,293,229	21,109,758	428,608,083
1976	384	402,359	435,761,000	418,634,663	23,964,502	505,519,033
1977	376	429,139	529,738,445	486,109,464	30,425,978	609,288,690
1978	367	455,295	611,436,690	582,550,285	35,750,915	705,751,889
1979	360	481,396	649,191,717	608,007,081	39,242,554	745,808,953
1980	364	493,489	700,295,928	591,540,498	42,220,668	798,183,863
1981	357	504,710	729,139,984	600,968,901	45,637,910	816,222,889
1982	336	509,042	837,767,465	615,054,220	52,641,570	943,319,691
1983	312	525,605	1,043,501,236	708,664,289	62,096,231	1,083,997,065
1984	301	550,943	1,126,460,520	896,461,051	74,681,691	1,261,877,440
1985	280	581,793	1,517,338,202	1,003,123,800	85,568,000	1,667,677,434
1986	262	618,533	1,691,753,154	1,131,519,780	97,748,663	1,787,531,121
1987	248	641,593	1,847,844,742	1,313,451,176	107,289,072	2,021,387,170
1988	238	662,906	1,925,009,699	1,454,147,274	123,423,340	2,140,393,842
1989	233	730,062	2,309,215,000	1,498,374,000	136,192,000	2,578,051,000
1990	219	656,059	2,089,362,020	1,482,671,972	193,775,563	2,310,187,146
1991	210	643,025	2,208,179,427	1,459,204,467	207,906,325	2,440,176,107
1992	202	641,284	2,383,798,355	1,450,657,097	240,063,503	2,645,837,467
1993	187	684,390	2,461,949,172	1,551,334,044	276,367,925	2,761,545,788
1994	173	682,059	2,463,705,800	1,732,213,346	306,511,694	2,803,039,552
1995	167	727,785	2,593,411,102	1,867,327,368	352,067,480	2,974,480,186
1996	163	704,002	2,718,172,711	2,059,285,195	392,098,269	3,143,502,134
1997	160	743,261	2,895,371,384	2,252,775,318	436,004,865	3,368,195,044
1998	155	754,705	3,175,864,387	2,478,641,171	472,263,328	3,701,123,522
1999	151	755,862	3,290,932,334	2,673,893,756	501,636,158	3,921,894,762
2000	148	767,621	3,461,576,242	2,887,600,323	553,851,319	4,130,113,941
2001	140	770,868	3,879,043,284	2,952,512,727	599,105,781	4,642,628,606
2002	135	771,241	4,142,924,117	2,999,441,582	652,293,551	5,053,590,907
2003	128	773,067	4,463,076,422	3,211,232,940	691,022,126	5,394,893,281
2004	124	777,464	4,627,629,469	3,402,150,170	730,808,770	5,577,928,017
2005	121	762,790	4,665,844,271	3,635,283,295	743,352,089	5,639,844,689
2006	117	779,942	4,998,965,854	3,941,005,882	796,049,460	6,013,973,986
2007	111	781,608	5,257,977,562	4,187,092,784	847,106,938	6,342,473,302
2008	110	803,850	5,625,370,698	4,440,717,004	870,180,507	6,710,551,866

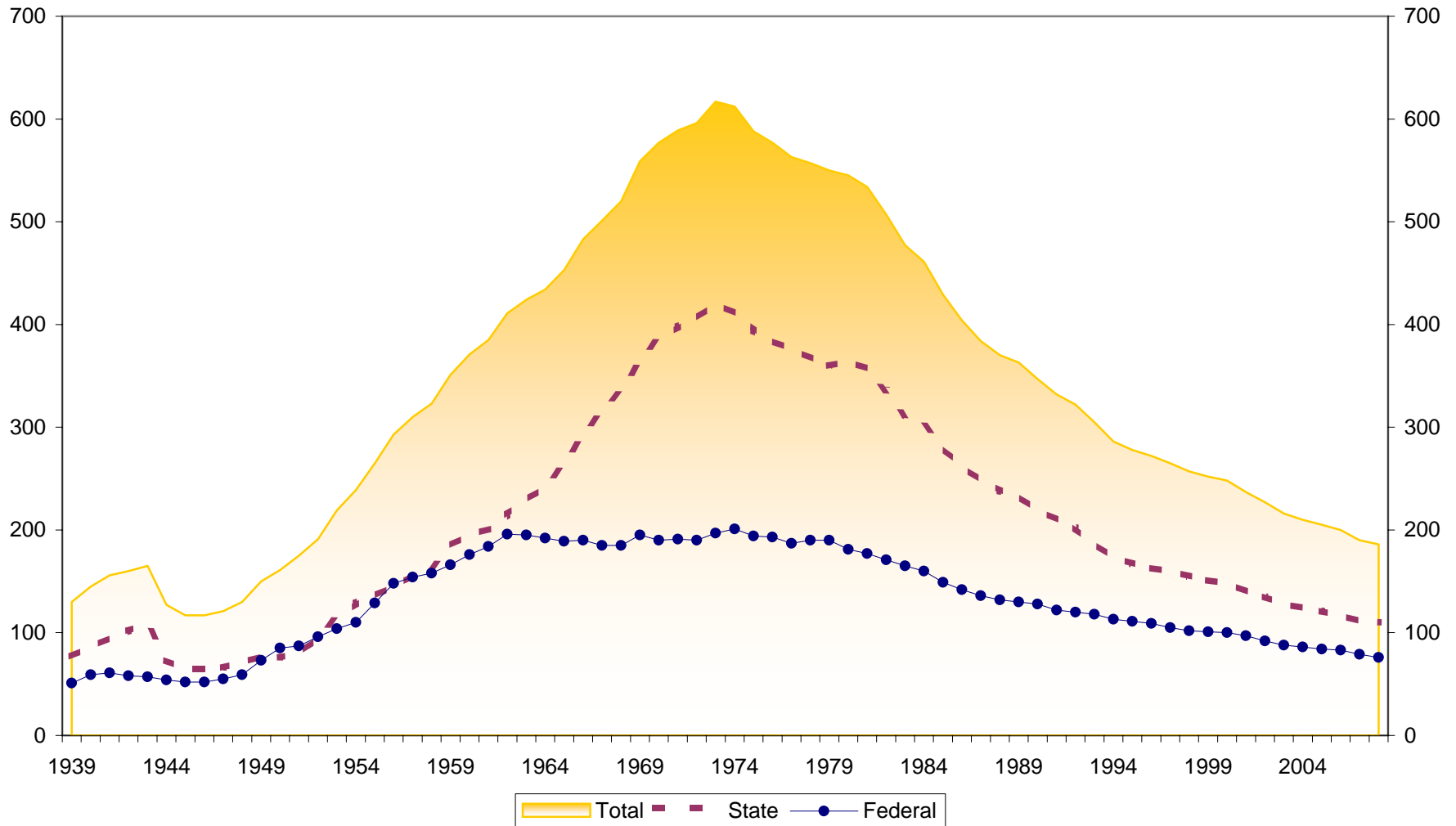
\* Beginning 1990, Reserves includes undivided earnings.

## Tennessee Federal Statistics

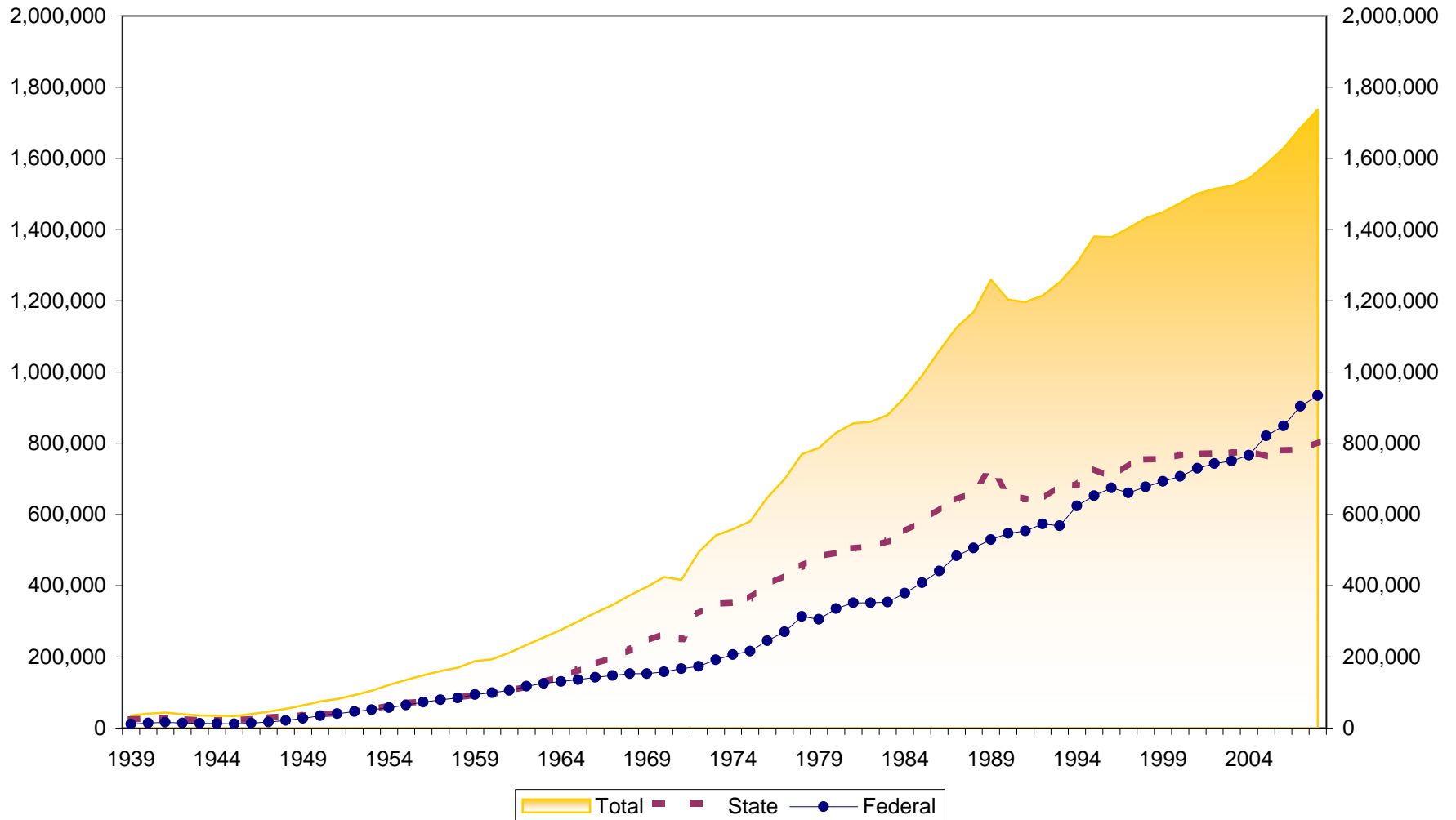
Year	# of CUs	# of Members	Savings (\$)	Loans (\$)	Reserves (\$)*	Assets (\$)
1939	51	10,938	390,000	352,000		433,000
1940	59	13,584	558,000	499,000		615,000
1941	61	16,154	779,000	592,000		857,000
1942	58	14,187	781,000	353,000		898,000
1943	57	13,101	854,000	300,000		960,000
1944	54	12,589	959,000	292,000		1,061,000
1945	52	11,812	1,133,000	341,000	49,580	1,227,000
1946	52	13,736	1,321,662	586,190	54,500	1,444,722
1947	55	17,226	1,771,604	967,570	64,714	1,916,690
1948	59	21,093	2,492,711	1,596,208	84,169	2,704,723
1949	73	26,968	3,457,332	2,391,241	112,422	3,772,897
1950	85	34,606	5,241,898	4,030,951	163,916	5,743,168
1951	87	40,278	7,205,695	5,057,725	229,917	7,859,278
1952	96	46,316	9,876,270	6,984,280	302,894	10,717,378
1953	104	51,577	12,545,774	9,331,076	396,154	13,654,037
1954	110	57,349	14,988,703	10,779,676	533,319	16,503,193
1955	129	64,664	18,417,129	13,559,248	669,841	20,442,273
1956	148	72,997	22,172,651	17,167,515	888,915	24,604,882
1957	154	79,096	26,577,426	21,299,542	1,158,733	29,682,001
1958	158	84,273	30,664,724	23,411,757	1,415,077	34,254,864
1959	166	94,016	36,578,647	28,820,225	1,926,318	41,278,305
1960	176	99,444	41,313,371	36,050,542	2,392,462	46,750,734
1961	184	105,584	47,858,337	38,973,470	2,878,594	53,997,704
1962	196	117,234	54,417,311	45,990,423	3,533,665	61,854,395
1963	195	125,220	62,524,236	51,843,286	4,292,897	71,187,056
1964	192	130,790	71,994,000	60,278,000	5,112,000	81,930,000
1965	189	135,650	82,174,000	68,583,000	6,028,000	93,543,000
1966	190	142,541	90,214,000	76,668,000	7,008,000	103,599,000
1967	185	147,336	98,914,000	81,859,000	7,943,000	114,311,000
1968	185	152,905	105,695,000	90,771,000	8,932,000	122,450,000
1969	195	152,428	113,330,000	97,946,000	9,797,000	131,140,000
1970	190	157,435	122,754,000	103,073,000	11,262,000	142,354,000
1971	191	166,438	149,054,000	119,205,000	12,065,000	172,205,000
1972	190	173,424	173,787,000	136,960,000	13,018,000	200,597,000
1973	197	191,404	201,986,000	161,058,000	14,247,000	238,886,000
1974	201	205,969	227,645,000	178,582,000	16,127,000	269,369,000
1975	194	215,696	278,648,000	201,830,000	17,680,000	327,064,000
1976	193	245,185	337,755,000	248,686,000	19,298,000	402,084,000
1977	187	270,108	420,071,000	312,627,000	22,135,000	501,460,000
1978	190	313,630	490,905,000	399,617,000	23,480,000	581,027,000
1979	190	305,446	528,575,000	427,146,000	24,945,000	607,753,000
1980	181	335,773	585,184,000	394,901,000	23,211,000	650,942,000
1981	177	351,328	624,068,000	390,584,000	23,082,000	686,221,000
1982	171	351,404	684,747,000	397,030,000	22,447,000	749,053,000
1983	165	353,412	817,000,000	508,100,000	25,922,000	898,800,000
1984	160	378,587	952,293,166	642,017,970	30,538,216	1,055,639,381
1985	149	408,134	1,171,629,044	774,550,927	36,636,825	1,297,034,220
1986	142	441,210	1,407,764,527	908,564,004	43,144,227	1,528,209,869
1987	136	483,442	1,527,084,929	1,027,082,725	48,385,891	1,667,971,156
1988	132	505,877	1,633,152,331	1,138,054,079	62,938,547	1,786,376,467
1989	130	529,302	1,702,961,339	1,213,577,866	63,794,912	1,867,021,629
1990	128	546,944	1,834,986,001	1,248,472,092	149,172,316	2,011,584,193
1991	122	553,467	1,975,944,586	1,269,751,388	167,936,647	2,166,411,054
1992	120	573,210	2,132,717,050	1,332,992,230	200,878,155	2,352,588,298
1993	118	568,065	2,288,124,873	1,523,092,725	238,084,245	2,548,176,764
1994	113	623,968	2,336,655,311	1,803,481,618	269,596,274	2,638,855,054
1995	111	652,414	2,502,414,393	1,909,851,244	309,294,971	2,841,048,236
1996	109	674,285	2,593,847,034	2,061,003,059	341,050,528	2,970,842,084
1997	105	660,657	2,647,815,839	2,108,040,558	371,672,932	3,056,312,356
1998	102	677,185	2,864,085,425	2,187,117,341	403,261,126	3,302,547,250
1999	101	692,845	2,992,313,027	2,343,937,934	429,794,726	3,458,739,334
2000	100	706,825	3,139,453,350	2,495,792,312	472,328,894	3,650,150,726
2001	97	729,751	3,590,249,090	2,555,523,321	511,243,990	4,143,906,636
2002	92	742,696	3,792,282,294	2,616,556,393	554,521,248	4,410,999,720
2003	88	750,182	4,089,471,995	2,779,195,365	597,038,938	4,761,337,530
2004	86	766,231	4,251,620,923	2,973,615,130	635,391,164	4,961,330,551
2005	84	820,831	4,616,452,090	3,491,393,338	710,985,403	5,428,010,298
2006	83	848,419	4,930,117,040	3,804,349,061	770,343,063	5,797,994,511
2007	79	903,457	5,296,457,090	4,173,747,519	829,312,112	6,230,471,095
2008	76	933,609	5,735,000,381	4,540,816,325	874,356,085	6,735,900,162

\* Beginning 1990, Reserves includes undivided earnings.

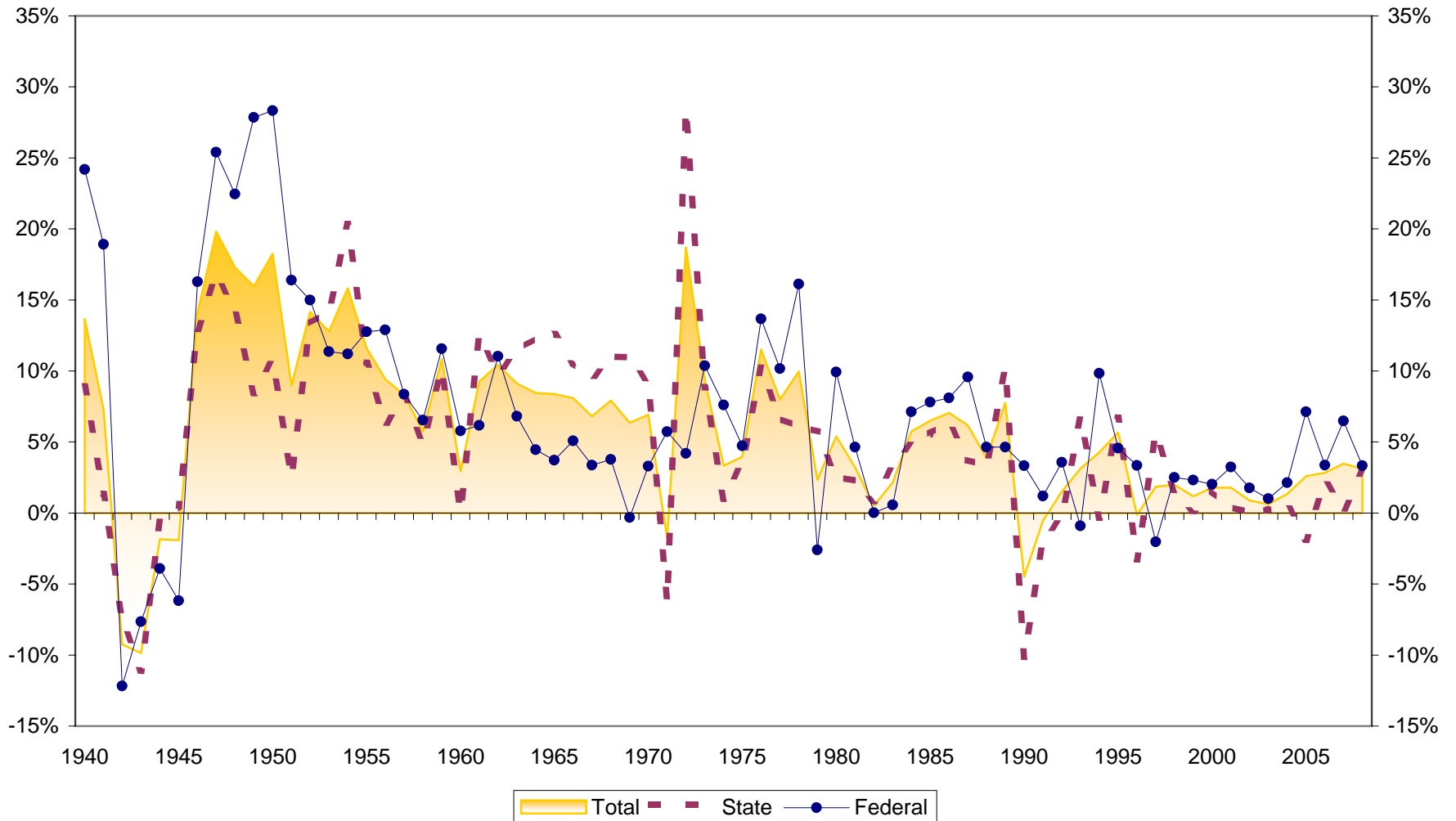
# Number of Tennessee Credit Unions 1939-2008



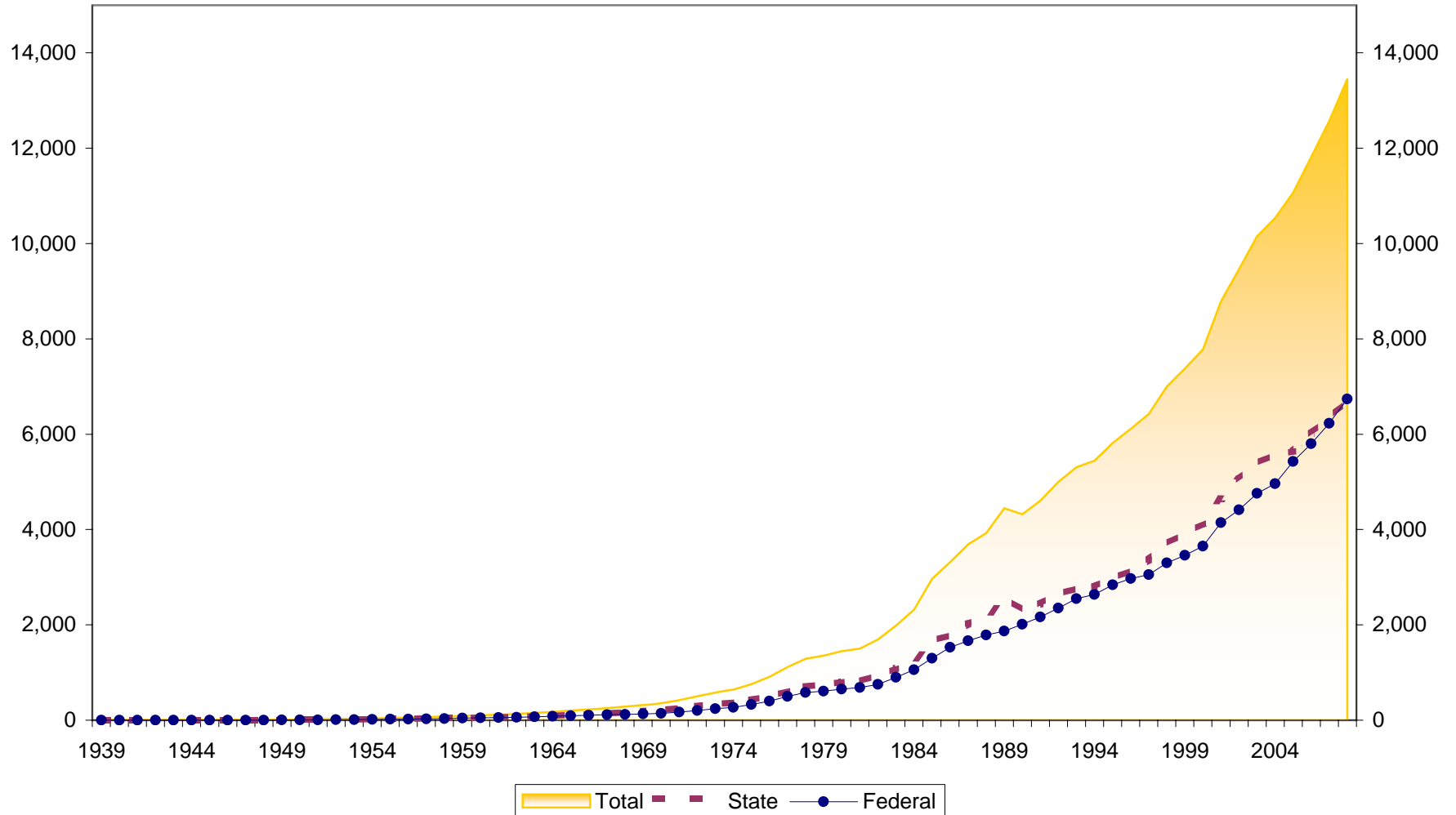
# Number of Members at Tennessee Credit Unions 1939-2008



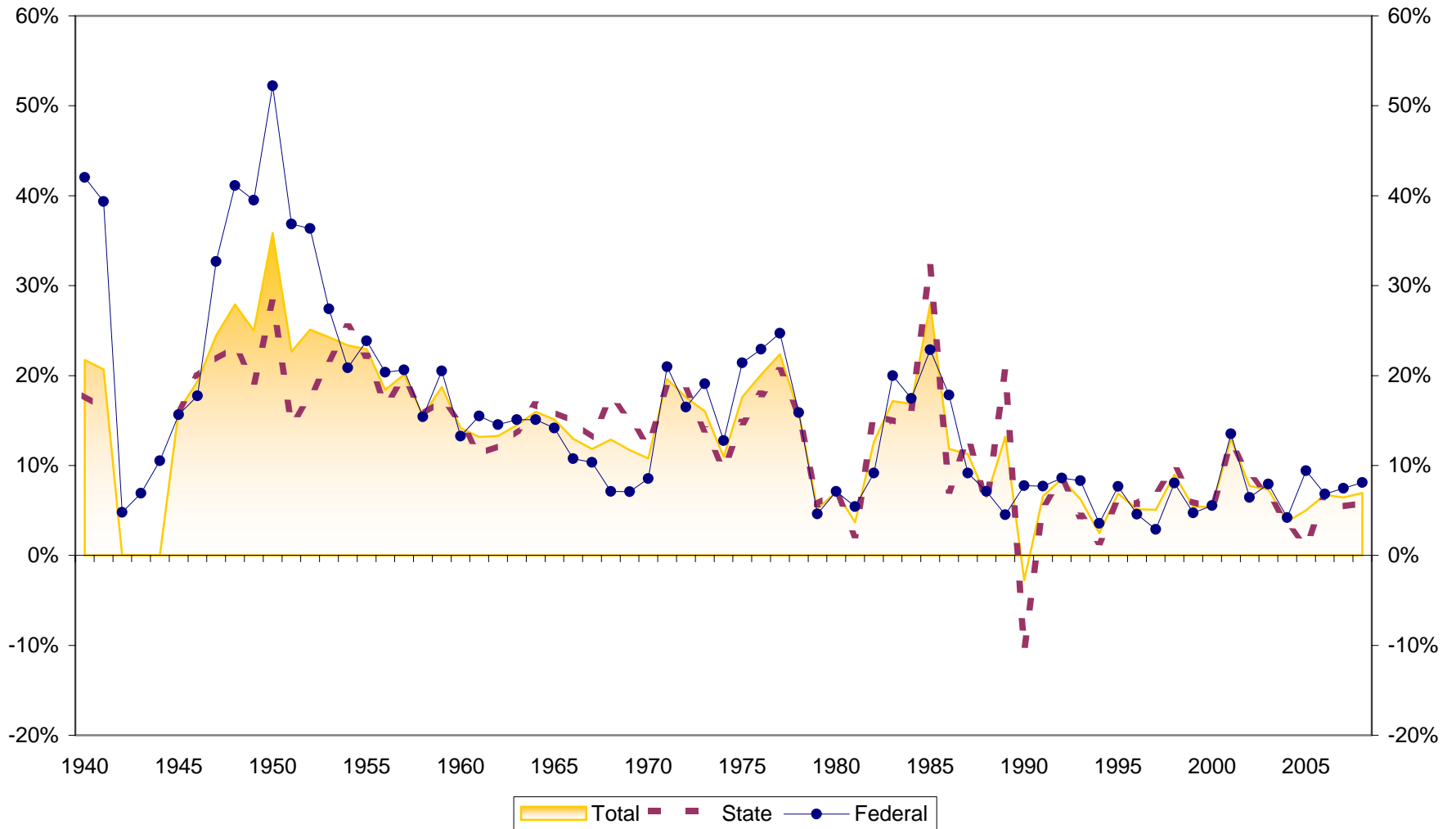
# Membership Growth at Tennessee Credit Unions 1940-2008



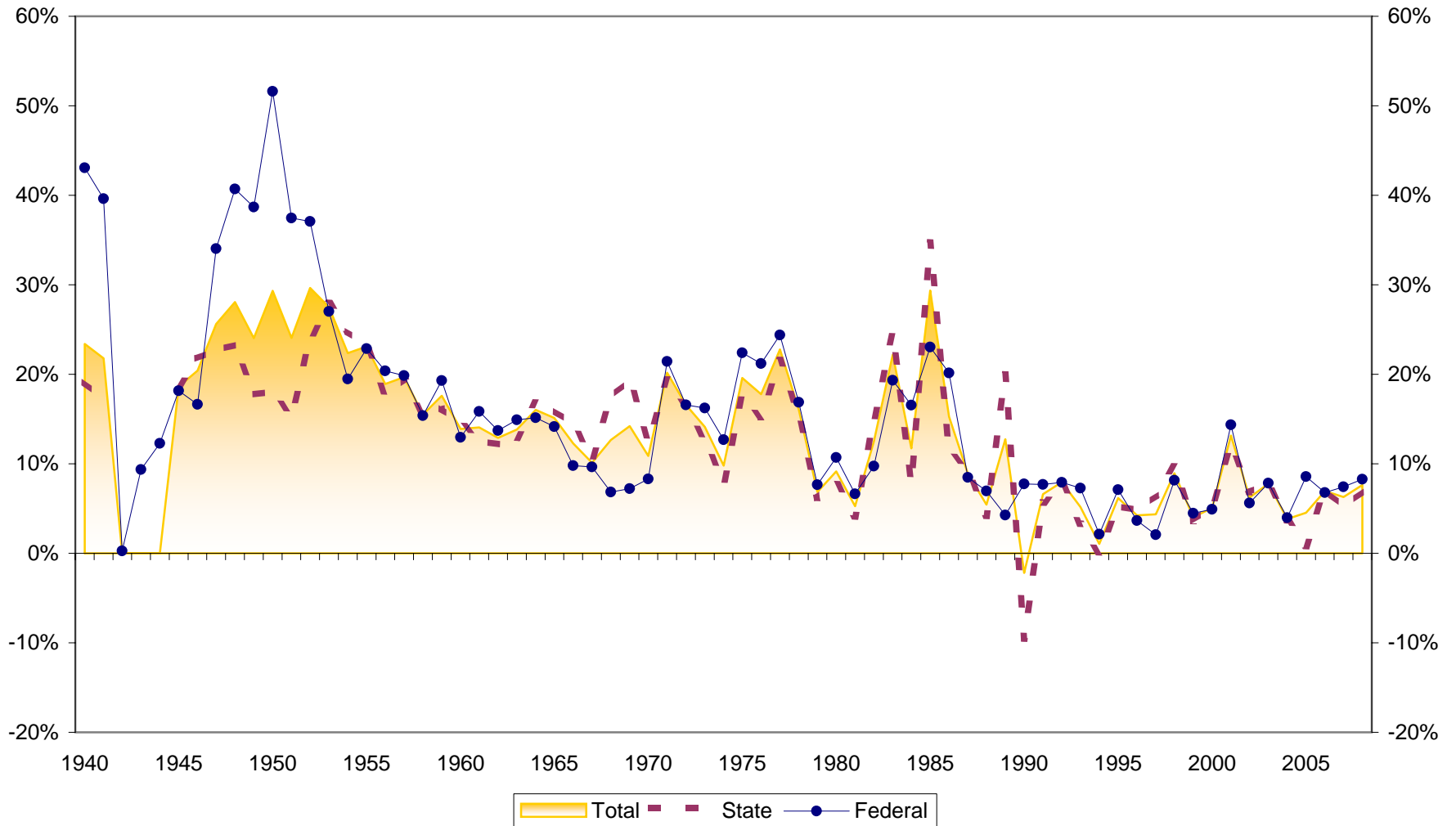
# Assets at Tennessee Credit Unions (in \$Millions) 1939-2008



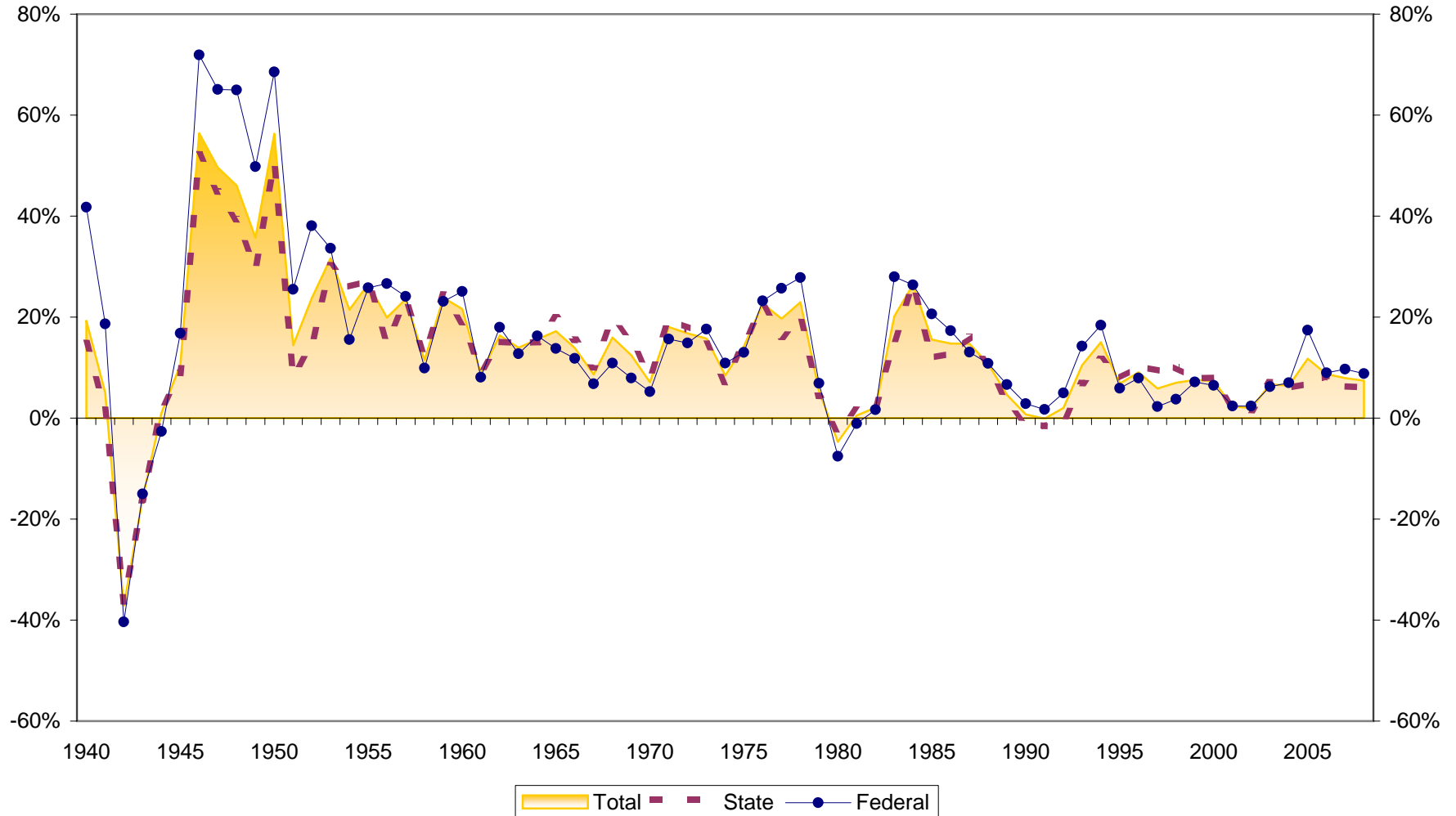
# Asset Growth at Tennessee Credit Unions 1940-2008



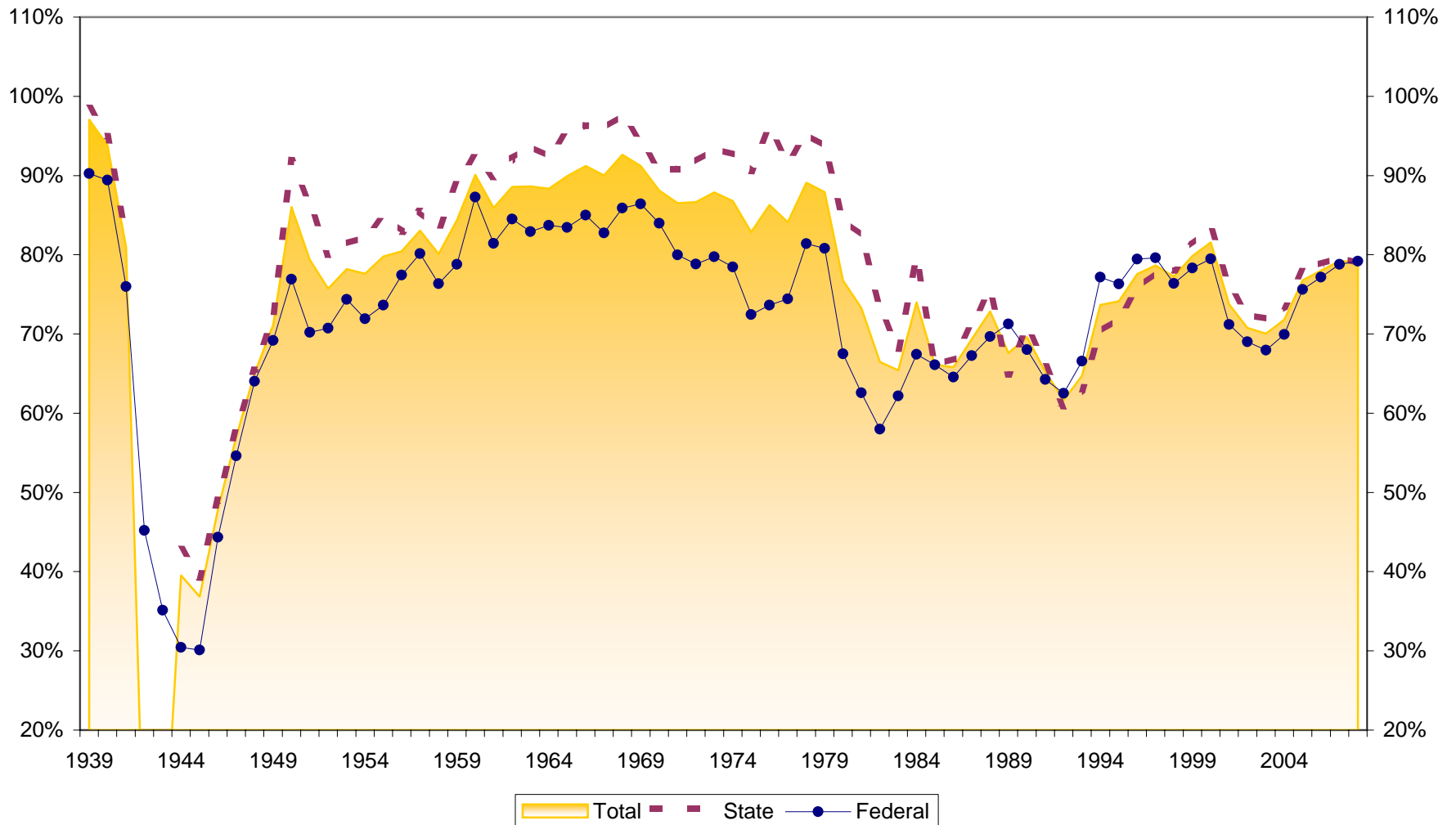
# Savings Growth at Tennessee Credit Unions 1940-2008



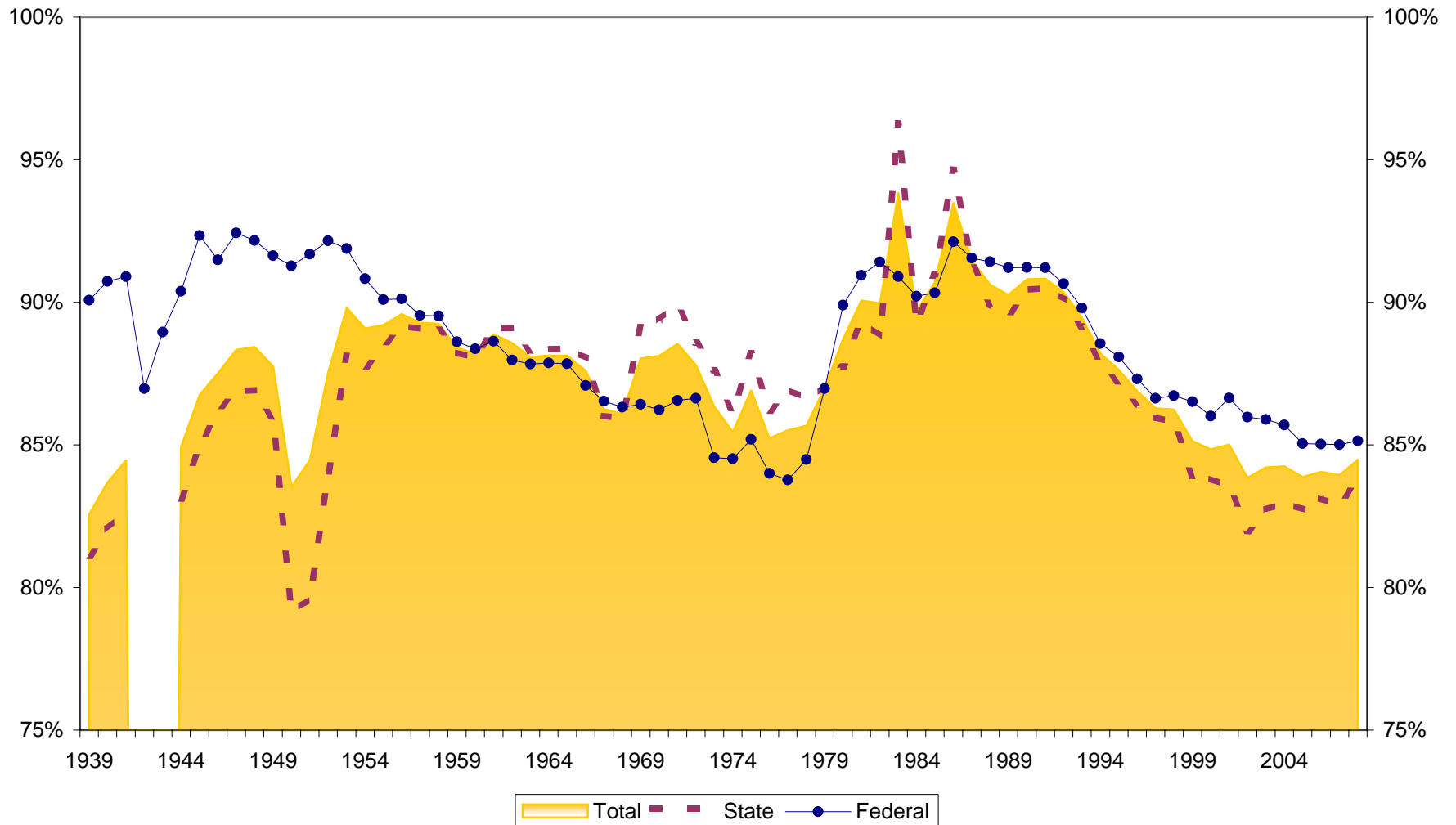
# Loan Growth at Tennessee Credit Unions 1940-2008



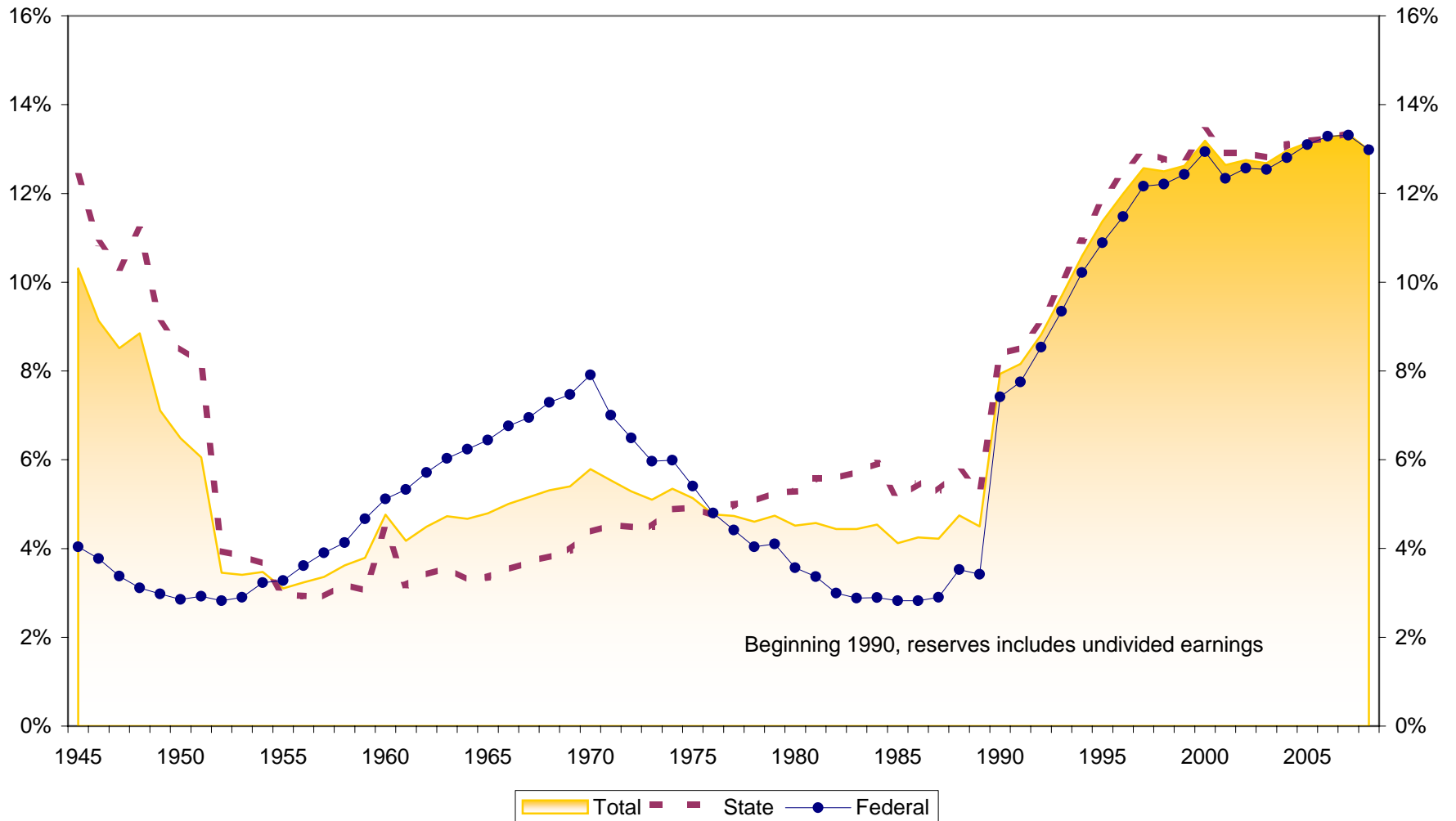
# Loans to Savings Ratio at Tennessee Credit Unions 1939-2008



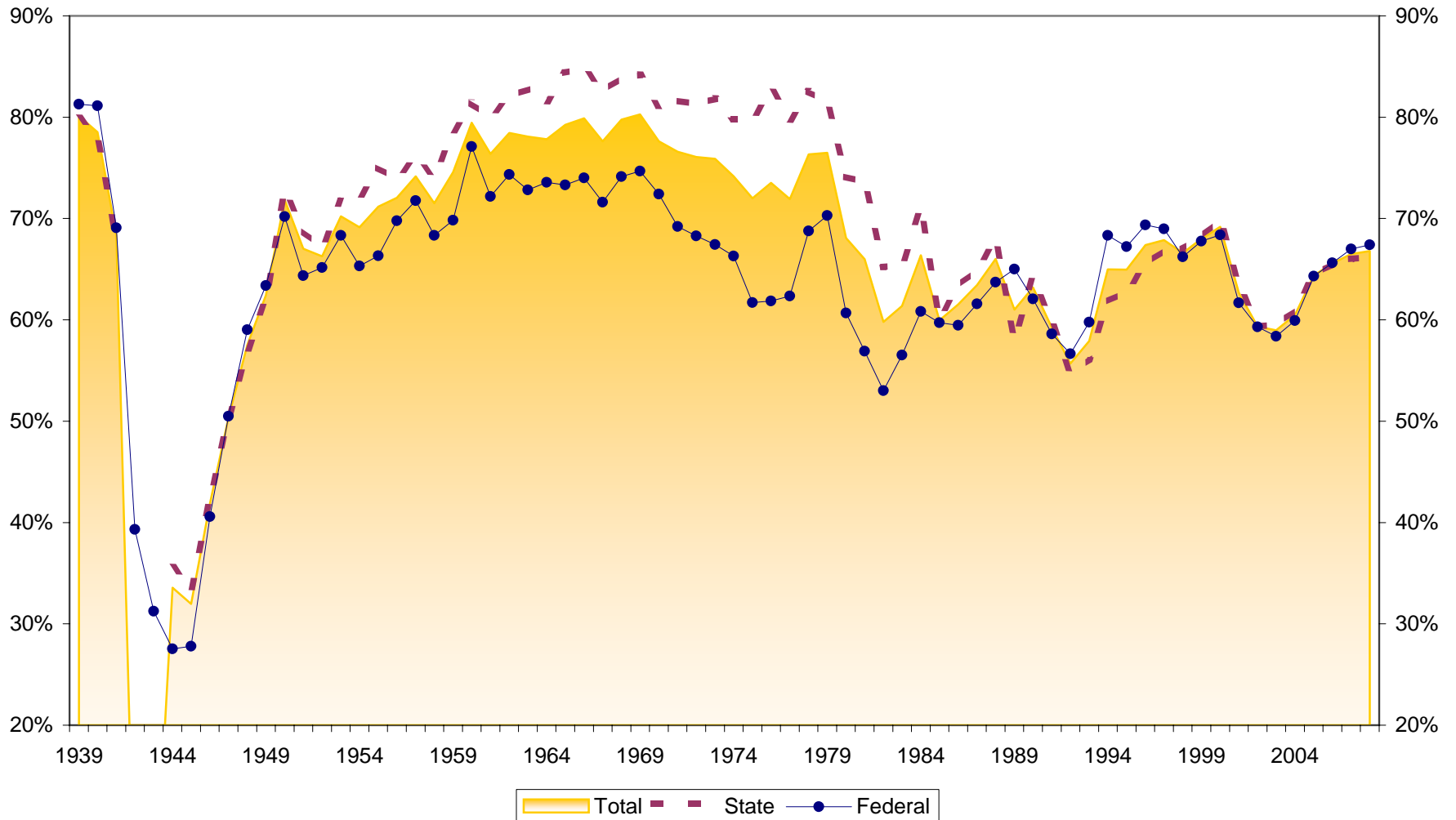
# Savings to Assets at Tennessee Credit Unions 1939-2008



# Reserves to Assets at Tennessee Credit Unions 1945-2008



# Loans to Assets at Tennessee Credit Unions 1939-2008



## Dollar Asset Growth at Tennessee Credit Unions (in \$Millions) 1940-2008

