

Puerto Rico Totals Statistics

Year	# of CUs	# of Members	Savings (\$)	Loans (\$)	Reserves (\$)*	Assets (\$)
1939						
1940						
1941						
1942						
1943						
1944						
1945						
1946						
1947						
1948						
1949	40	6,730	324,937	314,786	11,351	379,625
1950	57	9,449	674,431	709,792	16,386	847,269
1951	70	19,464	1,166,498	1,219,771	21,836	1,361,408
1952	86	25,560	1,955,682	2,204,684	36,631	2,478,177
1953	98	31,865	3,008,926	3,244,372	67,316	3,706,506
1954	100	40,230	4,551,074	4,923,930	101,450	5,574,724
1955	132	45,366	5,711,278	6,556,047	157,032	6,960,754
1956	152	53,395	8,010,991	8,866,024	386,147	9,877,190
1957	182	61,793	9,886,983	11,150,825	410,665	12,563,897
1958	198	71,364	12,709,340	14,123,089	443,811	15,946,092
1959	213	79,345	16,312,760	16,809,873	499,081	19,074,082
1960	233	83,316	19,532,771	20,040,302	614,243	22,130,496
1961	257	94,658	21,215,972	25,117,433	982,312	27,876,092
1962	294	103,516	24,669,905	27,128,640	917,066	30,819,020
1963	317	113,803	32,792,374	33,444,664	1,294,469	38,049,702
1964	354	117,175	39,383,817	40,573,888	1,490,921	46,231,627
1965	367	121,781	46,423,847	48,314,766	2,344,108	54,866,810
1966	390	131,983	55,611,000	58,195,000	2,834,990	65,827,000
1967	373	132,566	65,100,209	66,461,051	3,551,164	77,196,663
1968	420	160,673	78,513,000	78,731,000	3,637,000	89,198,000
1969	476	172,452	97,482,000	103,343,000	5,087,000	117,346,000
1970	485	199,405	119,611,000	125,454,000	5,867,000	142,268,000
1971	457	217,375	139,967,055	147,286,906	6,851,026	166,725,927
1972	445	234,033	169,037,178	178,799,707	8,208,107	201,727,541
1973	440	247,640	194,124,583	208,686,823	9,610,021	234,490,021
1974	438	266,356	222,009,228	231,914,816	10,437,464	262,666,987
1975	381	277,388	255,798,547	248,573,175	10,697,692	298,411,790
1976	417	287,962	304,848,000	296,808,000	12,091,000	352,284,000
1977	404	312,172	354,287,000	341,885,000	12,913,000	404,552,000
1978	406	345,551	402,093,000	381,388,000	15,055,000	453,106,000
1979	384	380,920	467,738,378	445,137,332	17,054,390	526,716,050
1980	376	414,028	538,292,450	511,161,227	19,321,904	608,834,950
1981	350	479,878	602,386,457	567,307,335	22,710,571	689,122,279
1982	351	465,413	663,266,437	599,051,166	25,615,194	754,009,891
1983	328	480,732	730,204,778	609,337,424	27,006,686	820,087,272
1984	306	491,548	818,800,610	668,580,422	28,981,863	922,842,811
1985	297	537,162	948,670,296	778,525,359	31,094,084	1,074,260,964
1986	291	559,310	1,134,756,521	919,627,127	34,349,189	1,266,668,864
1987	288	608,995	1,381,816,805	1,095,250,568	39,522,133	1,550,475,707
1988	279	651,265	1,629,333,118	1,331,898,474	53,115,546	1,913,872,729
1989	276	697,592	1,829,115,035	1,519,276,528	56,371,737	2,173,591,294
1990	270	736,556	2,093,293,118	1,642,681,880	77,594,484	2,250,311,398
1991	273	725,545	2,324,631,403	1,737,700,977	67,251,137	2,464,866,316
1992	267	779,339	2,634,163,356	1,868,197,601	74,328,435	2,760,337,099
1993	261	805,704	2,965,640,843	1,999,989,521	82,514,449	3,113,072,290
1994	239	834,259	3,157,878,893	2,216,417,712	96,491,004	3,338,365,954
1995	224	844,862	3,342,621,314	2,383,643,616	103,591,945	3,514,195,255
1996	210	904,720	3,632,004,446	2,642,000,843	123,943,387	3,835,147,268
1997	201	932,286	3,924,671,217	2,963,363,600	166,254,778	4,187,061,338
1998	190	962,558	4,478,865,160	3,090,152,389	185,254,352	4,739,092,826
1999	177	940,607	4,509,237,000	3,267,684,000	186,293,000	4,809,809,000
2000	171	944,342	4,606,126,858	3,440,389,812	223,045,755	4,933,970,545
2001	172	939,393	5,160,804,000	3,577,513,000	261,170,000	5,497,352,000
2002	166	948,110	5,594,515,730	3,723,710,226	297,605,134	5,971,854,784
2003	164	941,322	6,134,425,000	3,844,395,000	339,008,000	6,559,589,000
2004	160	937,016	6,404,893,000	3,992,034,000	378,296,000	6,870,387,000
2005	157	932,368	6,331,619,000	4,181,847,000	400,214,797	6,840,278,000
2006	149	921,428	6,240,849,000	4,377,622,000	428,108,000	6,795,609,000
2007	148	916,449	6,466,334,000	4,520,233,000	449,305,000	7,019,245,000
2008	140	911,317	6,679,743,000	4,633,930,000	463,260,000	7,266,187,000

* Beginning 1990, Reserves includes undivided earnings.

Puerto Rico State Statistics

Year	# of CUs	# of Members	Savings (\$)	Loans (\$)	Reserves (\$)*	Assets (\$)
1939						
1940						
1941						
1942						
1943						
1944						
1945						
1946						
1947						
1948						
1949	40	6,730	324,937	314,786	11,351	379,625
1950	51	8,616	631,371	668,099	15,939	799,743
1951	59	16,666	972,926	1,019,057	19,062	1,148,662
1952	72	20,170	1,535,685	1,787,606	28,222	2,007,060
1953	82	25,908	2,320,431	2,555,828	50,846	2,931,470
1954	85	33,181	3,423,157	3,861,774	71,323	4,347,765
1955	109	37,455	4,279,000	5,110,800	113,600	5,360,000
1956	126	44,600	6,169,000	7,120,265	325,200	7,791,500
1957	158	52,000	7,951,464	9,007,821	338,484	10,034,976
1958	173	58,300	9,867,047	11,559,000	317,487	12,766,000
1959	183	65,354	13,024,872	13,765,976	338,024	15,303,521
1960	199	68,450	16,047,367	16,410,006	428,935	17,900,000
1961	222	78,075	16,846,925	20,700,000	733,114	22,750,000
1962	255	85,500	19,300,000	21,860,000	598,900	24,570,000
1963	275	94,206	26,423,786	27,422,498	891,132	30,714,236
1964	316	97,282	31,908,817	33,393,888	1,016,921	37,667,627
1965	329	101,100	37,598,847	39,723,766	1,727,108	44,738,810
1966	351	110,000	45,932,000	48,522,000	2,089,990	54,654,000
1967	333	109,175	54,126,209	55,524,051	2,624,164	64,528,663
1968	380	135,867	65,900,000	66,200,000	2,500,000	74,600,000
1969	436	146,366	83,253,000	89,198,000	3,790,000	100,687,000
1970	448	172,785	103,045,000	109,289,000	4,384,000	122,934,000
1971	420	192,154	120,935,055	128,518,906	5,229,026	144,529,927
1972	409	206,756	145,800,178	156,594,707	6,270,107	174,992,541
1973	404	220,135	168,243,583	184,126,823	7,346,021	204,369,021
1974	401	236,478	191,497,228	203,077,816	7,856,464	227,674,987
1975	347	248,003	221,583,842	219,018,087	8,027,692	259,587,096
1976	381	257,222	264,654,000	261,818,000	9,123,000	306,903,000
1977	369	280,807	305,793,000	300,580,000	9,838,000	350,457,000
1978	371	306,303	345,545,000	331,673,000	11,988,000	390,338,000
1979	347	344,330	406,514,378	390,418,332	13,857,390	458,521,050
1980	340	378,953	473,397,450	452,887,227	15,963,904	536,499,950
1981	315	444,000	533,241,457	504,265,335	19,027,571	611,307,279
1982	315	428,360	587,019,437	534,931,166	21,687,194	669,319,891
1983	292	443,750	646,980,778	542,799,424	22,910,686	728,127,272
1984	273	454,421	729,024,437	598,937,807	24,681,863	822,326,228
1985	264	499,421	843,764,038	702,994,327	26,276,171	956,734,407
1986	259	519,765	1,008,845,631	831,377,563	28,000,000	1,125,598,563
1987	256	567,022	1,237,658,453	988,456,917	32,105,417	1,388,806,656
1988	247	609,183	1,476,102,186	1,215,527,930	39,878,868	1,741,398,394
1989	243	652,434	1,674,305,822	1,401,068,430	42,556,641	1,997,190,817
1990	233	681,589	1,921,686,570	1,516,100,483	55,604,508	2,053,963,560
1991	237	667,863	2,133,742,745	1,603,210,117	43,363,223	2,247,194,161
1992	232	717,798	2,425,713,293	1,711,724,638	47,574,763	2,522,404,077
1993	227	742,443	2,734,422,932	1,831,754,418	53,571,584	2,850,260,497
1994	208	771,471	2,934,988,279	2,045,717,113	62,567,394	3,079,016,459
1995	195	780,162	3,096,155,907	2,191,016,791	65,909,898	3,227,291,818
1996	185	837,254	3,355,621,272	2,427,993,455	81,751,258	3,513,097,627
1997	176	861,369	3,627,910,155	2,726,204,099	118,530,310	3,839,115,121
1998	167	889,739	4,155,792,487	2,837,202,644	134,195,335	4,360,599,118
1999	154	862,787	4,154,153,384	3,008,177,282	131,876,278	4,395,878,463
2000	148	866,599	4,233,499,777	3,161,494,992	164,406,666	4,496,264,206
2001	149	858,367	4,742,079,780	3,276,704,475	198,009,765	5,010,730,984
2002	143	863,644	5,135,336,246	3,407,332,672	228,017,158	5,438,980,745
2003	141	852,752	5,635,734,607	3,528,149,941	265,128,206	5,982,966,175
2004	137	845,769	5,895,505,015	3,683,149,827	298,899,434	6,277,785,274
2005	134	842,799	5,814,729,364	3,874,631,129	319,951,334	6,238,912,587
2006	130	836,209	5,820,880,883	4,086,772,120	345,819,309	6,289,582,438
2007	129	827,135	6,029,418,460	4,187,757,728	363,807,684	6,488,777,807
2008	122	821,649	6,206,075,109	4,286,458,377	374,596,966	6,699,078,421

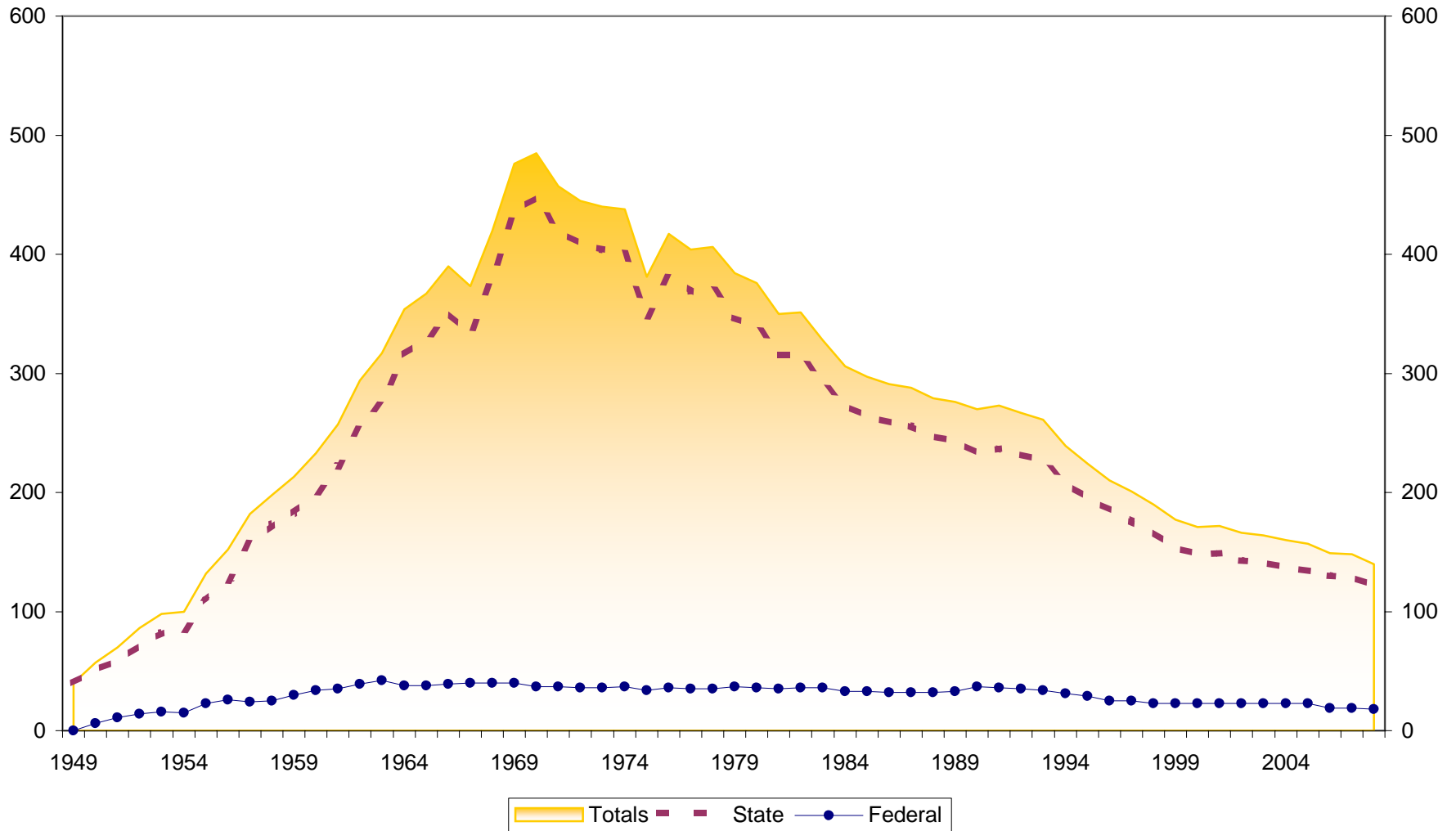
* Beginning 1990, Reserves includes undivided earnings.

Puerto Rico Federal Statistics

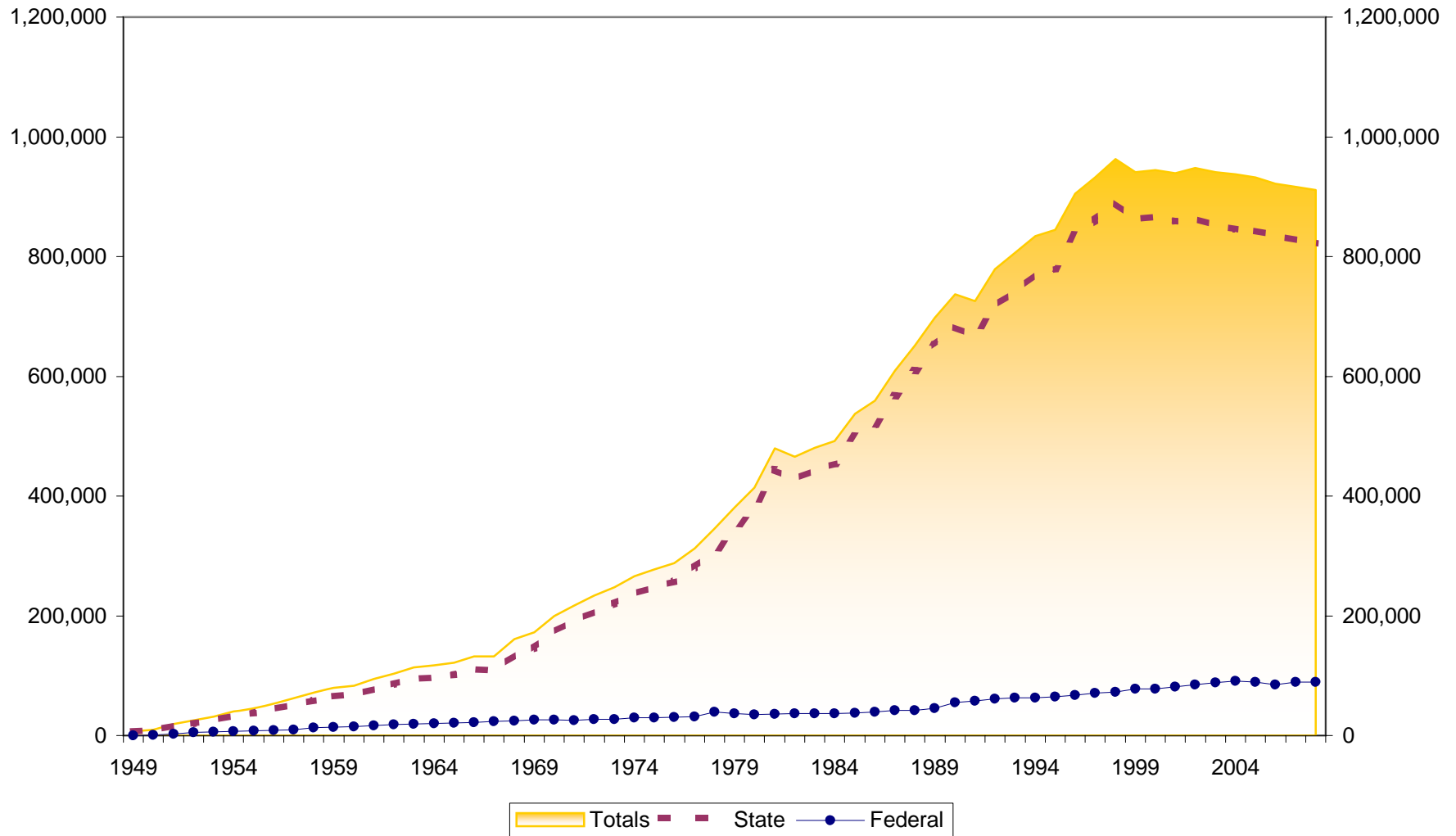
Year	# of CUs	# of Members	Savings (\$)	Loans (\$)	Reserves (\$)*	Assets (\$)
1939						
1940						
1941						
1942						
1943						
1944						
1945						
1946						
1947						
1948						
1949						
1950	6	833	43,060	41,693	447	47,526
1951	11	2,798	193,572	200,714	2,774	212,746
1952	14	5,390	419,997	417,078	8,409	471,117
1953	16	5,957	688,495	688,544	16,470	775,036
1954	15	7,049	1,127,917	1,062,156	30,127	1,226,959
1955	23	7,911	1,432,278	1,445,247	43,432	1,600,754
1956	26	8,795	1,841,991	1,745,759	60,947	2,085,690
1957	24	9,793	1,935,519	2,143,004	72,181	2,528,921
1958	25	13,064	2,842,293	2,564,089	126,324	3,180,092
1959	30	13,991	3,287,888	3,043,897	161,057	3,770,561
1960	34	14,866	3,485,404	3,630,296	185,308	4,230,496
1961	35	16,583	4,369,047	4,417,433	249,198	5,126,092
1962	39	18,016	5,369,905	5,268,640	318,166	6,249,020
1963	42	19,597	6,368,588	6,022,166	403,337	7,335,466
1964	38	19,893	7,475,000	7,180,000	474,000	8,564,000
1965	38	20,681	8,825,000	8,591,000	617,000	10,128,000
1966	39	21,983	9,679,000	9,673,000	745,000	11,173,000
1967	40	23,391	10,974,000	10,937,000	927,000	12,668,000
1968	40	24,806	12,613,000	12,531,000	1,137,000	14,598,000
1969	40	26,086	14,229,000	14,145,000	1,297,000	16,659,000
1970	37	26,620	16,566,000	16,165,000	1,483,000	19,334,000
1971	37	25,221	19,032,000	18,768,000	1,622,000	22,196,000
1972	36	27,277	23,237,000	22,205,000	1,938,000	26,735,000
1973	36	27,505	25,881,000	24,560,000	2,264,000	30,121,000
1974	37	29,878	30,512,000	28,837,000	2,581,000	34,992,000
1975	34	29,385	34,214,705	29,555,088	2,670,000	38,824,694
1976	36	30,740	40,194,000	34,990,000	2,968,000	45,381,000
1977	35	31,365	48,494,000	41,305,000	3,075,000	54,095,000
1978	35	39,248	56,548,000	49,715,000	3,067,000	62,768,000
1979	37	36,590	61,224,000	54,719,000	3,197,000	68,195,000
1980	36	35,075	64,895,000	58,274,000	3,358,000	72,335,000
1981	35	35,878	69,145,000	63,042,000	3,683,000	77,815,000
1982	36	37,053	76,247,000	64,120,000	3,928,000	84,690,000
1983	36	36,982	83,224,000	66,538,000	4,096,000	91,960,000
1984	33	37,127	89,776,173	69,642,615	4,300,000	100,516,583
1985	33	37,741	104,906,258	75,531,032	4,817,913	117,526,557
1986	32	39,545	125,910,890	88,249,564	6,349,189	141,070,301
1987	32	41,973	144,158,352	106,793,651	7,416,716	161,669,051
1988	32	42,082	153,230,932	116,370,544	13,236,678	172,474,335
1989	33	45,158	154,809,213	118,208,098	13,815,096	176,400,477
1990	37	54,967	171,606,548	126,581,397	21,989,976	196,347,838
1991	36	57,682	190,888,658	134,490,860	23,887,914	217,672,155
1992	35	61,541	208,450,063	156,472,963	26,753,672	237,933,022
1993	34	63,261	231,217,911	168,235,103	28,942,865	262,811,793
1994	31	62,788	222,890,614	170,700,599	33,923,610	259,349,495
1995	29	64,700	246,465,407	192,626,825	37,682,047	286,903,437
1996	25	67,466	276,383,174	214,007,388	42,192,129	322,049,641
1997	25	70,917	296,761,062	237,159,501	47,724,468	347,946,217
1998	23	72,819	323,072,673	252,949,745	51,059,017	378,493,708
1999	23	77,820	355,083,616	259,506,718	54,416,722	413,930,537
2000	23	77,743	372,627,081	278,894,820	58,639,089	437,706,339
2001	23	81,026	418,724,220	300,808,525	63,160,235	486,621,016
2002	23	84,466	459,179,484	316,377,554	69,587,976	532,874,039
2003	23	88,570	498,690,393	316,245,059	73,879,794	576,622,825
2004	23	91,247	509,387,985	308,884,173	79,396,566	592,601,726
2005	23	89,569	516,889,636	307,215,871	80,263,463	601,365,413
2006	19	85,219	419,968,117	290,849,880	82,288,691	506,026,562
2007	19	89,314	436,915,540	332,475,272	85,497,316	530,467,193
2008	18	89,668	473,667,891	347,471,623	88,663,034	567,108,579

* Beginning 1990, Reserves includes undivided earnings.

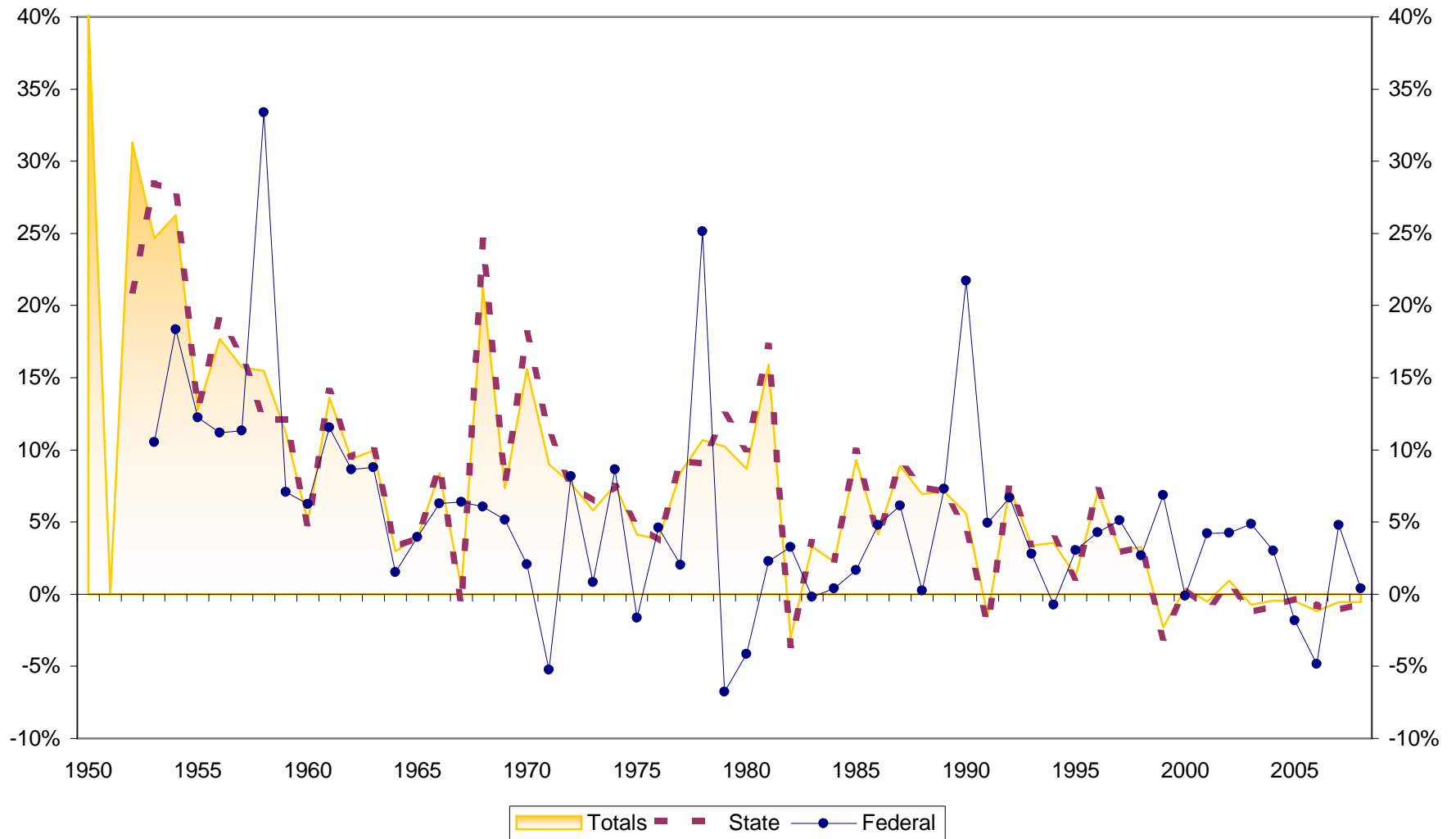
Number of Puerto Rico Credit Unions 1949-2008



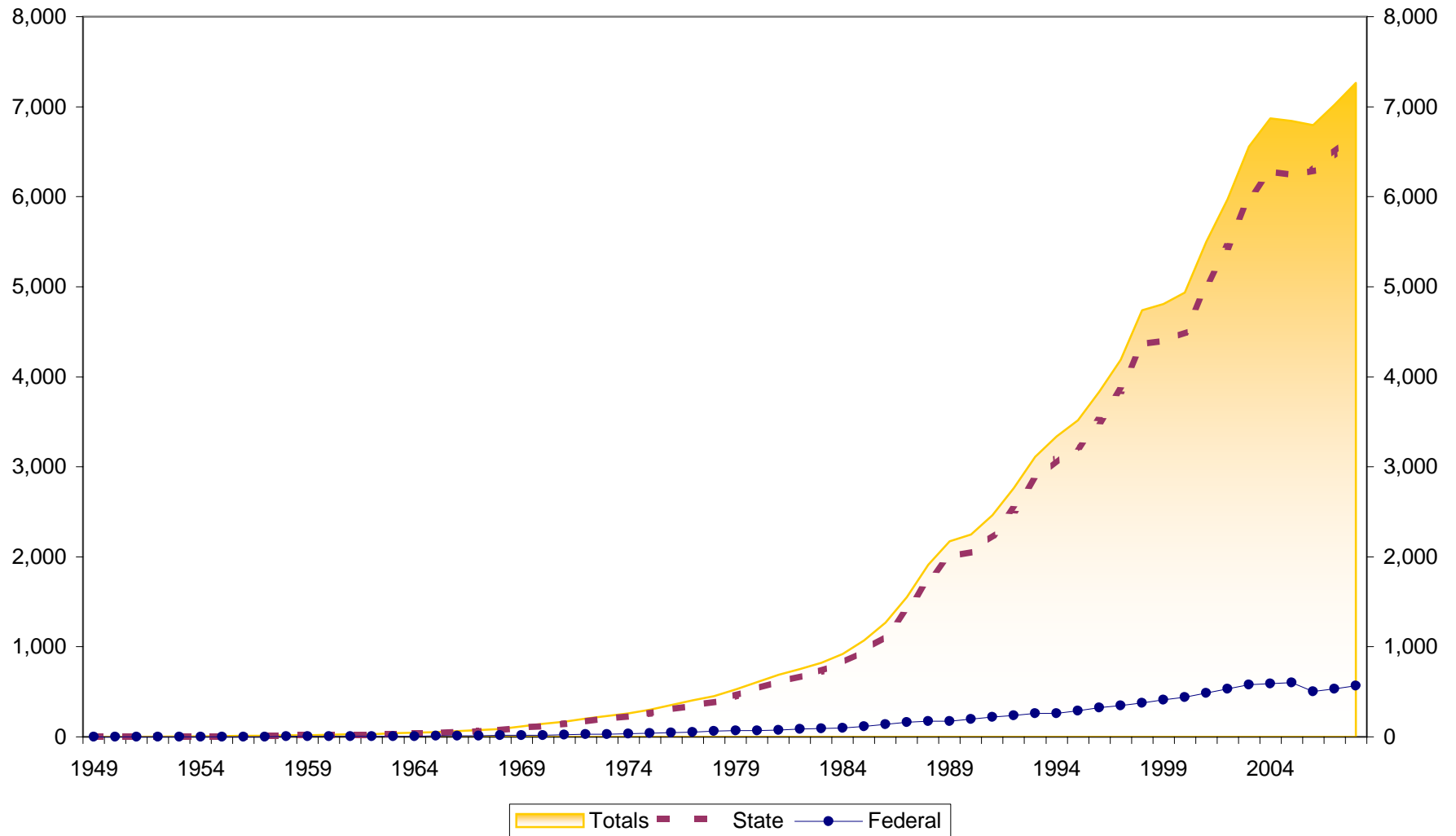
Number of Members at Puerto Rico Credit Unions 1949-2008



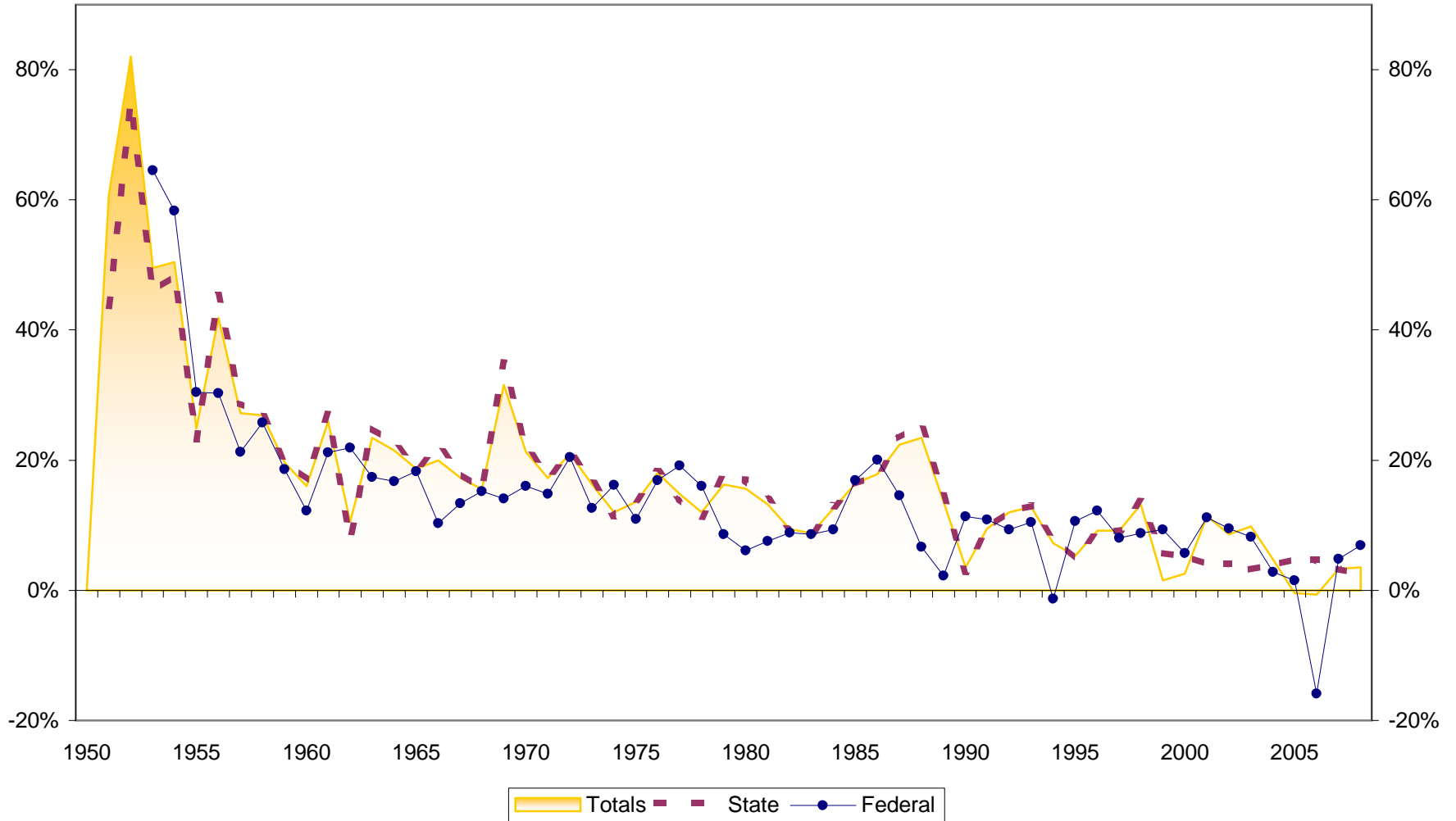
Membership Growth at Puerto Rico Credit Unions 1950-2008



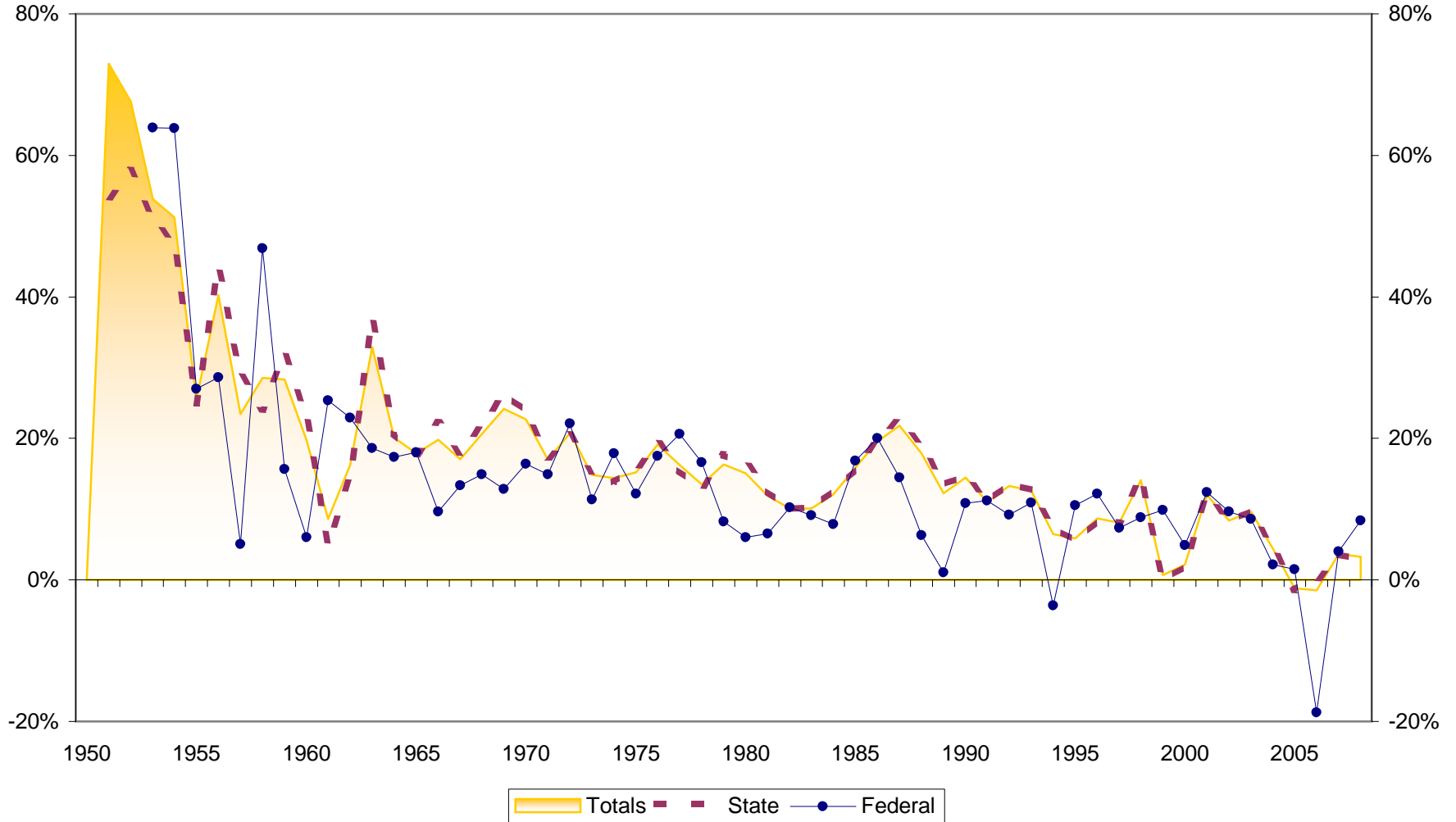
Assets at Puerto Rico Credit Unions (in \$Millions) 1949-2008



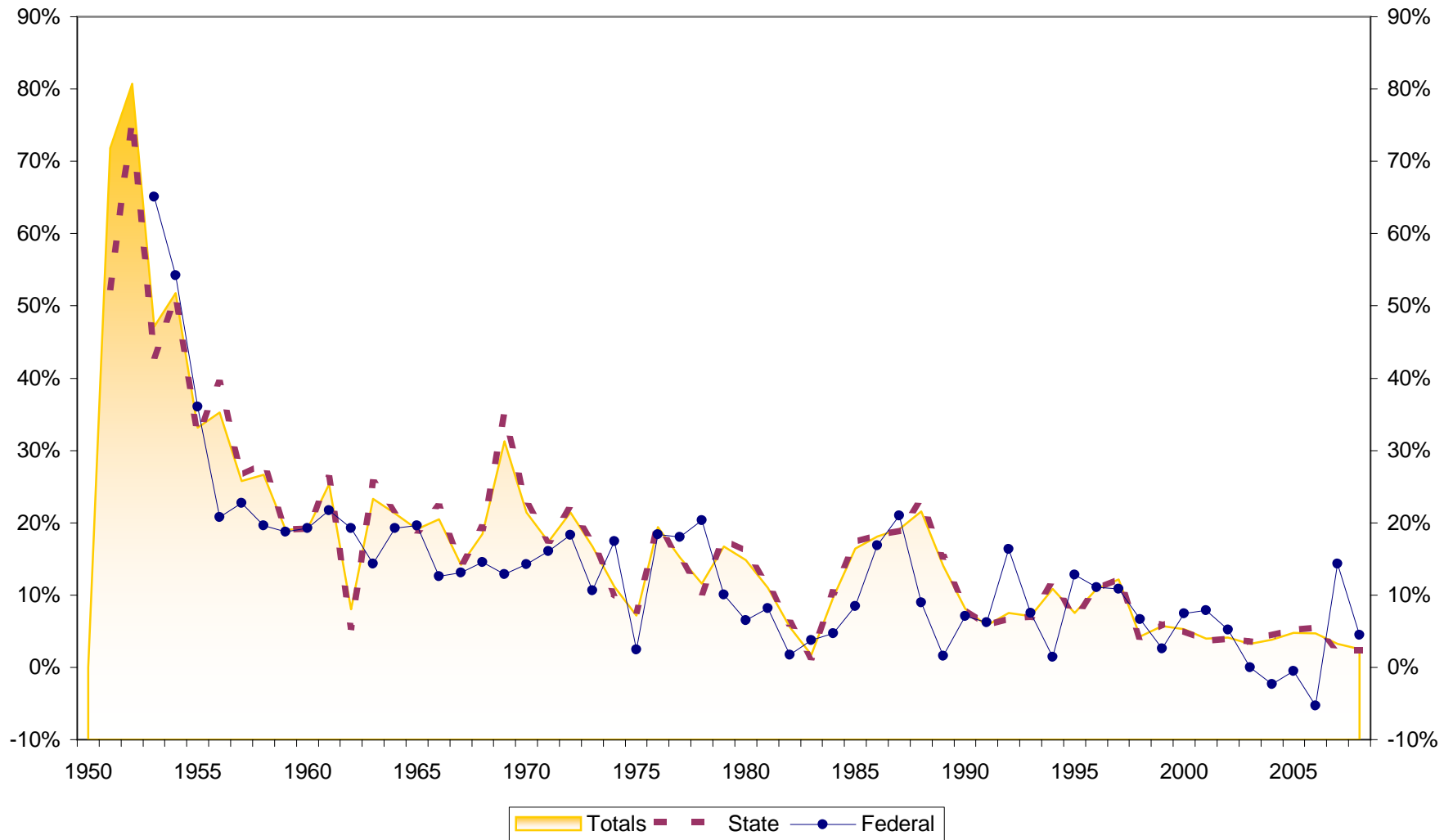
Asset Growth at Puerto Rico Credit Unions 1950-2008



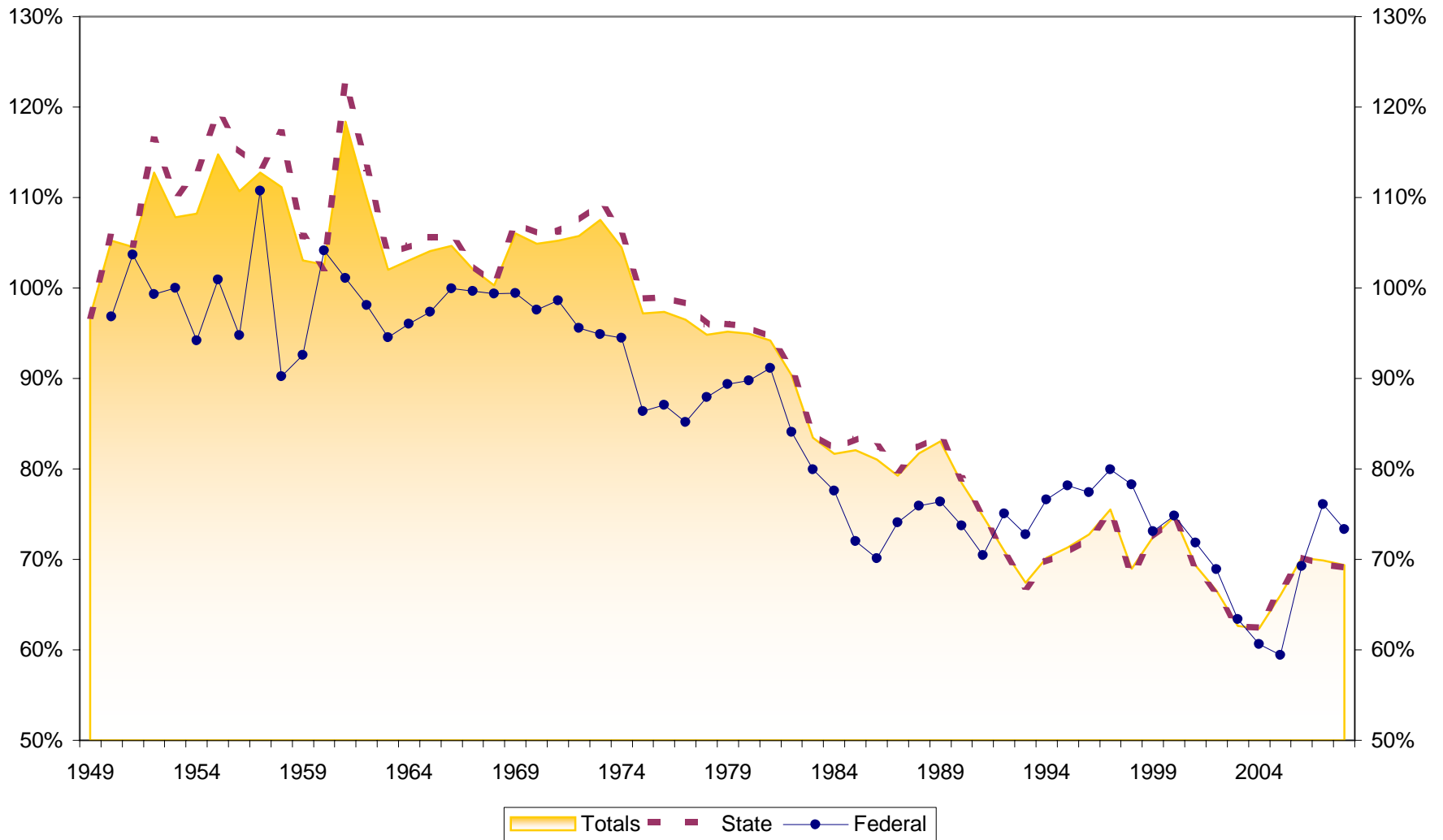
Savings Growth at Puerto Rico Credit Unions 1950-2008



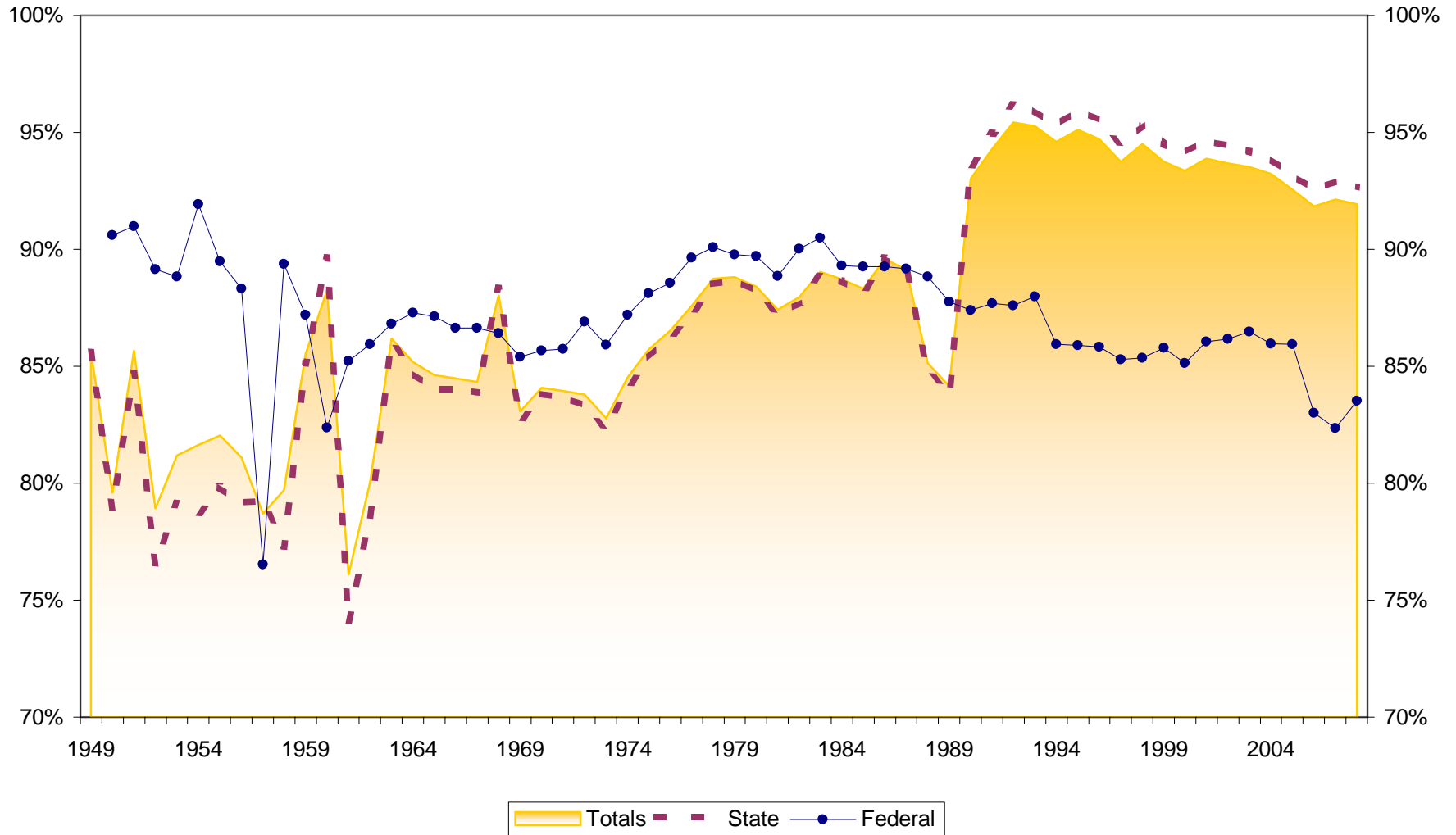
Loan Growth at Puerto Rico Credit Unions 1950-2008



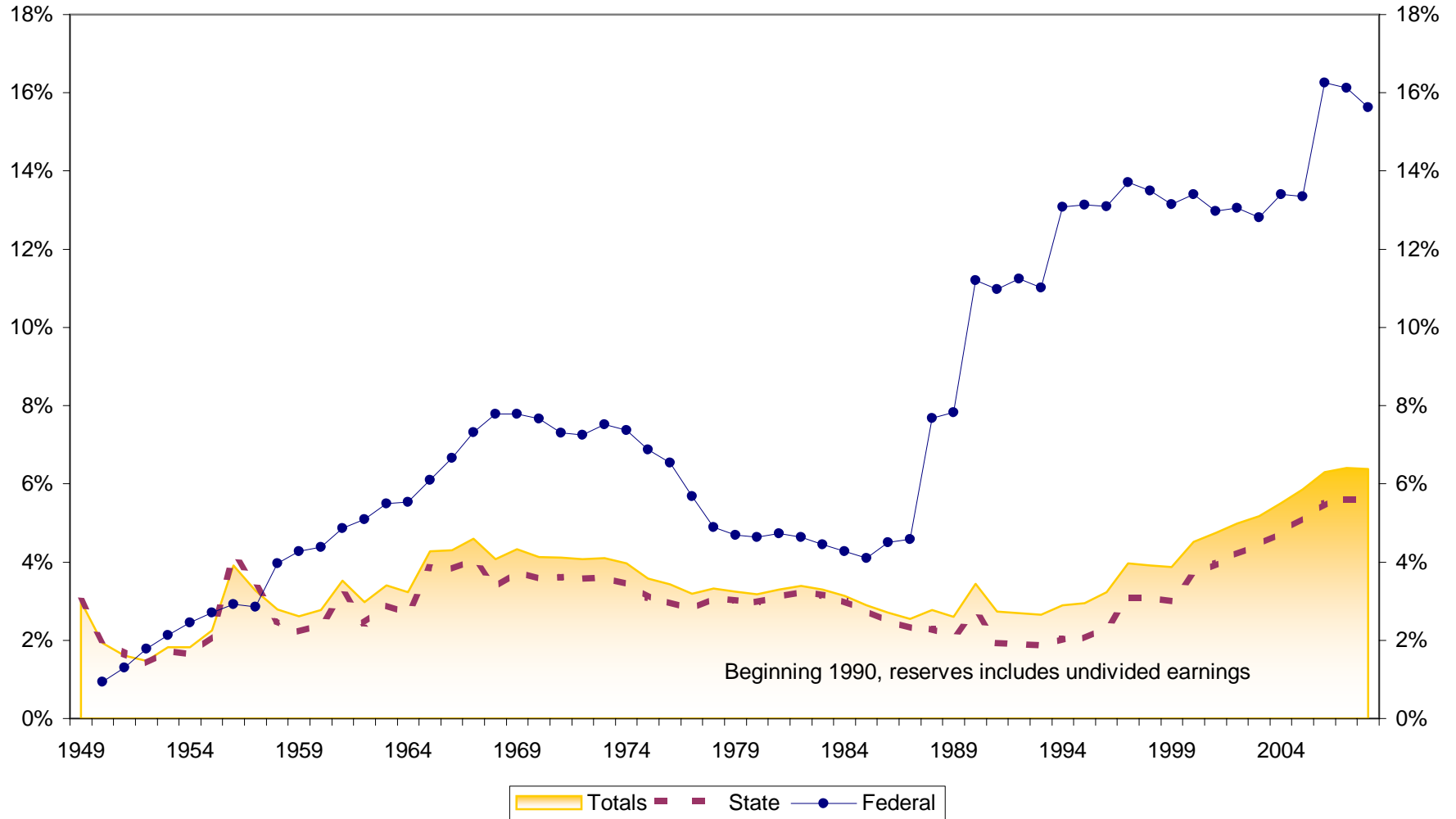
Loans to Savings Ratio at Puerto Rico Credit Unions 1949-2008



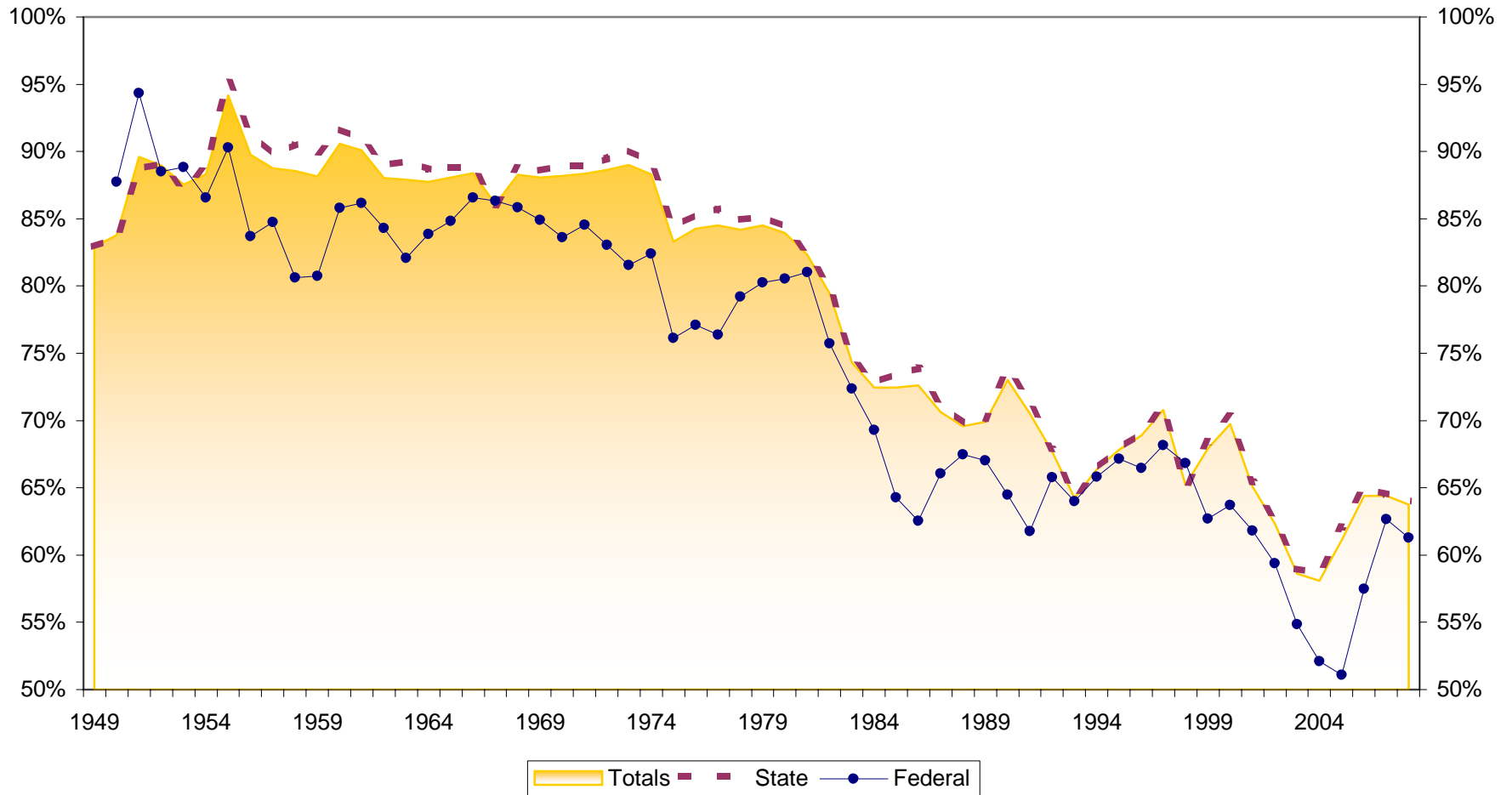
Savings to Assets at Puerto Rico Credit Unions 1949-2008



Reserves to Assets at Puerto Rico Credit Unions 1949-2008



Loans to Assets at Puerto Rico Credit Unions 1949-2008



Dollar Asset Growth at Puerto Rico Credit Unions (in \$Millions) 1950-2008

