

Louisiana Totals Statistics

| Year | # of CUs | # of Members | Savings (\$) | Loans (\$) | Reserves (\$)* | Assets (\$) |
|-------------|-----------------|---------------------|---------------------|-------------------|-----------------------|--------------------|
| 1939 | 102 | 25,292 | 1,556,906 | 1,473,416 | 83,824 | 1,778,945 |
| 1940 | 118 | 32,003 | 2,015,302 | 1,883,186 | | 2,289,933 |
| 1941 | 139 | 35,110 | 2,526,465 | 2,101,101 | | 2,859,675 |
| 1942 | 166 | 32,922 | | 1,196,904 | | |
| 1943 | 175 | 31,603 | | 952,416 | | |
| 1944 | 139 | 32,241 | 2,775,840 | 1,037,703 | 281,554 | 3,081,504 |
| 1945 | 131 | 32,405 | 3,135,173 | 1,066,420 | 229,695 | 3,468,822 |
| 1946 | 129 | 34,869 | 3,612,713 | 1,615,942 | 370,203 | 4,170,453 |
| 1947 | 143 | 38,795 | 4,355,388 | 2,813,452 | 242,970 | 4,915,023 |
| 1948 | 144 | 45,750 | 5,475,271 | 4,233,070 | 471,758 | 6,158,032 |
| 1949 | 173 | 56,825 | 7,065,377 | 5,901,025 | 357,071 | 8,104,923 |
| 1950 | 182 | 64,196 | 8,863,262 | 8,149,129 | 570,057 | 10,194,492 |
| 1951 | 213 | 73,533 | 11,085,975 | 8,878,529 | 695,738 | 12,453,967 |
| 1952 | 246 | 85,990 | 14,888,038 | 12,354,363 | 702,212 | 16,795,332 |
| 1953 | 258 | 93,491 | 18,759,270 | 16,554,647 | 881,454 | 21,052,880 |
| 1954 | 288 | 104,314 | 23,124,739 | 19,320,437 | 1,128,070 | 26,144,930 |
| 1955 | 318 | 117,868 | 27,895,958 | 24,290,087 | 1,428,575 | 31,951,117 |
| 1956 | 346 | 133,237 | 35,056,633 | 30,585,688 | 1,822,871 | 40,264,257 |
| 1957 | 360 | 149,647 | 42,658,148 | 37,494,540 | 2,267,339 | 49,055,610 |
| 1958 | 370 | 162,563 | 50,256,462 | 42,086,152 | 2,780,579 | 57,641,783 |
| 1959 | 370 | 172,222 | 57,816,314 | 49,105,563 | 3,356,263 | 66,295,495 |
| 1960 | 381 | 182,098 | 64,774,713 | 58,116,429 | 4,039,830 | 74,482,753 |
| 1961 | 396 | 191,262 | 72,904,472 | 61,648,739 | 4,763,248 | 83,044,824 |
| 1962 | 413 | 199,724 | 80,660,103 | 68,465,411 | 5,549,390 | 92,269,994 |
| 1963 | 429 | 210,074 | 89,879,152 | 76,443,387 | 6,387,674 | 103,164,551 |
| 1964 | 433 | 222,727 | 101,268,961 | 84,018,874 | 7,377,964 | 116,283,314 |
| 1965 | 430 | 249,638 | 114,215,915 | 95,985,246 | 8,486,889 | 131,583,794 |
| 1966 | 449 | 240,132 | 125,645,780 | 107,906,242 | 9,678,578 | 145,820,397 |
| 1967 | 460 | 259,224 | 136,840,020 | 117,230,730 | 11,023,196 | 159,034,467 |
| 1968 | 475 | 283,813 | 150,086,450 | 132,999,506 | 12,574,176 | 175,792,304 |
| 1969 | 487 | 306,211 | 164,477,525 | 155,605,406 | 14,098,086 | 194,270,799 |
| 1970 | 469 | 325,126 | 179,920,590 | 167,920,851 | 15,353,578 | 211,765,843 |
| 1971 | 462 | 334,486 | 208,644,882 | 193,270,893 | 16,953,308 | 243,183,171 |
| 1972 | 469 | 357,359 | 240,453,890 | 219,841,766 | 18,636,080 | 279,310,292 |
| 1973 | 468 | 375,798 | 275,943,970 | 254,457,094 | 20,551,494 | 319,380,191 |
| 1974 | 468 | 402,495 | 309,018,807 | 289,031,787 | 23,097,045 | 357,470,783 |
| 1975 | 476 | 430,857 | 360,774,169 | 337,563,998 | 24,982,706 | 416,997,317 |
| 1976 | 491 | 459,361 | 416,798,367 | 406,916,690 | 28,288,057 | 484,548,022 |
| 1977 | 490 | 502,172 | 479,424,522 | 480,145,984 | 30,689,135 | 559,440,958 |
| 1978 | 492 | 535,483 | 551,545,343 | 561,369,103 | 32,349,981 | 647,238,012 |
| 1979 | 493 | 551,318 | 606,284,276 | 590,592,294 | 33,255,639 | 694,529,832 |
| 1980 | 492 | 589,682 | 684,431,000 | 600,302,000 | 34,497,000 | 765,811,000 |
| 1981 | 481 | 618,002 | 731,336,092 | 628,925,514 | 38,050,534 | 818,074,867 |
| 1982 | 469 | 644,048 | 848,525,646 | 661,399,340 | 41,351,094 | 944,697,207 |
| 1983 | 452 | 614,666 | 997,895,055 | 791,749,088 | 49,575,153 | 1,109,568,757 |
| 1984 | 433 | 632,590 | 1,110,363,950 | 959,678,948 | 59,087,650 | 1,251,322,643 |
| 1985 | 422 | 651,063 | 1,323,505,877 | 1,046,114,579 | 67,906,915 | 1,477,801,573 |
| 1986 | 409 | 673,704 | 1,588,453,599 | 1,138,642,652 | 75,487,483 | 1,751,524,326 |
| 1987 | 395 | 678,391 | 1,720,430,305 | 1,235,508,624 | 78,040,127 | 1,900,118,514 |
| 1988 | 384 | 708,610 | 1,854,388,919 | 1,358,465,044 | 100,341,275 | 2,052,201,462 |
| 1989 | 370 | 731,450 | 1,904,431,522 | 1,434,528,876 | 90,333,755 | 2,111,769,583 |
| 1990 | 357 | 750,258 | 2,075,055,253 | 1,510,394,958 | 195,847,132 | 2,320,759,022 |
| 1991 | 349 | 782,259 | 2,374,691,195 | 1,579,782,081 | 214,633,012 | 2,633,839,792 |
| 1992 | 335 | 807,765 | 2,586,324,240 | 1,648,567,377 | 266,204,392 | 2,900,287,759 |
| 1993 | 324 | 846,645 | 2,694,488,874 | 1,812,090,420 | 317,021,587 | 3,063,157,268 |
| 1994 | 318 | 865,666 | 2,790,962,434 | 2,067,692,603 | 363,722,575 | 3,203,331,411 |
| 1995 | 312 | 900,045 | 2,937,214,218 | 2,283,010,003 | 413,317,446 | 3,378,090,093 |
| 1996 | 301 | 926,806 | 3,078,184,335 | 2,484,029,549 | 456,502,210 | 3,563,738,928 |
| 1997 | 297 | 956,878 | 3,222,417,758 | 2,632,152,730 | 492,948,558 | 3,754,535,402 |
| 1998 | 296 | 991,287 | 3,482,560,152 | 2,716,909,143 | 529,829,663 | 4,036,578,744 |
| 1999 | 289 | 1,018,277 | 3,583,365,022 | 2,806,797,612 | 560,838,449 | 4,183,084,083 |
| 2000 | 284 | 1,052,533 | 3,646,170,139 | 3,000,738,666 | 603,668,457 | 4,289,611,312 |
| 2001 | 281 | 1,067,492 | 4,150,048,157 | 3,072,174,510 | 641,204,163 | 4,816,415,749 |
| 2002 | 276 | 1,083,526 | 4,534,847,134 | 3,108,029,302 | 690,590,495 | 5,252,367,484 |
| 2003 | 270 | 1,097,186 | 4,848,522,181 | 3,266,116,731 | 721,337,235 | 5,630,215,384 |
| 2004 | 260 | 1,093,372 | 5,016,863,271 | 3,494,040,565 | 765,042,841 | 5,822,090,432 |
| 2005 | 249 | 1,105,714 | 5,681,330,695 | 3,729,504,635 | 786,791,670 | 6,523,760,088 |
| 2006 | 243 | 1,107,448 | 5,527,006,030 | 4,019,087,185 | 849,753,124 | 6,433,952,671 |
| 2007 | 236 | 1,116,736 | 5,767,249,425 | 4,242,563,536 | 904,794,139 | 6,720,742,359 |
| 2008 | 232 | 1,142,035 | 6,236,216,309 | 4,539,454,818 | 949,819,635 | 7,273,796,992 |

* Beginning 1990, Reserves includes undivided earnings.

Louisiana State Statistics

| Year | # of CUs | # of Members | Savings (\$) | Loans (\$) | Reserves (\$)* | Assets (\$) |
|------|----------|--------------|--------------|-------------|----------------|---------------|
| 1939 | 25 | 6,500 | 476,051 | 495,401 | 46,159 | 568,751 |
| 1940 | 40 | 9,500 | 556,302 | 562,186 | | 659,933 |
| 1941 | 47 | 9,000 | 636,264 | 609,101 | | 751,675 |
| 1942 | 55 | 10,000 | | 434,647 | | |
| 1943 | 93 | 10,000 | | 406,416 | | |
| 1944 | 62 | 12,000 | 813,570 | 450,000 | 182,333 | 958,420 |
| 1945 | 56 | 11,000 | 844,379 | 359,356 | 121,853 | 984,055 |
| 1946 | 55 | 11,000 | 900,000 | 425,000 | 250,000 | 1,200,000 |
| 1947 | 72 | 12,000 | 1,175,625 | 890,268 | 101,254 | 1,399,968 |
| 1948 | 68 | 16,000 | 1,505,081 | 1,299,894 | 300,238 | 1,771,740 |
| 1949 | 78 | 20,000 | 1,918,061 | 1,650,050 | 134,769 | 2,287,300 |
| 1950 | 75 | 22,000 | 2,391,965 | 2,344,355 | 276,694 | 2,864,062 |
| 1951 | 89 | 25,000 | 2,917,524 | 2,639,341 | 326,765 | 3,355,184 |
| 1952 | 105 | 30,000 | 4,119,988 | 3,899,201 | 235,130 | 4,843,376 |
| 1953 | 99 | 30,451 | 5,133,940 | 4,878,975 | 295,266 | 5,890,213 |
| 1954 | 100 | 30,902 | 6,140,624 | 5,423,474 | 375,023 | 7,105,888 |
| 1955 | 97 | 31,354 | 7,102,562 | 6,575,749 | 459,145 | 8,523,243 |
| 1956 | 105 | 32,512 | 8,686,598 | 8,217,052 | 571,790 | 10,391,346 |
| 1957 | 101 | 36,324 | 10,465,803 | 9,911,535 | 695,457 | 12,334,078 |
| 1958 | 101 | 40,136 | 12,573,246 | 11,498,791 | 819,198 | 15,000,000 |
| 1959 | 101 | 43,949 | 14,770,020 | 13,615,283 | 981,481 | 17,109,559 |
| 1960 | 100 | 46,273 | 16,151,461 | 14,945,972 | 1,142,202 | 18,819,989 |
| 1961 | 99 | 47,832 | 17,909,795 | 15,722,757 | 1,342,602 | 20,626,937 |
| 1962 | 97 | 49,403 | 19,545,706 | 17,308,253 | 1,552,655 | 22,596,413 |
| 1963 | 95 | 51,760 | 21,257,462 | 19,073,030 | 1,736,230 | 24,687,943 |
| 1964 | 93 | 53,730 | 23,421,961 | 20,484,874 | 2,044,964 | 27,178,314 |
| 1965 | 92 | 72,163 | 25,799,915 | 23,756,246 | 2,275,889 | 30,164,794 |
| 1966 | 95 | 49,946 | 27,970,780 | 26,953,242 | 2,598,578 | 33,114,397 |
| 1967 | 96 | 55,859 | 30,557,020 | 29,240,730 | 2,927,196 | 36,144,467 |
| 1968 | 100 | 65,221 | 33,367,450 | 32,304,506 | 3,355,176 | 39,840,304 |
| 1969 | 102 | 62,962 | 35,981,525 | 36,175,406 | 3,772,086 | 43,282,799 |
| 1970 | 100 | 78,172 | 39,230,590 | 39,479,851 | 4,024,578 | 47,278,843 |
| 1971 | 101 | 74,941 | 44,484,882 | 44,806,893 | 4,486,308 | 53,252,171 |
| 1972 | 101 | 76,288 | 49,936,890 | 48,892,766 | 5,089,080 | 59,383,292 |
| 1973 | 102 | 78,909 | 55,745,970 | 54,512,094 | 5,505,494 | 66,585,191 |
| 1974 | 100 | 84,026 | 60,446,807 | 59,794,787 | 6,438,045 | 72,357,783 |
| 1975 | 100 | 90,095 | 68,134,932 | 67,444,920 | 7,016,706 | 80,991,636 |
| 1976 | 103 | 93,867 | 76,556,367 | 77,959,690 | 7,889,057 | 91,931,022 |
| 1977 | 103 | 101,473 | 87,094,522 | 89,631,984 | 8,607,135 | 103,770,958 |
| 1978 | 101 | 103,722 | 98,072,343 | 103,974,103 | 10,351,981 | 118,252,012 |
| 1979 | 101 | 108,812 | 106,780,276 | 110,333,294 | 9,620,639 | 126,231,832 |
| 1980 | 97 | 111,775 | 116,759,000 | 112,537,000 | 10,048,000 | 134,904,000 |
| 1981 | 98 | 117,791 | 128,148,092 | 122,662,514 | 10,705,534 | 149,473,867 |
| 1982 | 97 | 123,680 | 148,545,646 | 133,585,340 | 11,185,094 | 170,857,207 |
| 1983 | 97 | 123,899 | 175,395,055 | 151,649,088 | 13,142,153 | 200,268,757 |
| 1984 | 93 | 128,725 | 190,957,178 | 182,404,254 | 14,944,665 | 222,186,951 |
| 1985 | 91 | 134,225 | 236,724,876 | 204,273,062 | 16,934,880 | 270,058,398 |
| 1986 | 89 | 140,489 | 304,577,199 | 226,277,919 | 18,643,579 | 338,988,441 |
| 1987 | 87 | 130,655 | 340,899,641 | 252,950,952 | 20,365,116 | 377,366,375 |
| 1988 | 86 | 143,390 | 368,289,335 | 273,774,012 | 23,301,734 | 409,340,920 |
| 1989 | 83 | 145,507 | 369,144,062 | 276,810,360 | 21,557,589 | 401,726,388 |
| 1990 | 78 | 134,326 | 365,354,735 | 262,962,777 | 35,499,209 | 405,317,005 |
| 1991 | 77 | 136,690 | 422,197,498 | 276,914,242 | 39,957,590 | 466,500,447 |
| 1992 | 75 | 138,738 | 460,220,133 | 283,928,995 | 47,467,879 | 511,850,169 |
| 1993 | 72 | 147,131 | 484,994,384 | 311,472,416 | 55,673,951 | 545,141,578 |
| 1994 | 70 | 152,744 | 486,433,700 | 354,349,264 | 61,925,335 | 555,242,491 |
| 1995 | 68 | 156,716 | 515,544,235 | 404,767,090 | 69,661,861 | 590,255,549 |
| 1996 | 66 | 161,633 | 541,804,729 | 439,421,874 | 77,688,867 | 627,140,164 |
| 1997 | 65 | 168,805 | 572,614,178 | 461,808,802 | 83,491,071 | 664,501,251 |
| 1998 | 64 | 177,032 | 622,924,606 | 475,179,253 | 89,022,454 | 716,525,166 |
| 1999 | 63 | 183,167 | 643,829,995 | 484,676,607 | 94,991,207 | 743,423,802 |
| 2000 | 62 | 184,390 | 640,871,229 | 519,431,892 | 101,530,638 | 747,353,176 |
| 2001 | 61 | 178,176 | 687,150,597 | 489,616,516 | 99,126,236 | 790,121,270 |
| 2002 | 57 | 175,127 | 719,619,246 | 487,245,083 | 103,642,402 | 826,881,294 |
| 2003 | 57 | 174,501 | 761,558,463 | 510,446,024 | 111,165,540 | 877,053,999 |
| 2004 | 55 | 167,487 | 764,154,176 | 514,532,150 | 115,092,852 | 884,026,354 |
| 2005 | 53 | 170,694 | 877,580,859 | 543,044,234 | 122,263,088 | 1,005,302,498 |
| 2006 | 51 | 169,282 | 811,049,521 | 597,763,442 | 132,025,527 | 952,919,027 |
| 2007 | 48 | 160,795 | 794,551,032 | 621,170,788 | 139,640,180 | 946,067,140 |
| 2008 | 47 | 163,586 | 864,073,116 | 673,767,227 | 146,330,724 | 1,025,197,226 |

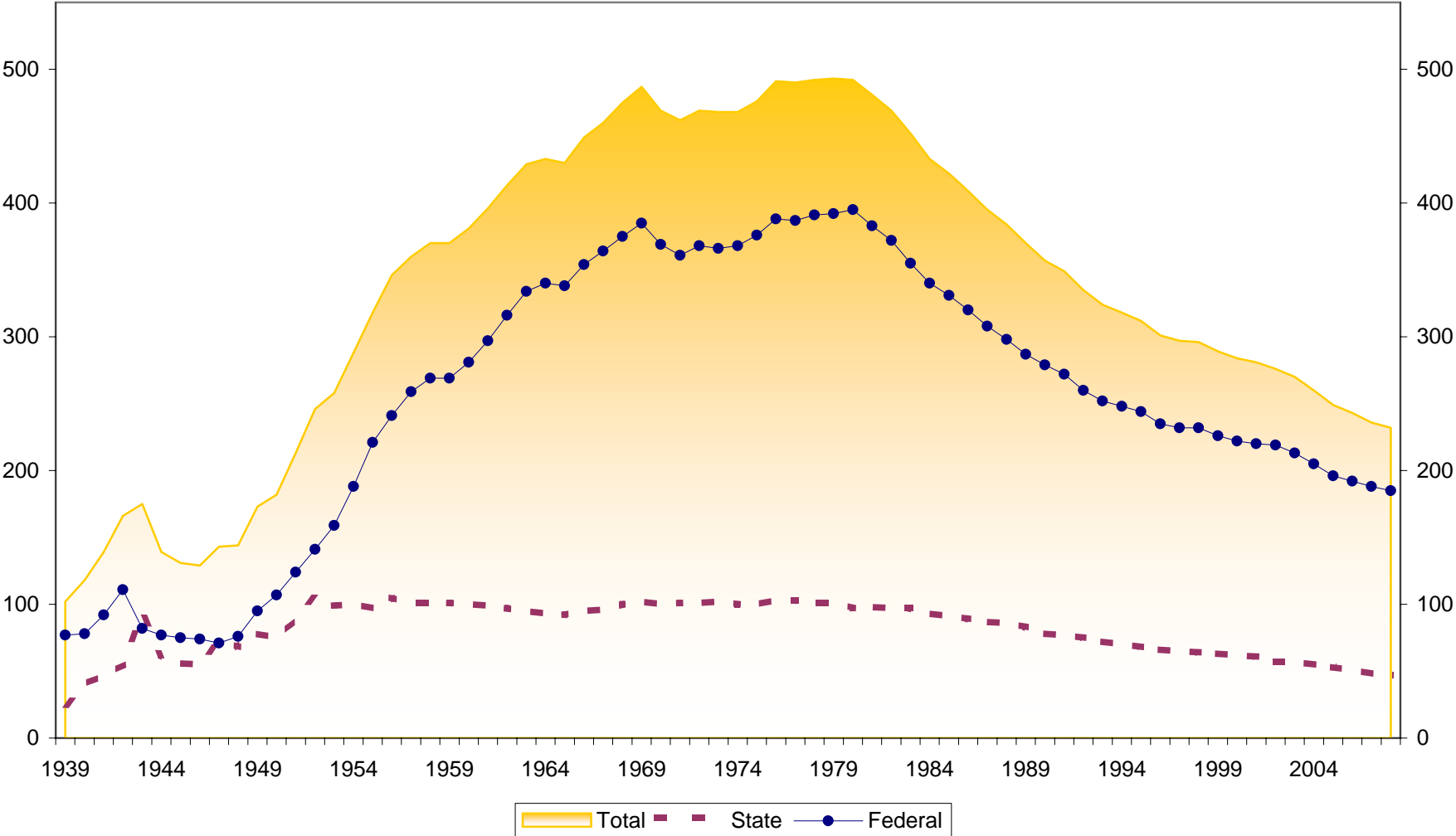
* Beginning 1990, Reserves includes undivided earnings.

Louisiana Federal Statistics

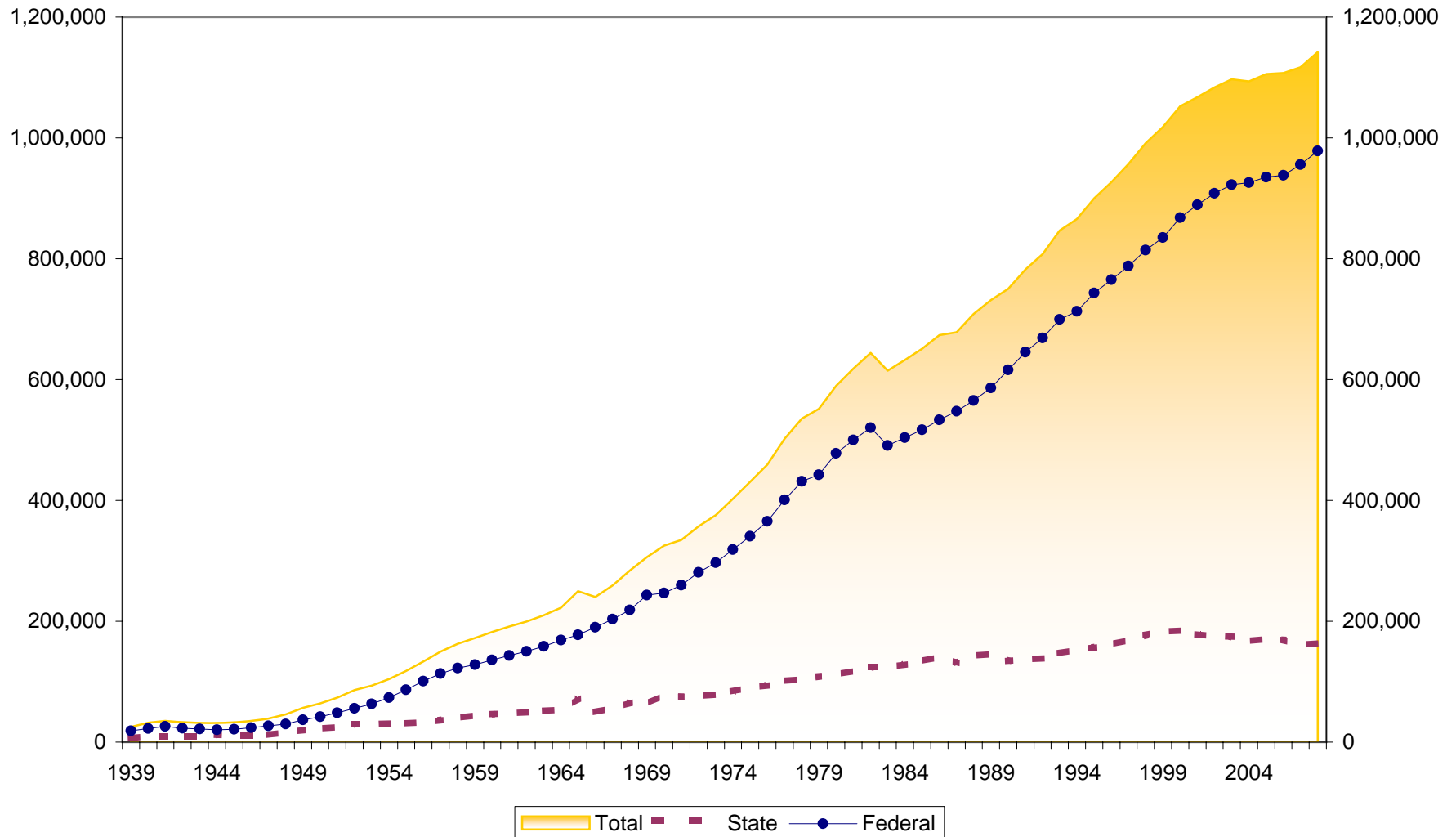
| Year | # of CUs | # of Members | Savings (\$) | Loans (\$) | Reserves (\$)* | Assets (\$) |
|-------------|-----------------|---------------------|---------------------|-------------------|-----------------------|--------------------|
| 1939 | 77 | 18,792 | 1,080,855 | 978,015 | 37,665 | 1,210,194 |
| 1940 | 78 | 22,503 | 1,459,000 | 1,321,000 | | 1,630,000 |
| 1941 | 92 | 26,110 | 1,890,201 | 1,492,000 | | 2,108,000 |
| 1942 | 111 | 22,922 | 1,847,756 | 762,257 | 91,712 | 2,043,637 |
| 1943 | 82 | 21,603 | 1,820,499 | 546,000 | | 1,984,000 |
| 1944 | 77 | 20,241 | 1,962,270 | 587,703 | 99,221 | 2,123,084 |
| 1945 | 75 | 21,405 | 2,290,794 | 707,064 | 107,842 | 2,484,767 |
| 1946 | 74 | 23,869 | 2,712,713 | 1,190,942 | 120,203 | 2,970,453 |
| 1947 | 71 | 26,795 | 3,179,763 | 1,923,184 | 141,716 | 3,515,055 |
| 1948 | 76 | 29,750 | 3,970,190 | 2,933,176 | 171,520 | 4,386,292 |
| 1949 | 95 | 36,825 | 5,147,316 | 4,250,975 | 222,302 | 5,817,623 |
| 1950 | 107 | 42,196 | 6,471,297 | 5,804,774 | 293,363 | 7,330,430 |
| 1951 | 124 | 48,533 | 8,168,451 | 6,239,188 | 368,973 | 9,098,783 |
| 1952 | 141 | 55,990 | 10,768,050 | 8,455,162 | 467,082 | 11,951,956 |
| 1953 | 159 | 63,040 | 13,625,330 | 11,675,672 | 586,188 | 15,162,667 |
| 1954 | 188 | 73,412 | 16,984,115 | 13,896,963 | 753,047 | 19,039,042 |
| 1955 | 221 | 86,514 | 20,793,396 | 17,714,338 | 969,430 | 23,427,874 |
| 1956 | 241 | 100,725 | 26,370,035 | 22,368,636 | 1,251,081 | 29,872,911 |
| 1957 | 259 | 113,323 | 32,192,345 | 27,583,005 | 1,571,882 | 36,721,532 |
| 1958 | 269 | 122,427 | 37,683,216 | 30,587,361 | 1,961,381 | 42,641,783 |
| 1959 | 269 | 128,273 | 43,046,294 | 35,490,280 | 2,374,782 | 49,185,936 |
| 1960 | 281 | 135,825 | 48,623,252 | 43,170,457 | 2,897,628 | 55,662,764 |
| 1961 | 297 | 143,430 | 54,994,677 | 45,925,982 | 3,420,646 | 62,417,887 |
| 1962 | 316 | 150,321 | 61,114,397 | 51,157,158 | 3,996,735 | 69,673,581 |
| 1963 | 334 | 158,314 | 68,621,690 | 57,370,357 | 4,651,444 | 78,476,608 |
| 1964 | 340 | 168,997 | 77,847,000 | 63,534,000 | 5,333,000 | 89,105,000 |
| 1965 | 338 | 177,475 | 88,416,000 | 72,229,000 | 6,211,000 | 101,419,000 |
| 1966 | 354 | 190,186 | 97,675,000 | 80,953,000 | 7,080,000 | 112,706,000 |
| 1967 | 364 | 203,365 | 106,283,000 | 87,990,000 | 8,096,000 | 122,890,000 |
| 1968 | 375 | 218,592 | 116,719,000 | 100,695,000 | 9,219,000 | 135,952,000 |
| 1969 | 385 | 243,249 | 128,496,000 | 119,430,000 | 10,326,000 | 150,988,000 |
| 1970 | 369 | 246,954 | 140,690,000 | 128,441,000 | 11,329,000 | 164,487,000 |
| 1971 | 361 | 259,545 | 164,160,000 | 148,464,000 | 12,467,000 | 189,931,000 |
| 1972 | 368 | 281,071 | 190,517,000 | 170,949,000 | 13,547,000 | 219,927,000 |
| 1973 | 366 | 296,889 | 220,198,000 | 199,945,000 | 15,046,000 | 252,795,000 |
| 1974 | 368 | 318,469 | 248,572,000 | 229,237,000 | 16,659,000 | 285,113,000 |
| 1975 | 376 | 340,762 | 292,639,237 | 270,119,078 | 17,966,000 | 336,005,681 |
| 1976 | 388 | 365,494 | 340,242,000 | 328,957,000 | 20,399,000 | 392,617,000 |
| 1977 | 387 | 400,699 | 392,330,000 | 390,514,000 | 22,082,000 | 455,670,000 |
| 1978 | 391 | 431,761 | 453,473,000 | 457,395,000 | 21,998,000 | 528,986,000 |
| 1979 | 392 | 442,506 | 499,504,000 | 480,259,000 | 23,635,000 | 568,298,000 |
| 1980 | 395 | 477,907 | 567,672,000 | 487,765,000 | 24,449,000 | 630,907,000 |
| 1981 | 383 | 500,211 | 603,188,000 | 506,263,000 | 27,345,000 | 668,601,000 |
| 1982 | 372 | 520,368 | 699,980,000 | 527,814,000 | 30,166,000 | 773,840,000 |
| 1983 | 355 | 490,767 | 822,500,000 | 640,100,000 | 36,433,000 | 909,300,000 |
| 1984 | 340 | 503,865 | 919,406,772 | 777,274,694 | 44,142,985 | 1,029,135,692 |
| 1985 | 331 | 516,838 | 1,086,781,001 | 841,841,517 | 50,972,035 | 1,207,743,175 |
| 1986 | 320 | 533,215 | 1,283,876,400 | 912,364,733 | 56,843,904 | 1,412,535,885 |
| 1987 | 308 | 547,736 | 1,379,530,664 | 982,557,672 | 57,675,011 | 1,522,752,139 |
| 1988 | 298 | 565,220 | 1,486,099,584 | 1,084,691,032 | 77,039,541 | 1,642,860,542 |
| 1989 | 287 | 585,943 | 1,535,287,460 | 1,157,718,516 | 68,776,166 | 1,710,043,195 |
| 1990 | 279 | 615,932 | 1,709,700,518 | 1,247,432,181 | 160,347,923 | 1,915,442,017 |
| 1991 | 272 | 645,569 | 1,952,493,697 | 1,302,867,839 | 174,675,422 | 2,167,339,345 |
| 1992 | 260 | 669,027 | 2,126,104,107 | 1,364,638,382 | 218,736,513 | 2,388,437,590 |
| 1993 | 252 | 699,514 | 2,209,494,490 | 1,500,618,004 | 261,347,636 | 2,518,015,690 |
| 1994 | 248 | 712,922 | 2,304,528,734 | 1,713,343,339 | 301,797,240 | 2,648,088,920 |
| 1995 | 244 | 743,329 | 2,421,669,983 | 1,878,242,913 | 343,655,585 | 2,787,834,544 |
| 1996 | 235 | 765,173 | 2,536,379,606 | 2,044,607,675 | 378,813,343 | 2,936,598,764 |
| 1997 | 232 | 788,073 | 2,649,803,580 | 2,170,343,928 | 409,457,487 | 3,090,034,151 |
| 1998 | 232 | 814,255 | 2,859,635,546 | 2,241,729,890 | 440,807,209 | 3,320,053,578 |
| 1999 | 226 | 835,110 | 2,939,535,027 | 2,322,121,005 | 465,847,242 | 3,439,660,281 |
| 2000 | 222 | 868,143 | 3,005,298,910 | 2,481,306,774 | 502,137,819 | 3,542,258,136 |
| 2001 | 220 | 889,316 | 3,462,897,560 | 2,582,557,994 | 542,077,927 | 4,026,294,479 |
| 2002 | 219 | 908,399 | 3,815,227,888 | 2,620,784,219 | 586,948,093 | 4,425,486,190 |
| 2003 | 213 | 922,685 | 4,086,963,718 | 2,755,670,707 | 610,171,695 | 4,753,161,385 |
| 2004 | 205 | 925,885 | 4,252,709,095 | 2,979,508,415 | 649,949,989 | 4,938,064,078 |
| 2005 | 196 | 935,020 | 4,803,749,836 | 3,186,460,401 | 664,528,582 | 5,518,457,590 |
| 2006 | 192 | 938,166 | 4,715,956,509 | 3,421,323,743 | 717,727,597 | 5,481,033,644 |
| 2007 | 188 | 955,941 | 4,972,698,393 | 3,621,392,748 | 765,153,959 | 5,774,675,219 |
| 2008 | 185 | 978,449 | 5,372,143,193 | 3,865,687,591 | 803,488,911 | 6,248,599,766 |

* Beginning 1990, Reserves includes undivided earnings.

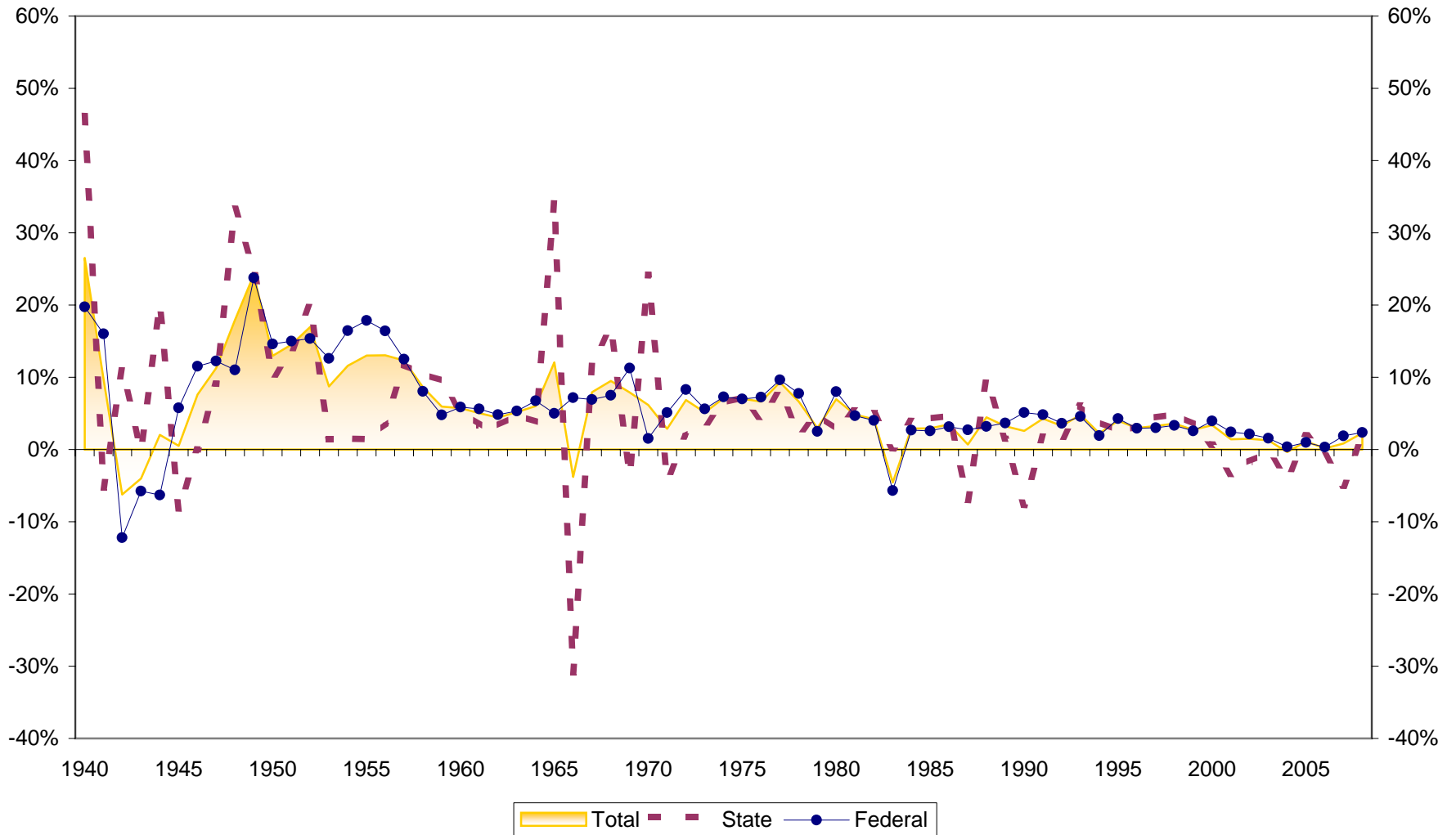
Number of Louisiana Credit Unions 1939-2008



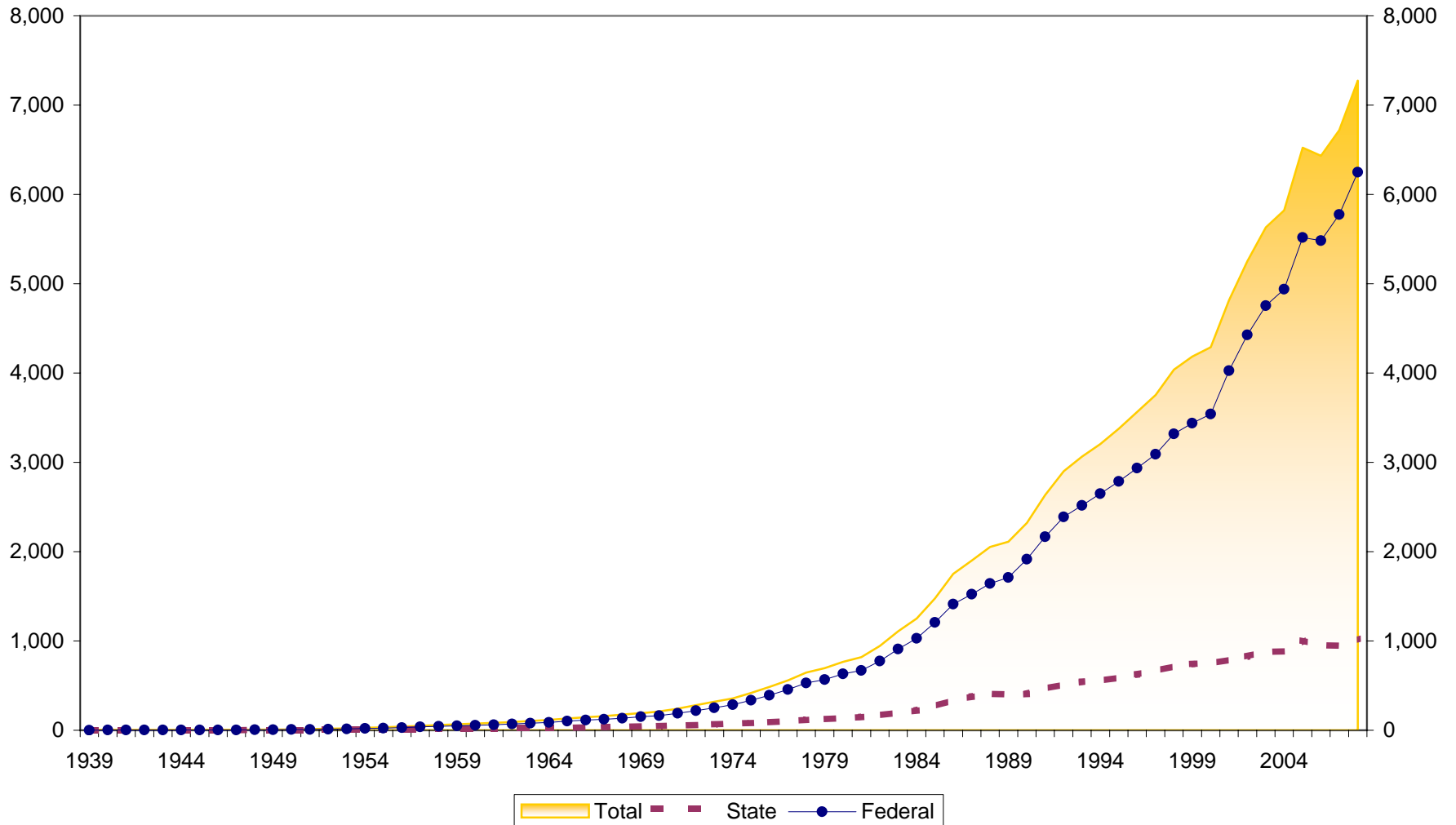
Number of Members at Louisiana Credit Unions 1939-2008



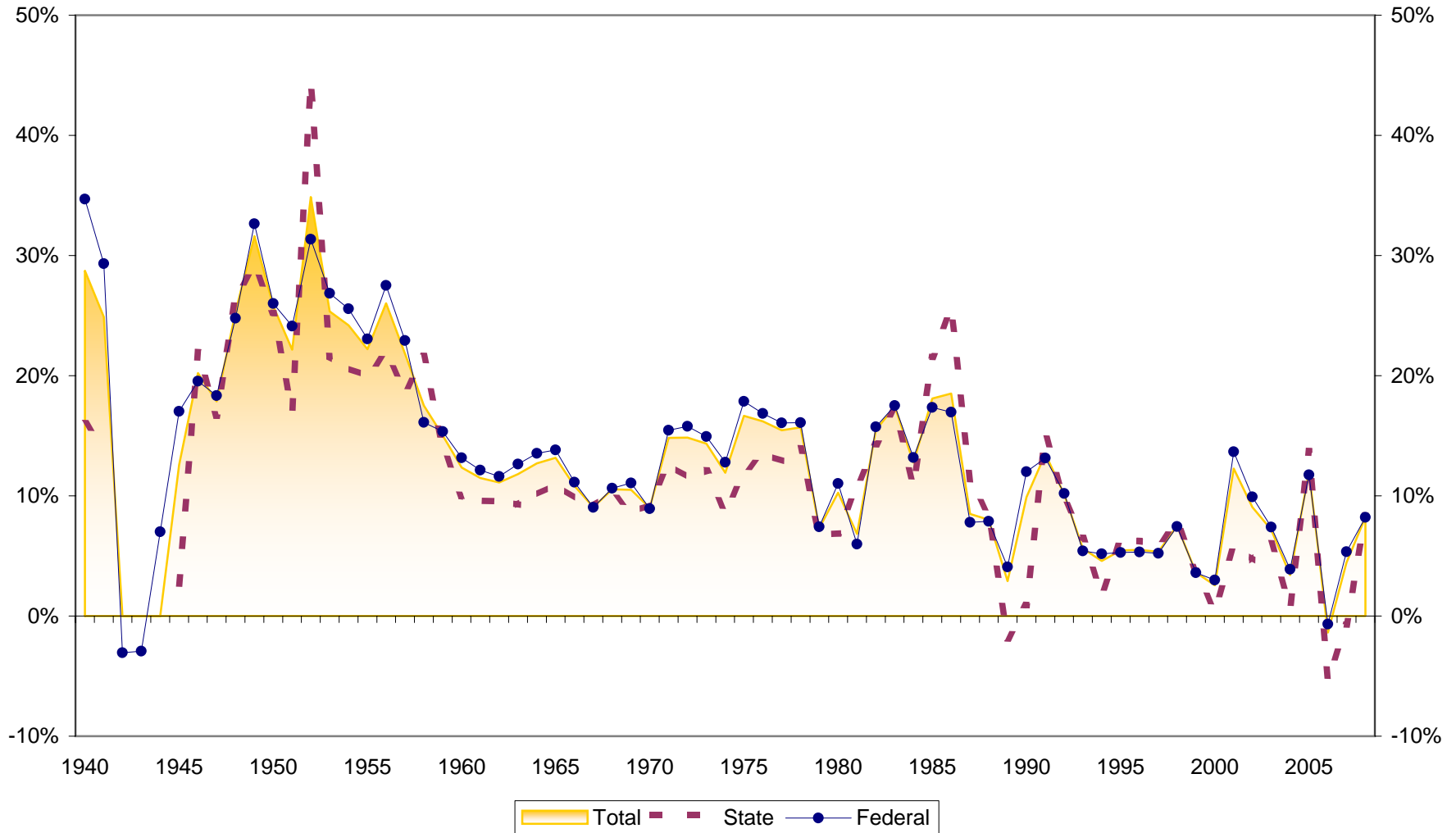
Membership Growth at Louisiana Credit Unions 1940-2008



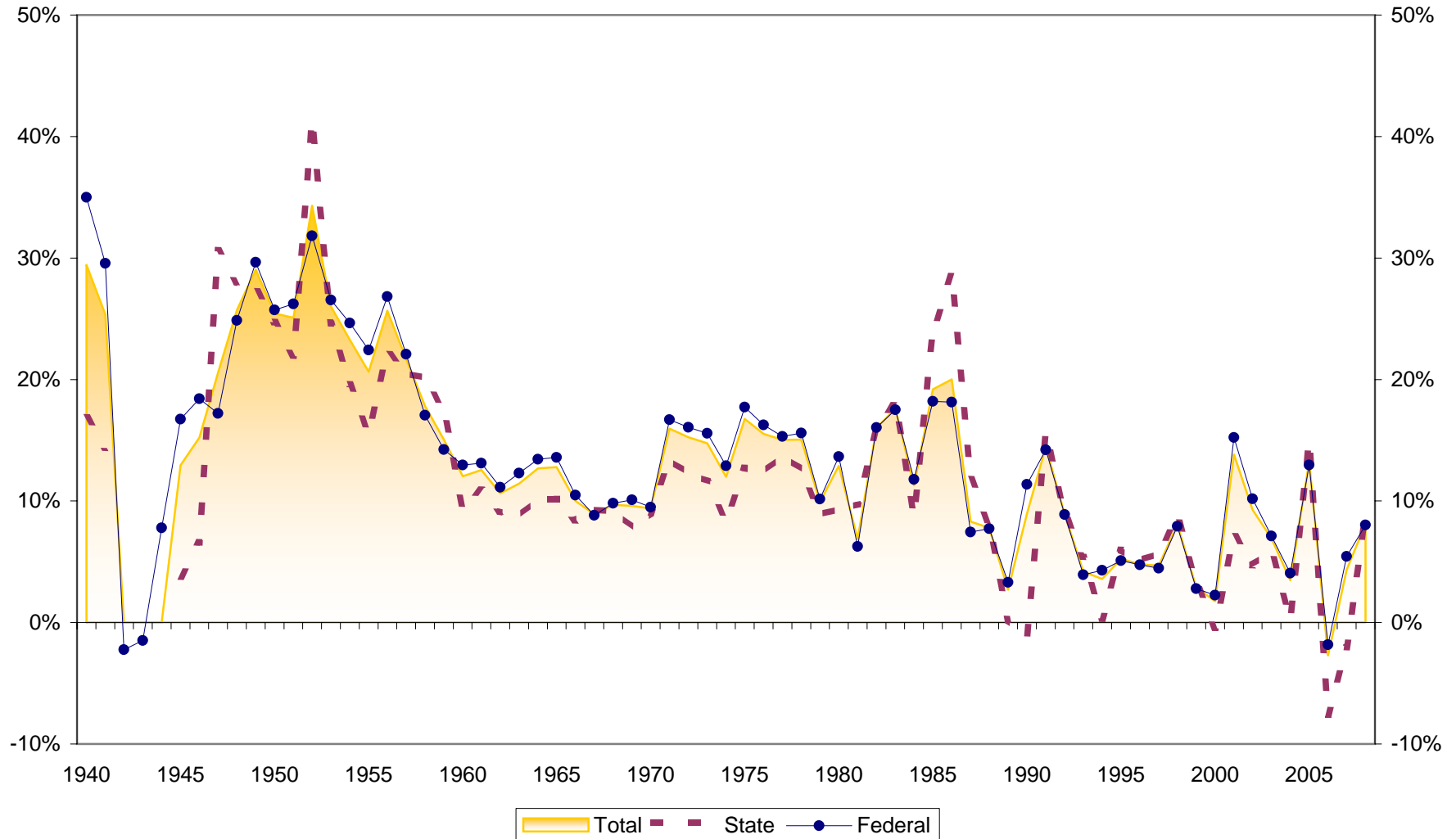
Assets at Louisiana Credit Unions (in \$Millions) 1939-2008



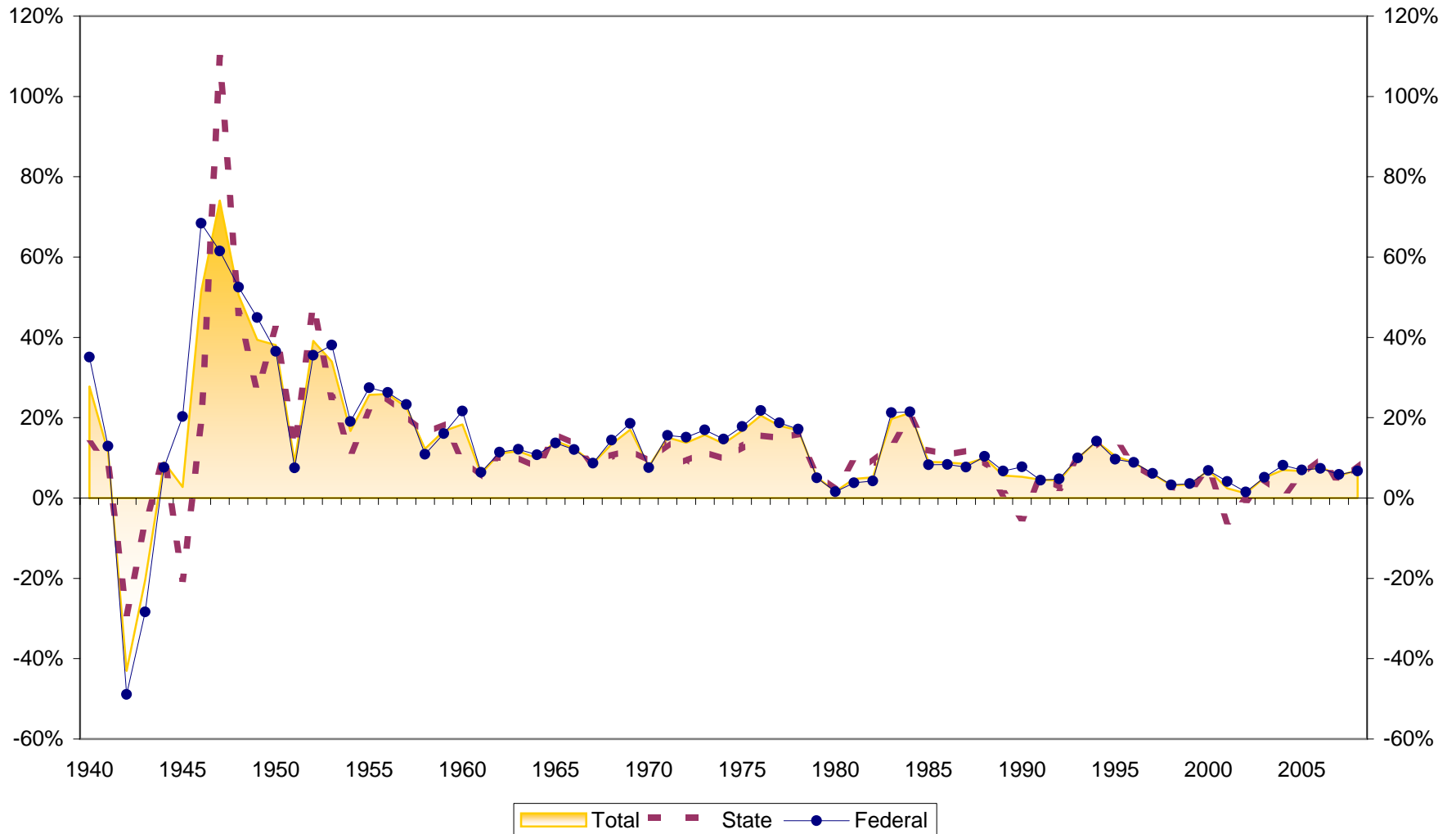
Asset Growth at Louisiana Credit Unions 1940-2008



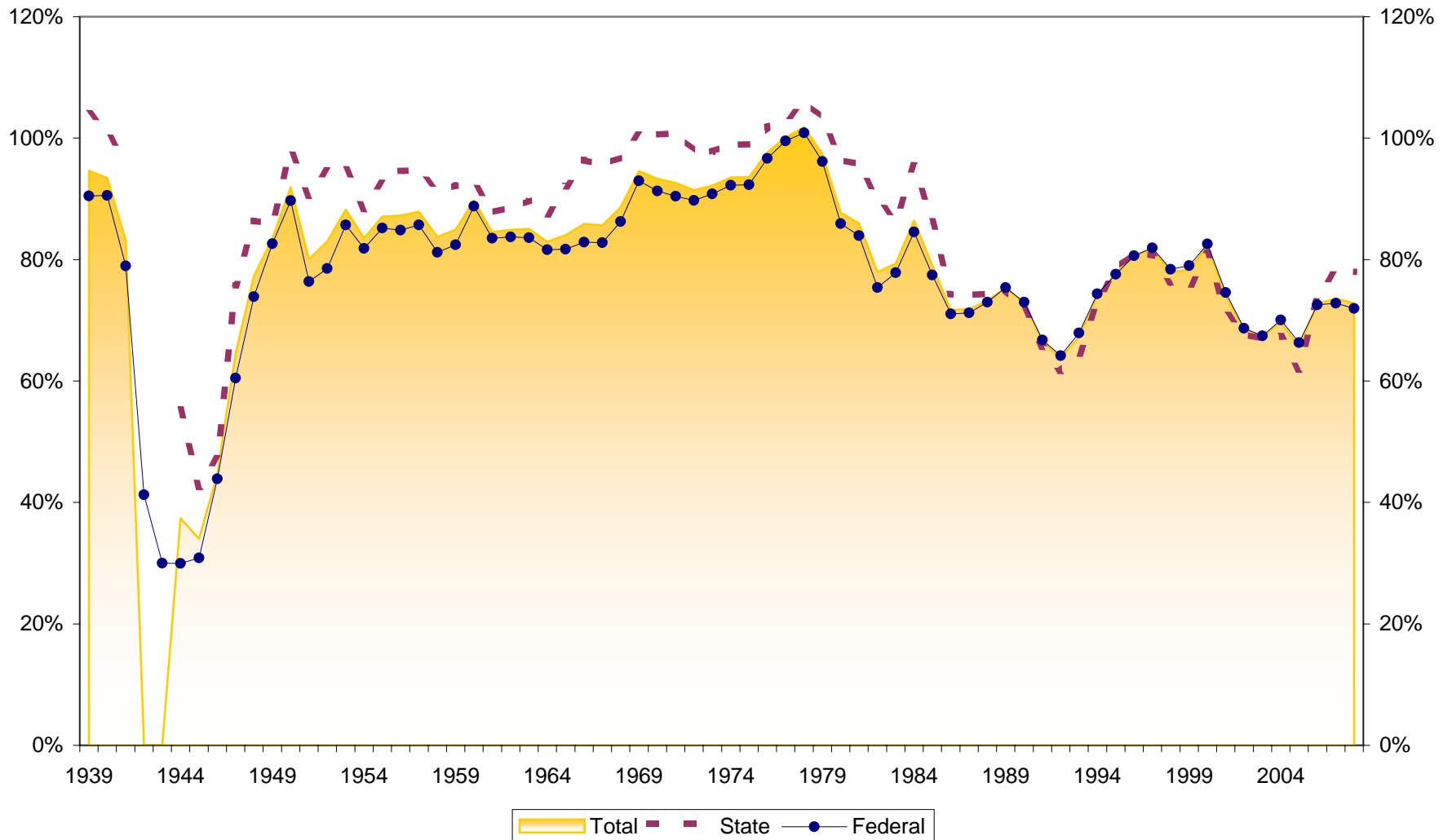
Savings Growth at Louisiana Credit Unions 1940-2008



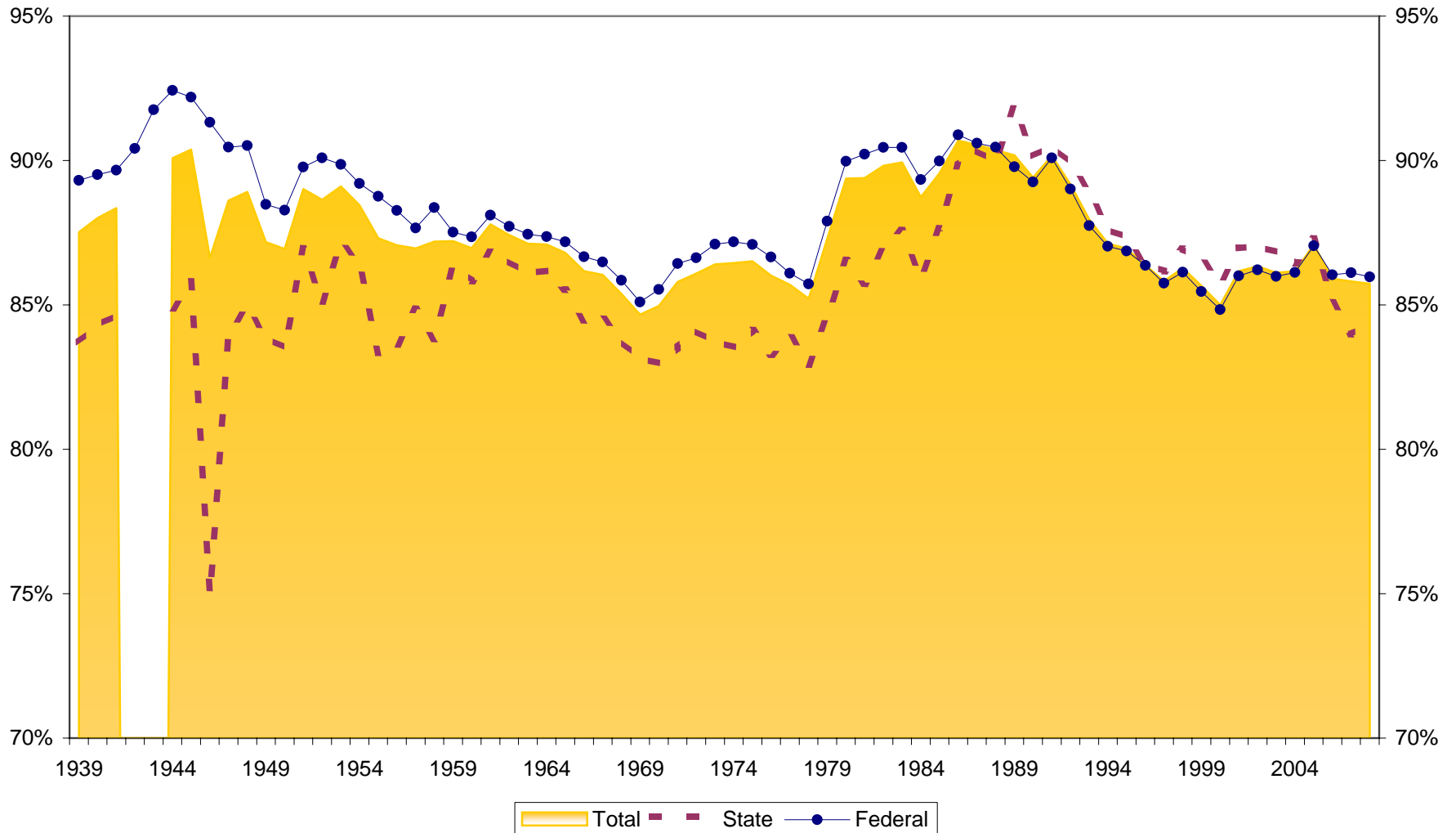
Loan Growth at Louisiana Credit Unions 1940-2008



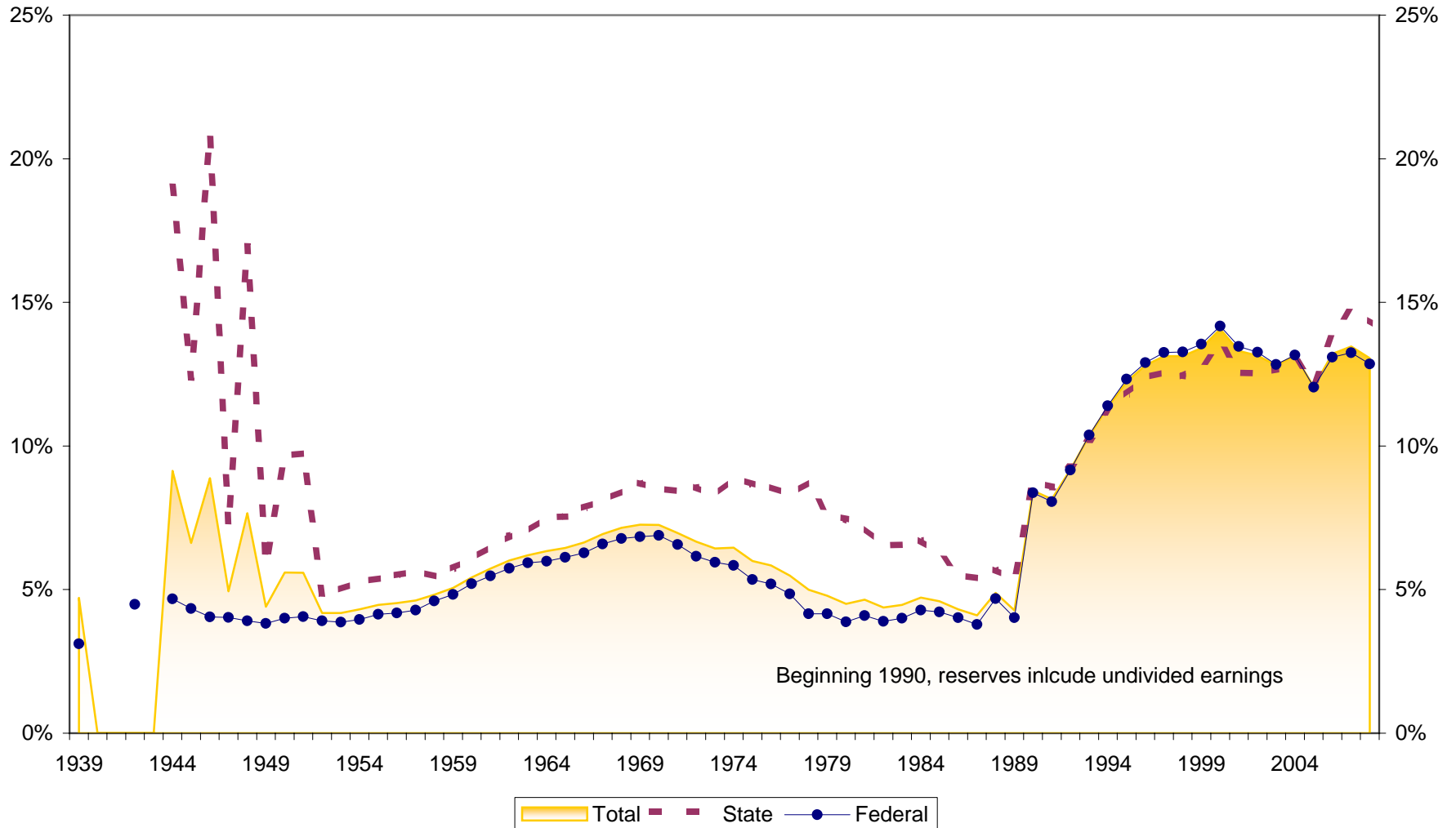
Loans to Savings Ratio at Louisiana Credit Unions 1940-2008



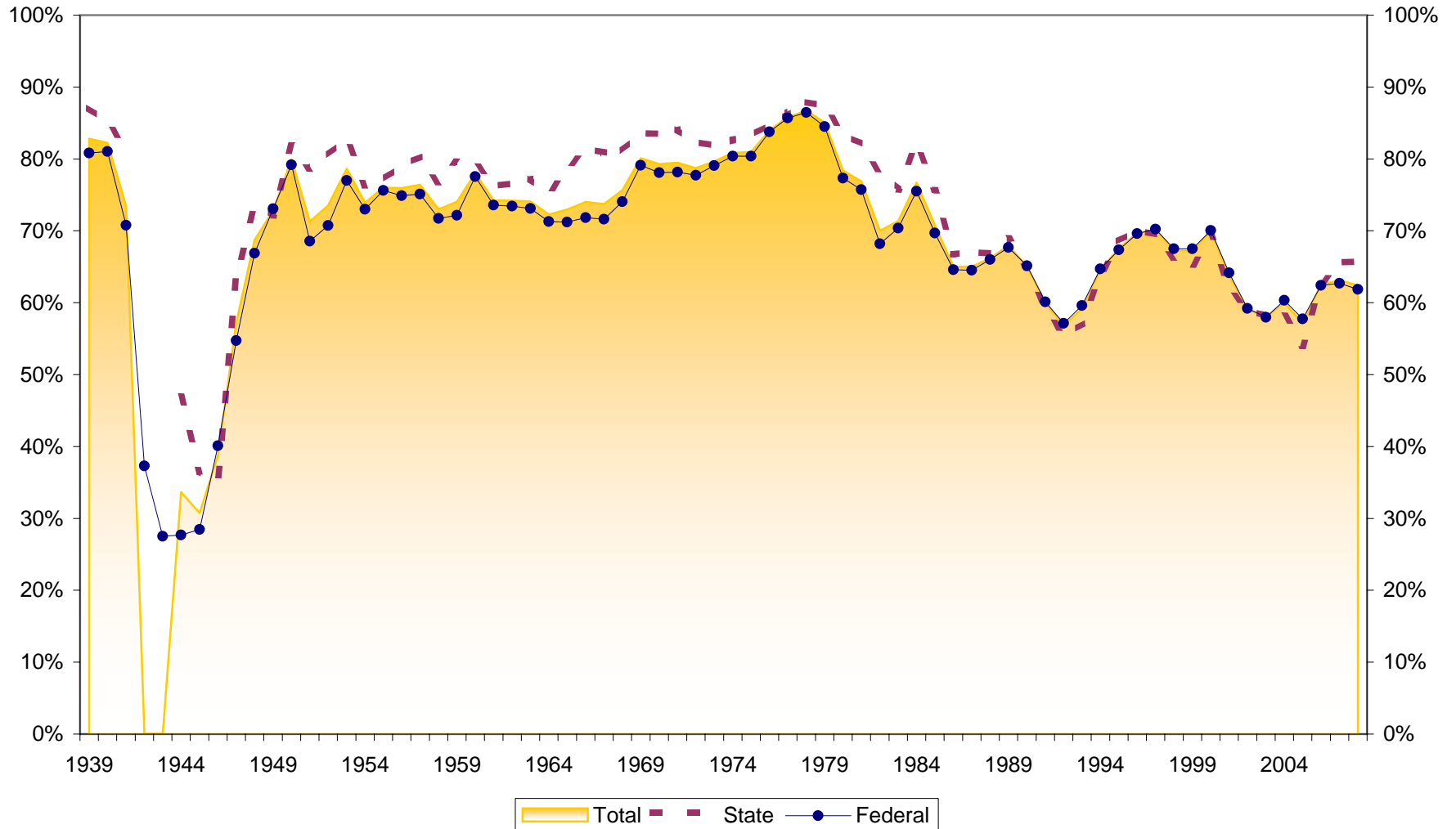
Savings to Assets at Louisiana Credit Unions 1940-2008



Reserves to Assets at Louisiana Credit Unions 1940-2008



Loans to Assets at Louisiana Credit Unions 1940-2008



Dollar Asset Growth at Louisiana Credit Unions 1939-2008

