

Indiana Totals Statistics

Year	# of CUs	# of Members	Savings (\$)	Loans (\$)	Reserves (\$)*	Assets (\$)
1939	291	72,008	3,799,500	3,244,858	253,556	4,213,778
1940	307	86,826	5,479,129	4,556,032		6,053,877
1941	332	105,144	7,471,393	5,292,534		8,237,403
1942	337	101,673			147,461	
1943	343	107,736				
1944	299	97,967	12,106,052	3,378,962	869,698	13,217,602
1945	297	93,502	12,893,396	3,529,359	605,425	14,099,255
1946	300	97,862	14,351,434	5,517,037		15,519,997
1947	307	101,611	17,384,389	8,160,338	745,738	18,872,760
1948	307	126,476	20,098,799	11,352,634	1,112,620	22,015,117
1949	327	136,088	22,973,858	14,201,708	1,096,454	25,476,174
1950	327	147,197	26,915,306	18,646,360	1,362,544	29,729,055
1951	340	156,328	32,922,686	20,164,897	1,654,506	36,174,724
1952	361	175,292	41,063,685	25,013,505	1,541,881	44,908,163
1953	396	192,661	52,424,254	33,705,705	2,549,650	57,582,379
1954	405	201,550	60,626,377	38,572,733	2,453,906	66,894,330
1955	422	213,482	71,127,103	45,843,298	2,970,385	78,572,322
1956	444	227,741	80,819,779	53,743,246	3,607,469	89,796,949
1957	451	238,000	92,373,025	62,584,810	4,355,356	102,570,890
1958	452	240,000	101,546,692	64,454,717	4,959,872	112,874,808
1959	458	245,000	111,202,220	75,996,241	5,848,969	125,119,006
1960	472	256,800	121,571,755	87,890,648	7,004,508	136,483,515
1961	495	304,257	138,483,056	100,668,066	8,687,414	155,180,140
1962	503	320,928	158,767,970	115,598,117	9,993,197	178,037,623
1963	524	342,063	179,968,577	135,639,074	11,589,117	202,252,029
1964	545	374,466	209,388,782	157,490,842	13,389,993	237,251,797
1965	566	402,465	241,620,686	184,311,880	15,902,503	273,530,413
1966	583	434,255	268,927,627	211,598,512	18,634,663	305,504,015
1967	598	455,440	299,524,362	232,277,797	21,651,928	339,256,869
1968	604	474,891	324,868,891	264,174,372	24,535,945	369,166,422
1969	604	511,432	355,227,475	300,728,072	28,043,503	403,321,381
1970	612	534,036	389,703,049	319,484,555	30,505,597	444,846,825
1971	598	570,315	461,209,959	367,671,370	32,908,003	523,894,732
1972	594	606,290	544,671,839	428,808,961	36,794,058	614,829,060
1973	598	687,151	623,620,691	496,517,255	41,431,609	711,663,723
1974	593	747,576	694,652,751	554,091,754	46,246,478	799,921,361
1975	584	751,366	816,403,799	615,985,909	50,797,999	935,448,011
1976	586	815,795	981,386,237	763,837,907	56,261,733	1,117,448,996
1977	583	893,602	1,152,694,900	946,830,888	62,310,527	1,324,244,506
1978	579	1,020,749	1,314,228,734	1,139,064,737	65,879,163	1,515,727,578
1979	570	1,012,653	1,380,516,283	1,194,497,558	67,666,670	1,580,424,385
1980	552	1,044,617	1,542,920,225	1,096,733,849	70,919,169	1,705,920,889
1981	532	1,143,189	1,668,720,231	1,149,253,239	76,038,686	1,840,157,488
1982	494	1,172,084	1,988,949,054	1,153,121,779	82,459,372	2,168,883,088
1983	463	1,178,504	2,384,267,223	1,331,981,343	86,776,466	2,565,587,659
1984	444	1,254,243	2,738,632,250	1,665,727,767	101,012,951	2,951,894,516
1985	426	1,305,321	3,238,979,174	1,843,634,683	107,469,520	3,489,002,273
1986	403	1,388,936	3,920,729,173	2,071,502,464	116,388,829	4,204,157,234
1987	387	1,467,860	4,233,664,706	2,443,446,990	128,113,421	4,551,424,531
1988	374	1,540,708	4,570,795,624	2,921,477,269	164,386,059	4,943,510,658
1989	359	1,612,432	4,794,655,852	3,228,668,207	161,988,886	5,191,914,378
1990	349	1,688,113	5,072,277,223	3,359,739,633	416,106,620	5,521,271,536
1991	332	1,685,056	5,435,879,799	3,452,317,271	460,150,026	5,929,940,545
1992	320	1,753,617	5,990,859,943	3,691,349,625	527,745,872	6,556,371,636
1993	314	1,818,940	6,317,040,620	4,115,950,036	613,317,647	6,980,011,808
1994	300	1,866,476	6,493,197,270	4,724,965,988	674,574,497	7,329,915,679
1995	295	1,905,037	6,861,452,630	5,184,069,461	772,471,778	7,740,389,481
1996	286	1,929,111	7,276,359,452	5,718,746,659	856,579,771	8,241,632,184
1997	281	1,967,148	7,673,190,471	6,176,008,138	934,662,425	8,721,555,213
1998	275	2,000,711	8,464,983,763	6,400,561,358	1,007,116,515	9,561,112,724
1999	269	2,063,131	8,799,239,921	6,897,650,089	1,078,543,519	10,051,101,547
2000	259	2,117,985	9,274,853,815	7,439,883,522	1,193,197,101	10,642,940,432
2001	249	2,136,604	10,229,830,853	7,957,659,747	1,286,905,467	11,747,179,322
2002	240	2,146,730	11,070,695,617	8,576,476,080	1,404,545,241	12,802,934,676
2003	235	2,182,979	11,758,724,311	9,252,900,740	1,500,321,553	13,776,980,088
2004	231	2,185,508	12,237,028,098	9,876,430,086	1,590,354,791	14,391,665,138
2005	221	2,207,542	12,532,055,723	10,695,791,296	1,659,903,057	15,069,112,778
2006	214	2,210,329	12,985,253,672	10,940,220,424	1,753,860,600	15,488,706,651
2007	209	2,216,643	13,441,683,338	11,419,583,847	1,845,660,914	16,224,261,814
2008	204	2,238,420	14,231,347,161	11,924,752,502	1,912,203,097	17,126,383,221

* Beginning 1990, Reserves includes undivided earnings.

Indiana State Statistics

Year	# of CUs	# of Members	Savings (\$)	Loans (\$)	Reserves (\$)*	Assets (\$)
1939	146	35,966	2,154,589	1,882,653	208,355	2,412,952
1940	155	36,247	2,747,129	2,285,032		3,067,877
1941	163	40,000	3,238,390	2,371,534		3,614,403
1942	135	38,000				
1943	179	40,000				
1944	139	28,000	4,617,820	1,570,524	680,020	5,129,313
1945	139	30,000	5,384,145	1,827,113	392,882	5,938,477
1946	147	30,500	6,324,558	2,780,026		6,849,199
1947	153	30,750	7,717,308	4,208,390	473,717	8,459,143
1948	150	49,000	8,607,225	5,507,288	781,293	9,520,463
1949	156	55,234	9,754,074	6,638,214	683,948	10,970,486
1950	147	56,000	10,649,619	8,200,022	826,918	11,897,163
1951	145	55,000	12,212,770	8,906,592	963,304	13,487,821
1952	148	63,000	14,590,945	10,098,226	660,179	15,996,990
1953	148	65,622	17,514,866	12,777,487	1,404,449	19,302,043
1954	155	68,244	20,217,608	15,250,163	976,164	22,422,835
1955	163	70,866	22,604,231	17,722,839	1,174,130	25,213,352
1956	163	73,488	25,610,894	20,389,828	1,330,076	28,634,495
1957	161	76,111	29,235,747	24,444,175	1,590,267	32,654,565
1958	157	74,854	33,199,366	26,657,054	1,750,343	36,893,120
1959	149	69,512	35,091,825	28,342,549	1,991,703	39,117,530
1960	145	70,213	37,592,852	31,948,237	2,290,908	42,275,082
1961	136	100,689	43,260,780	38,177,312	3,101,758	48,406,675
1962	134	102,069	49,365,054	41,702,405	3,376,333	55,236,209
1963	135	108,340	56,228,598	49,071,178	3,834,941	63,108,923
1964	130	110,371	64,088,782	55,687,842	4,342,993	72,417,797
1965	128	115,490	71,195,686	63,039,880	5,059,503	80,513,413
1966	122	116,455	77,090,627	70,429,512	5,815,663	87,217,015
1967	123	124,356	87,333,362	77,062,797	6,545,928	98,015,869
1968	121	126,513	94,093,891	85,187,372	7,392,945	106,168,422
1969	121	132,925	102,500,475	93,025,072	8,374,503	114,876,381
1970	121	136,448	112,343,049	99,278,555	9,027,597	125,147,825
1971	119	144,352	130,572,959	112,869,370	9,550,003	145,226,732
1972	118	151,717	153,581,839	128,904,961	11,285,058	169,642,060
1973	115	185,888	176,946,691	146,737,255	12,597,609	196,241,723
1974	113	208,195	197,582,751	166,732,754	13,987,478	219,936,361
1975	111	180,678	232,198,799	190,246,909	15,673,999	256,357,011
1976	109	183,715	250,360,237	208,816,907	15,962,733	276,251,996
1977	107	196,575	296,428,900	258,496,888	17,963,527	326,326,506
1978	108	225,341	341,046,734	316,344,737	21,147,163	382,942,578
1979	105	257,724	372,868,283	340,163,558	21,898,670	417,846,385
1980	104	264,057	423,232,225	324,928,849	24,336,169	470,405,889
1981	104	300,295	464,572,231	351,075,239	27,147,686	517,723,488
1982	98	315,309	563,643,054	356,382,779	29,641,372	623,510,088
1983	90	250,114	638,267,223	387,381,343	30,757,466	696,587,659
1984	85	217,554	581,144,475	360,095,803	24,065,573	633,987,078
1985	85	228,657	688,464,300	415,671,264	27,410,223	752,653,826
1986	82	244,341	842,419,551	467,602,529	28,880,686	915,248,285
1987	78	247,038	888,833,423	539,069,003	31,587,076	969,515,290
1988	74	258,187	938,339,559	625,359,847	36,714,421	1,031,839,945
1989	70	273,843	994,968,346	686,665,745	38,929,269	1,088,807,799
1990	69	306,125	1,070,290,046	723,947,889	95,371,547	1,172,908,794
1991	66	294,923	1,155,941,812	752,648,315	105,595,746	1,268,127,263
1992	63	294,578	1,216,287,406	749,916,921	120,737,836	1,344,218,664
1993	62	308,078	1,292,105,564	834,840,275	138,962,506	1,444,008,068
1994	58	322,668	1,342,435,983	977,321,973	143,446,097	1,584,590,238
1995	58	331,129	1,430,073,821	1,081,852,607	174,027,671	1,669,250,721
1996	56	338,511	1,499,743,182	1,200,173,009	191,598,309	1,756,497,117
1997	63	656,751	2,862,783,780	2,359,955,084	346,921,899	3,288,147,480
1998	63	677,151	3,219,819,171	2,432,271,958	378,851,222	3,647,680,264
1999	61	702,263	3,345,652,213	2,601,361,127	407,912,859	3,851,746,824
2000	59	710,564	3,507,721,732	2,791,386,520	461,551,625	4,074,608,677
2001	56	714,087	3,880,352,962	3,047,467,703	501,609,385	4,550,410,287
2002	54	728,446	4,297,218,012	3,412,715,573	554,251,606	5,099,323,093
2003	52	765,971	4,596,846,685	3,895,898,159	593,935,827	5,603,881,367
2004	50	775,891	4,861,997,110	4,202,418,978	638,796,670	5,914,744,762
2005	47	797,932	5,073,819,232	4,692,368,783	679,997,271	6,350,160,054
2006	45	826,640	5,430,130,494	4,880,812,666	732,173,163	6,700,237,280
2007	46	956,234	6,381,349,285	5,633,607,194	871,537,355	7,956,474,432
2008	46	976,325	6,666,876,915	5,947,329,043	914,464,467	8,323,344,899

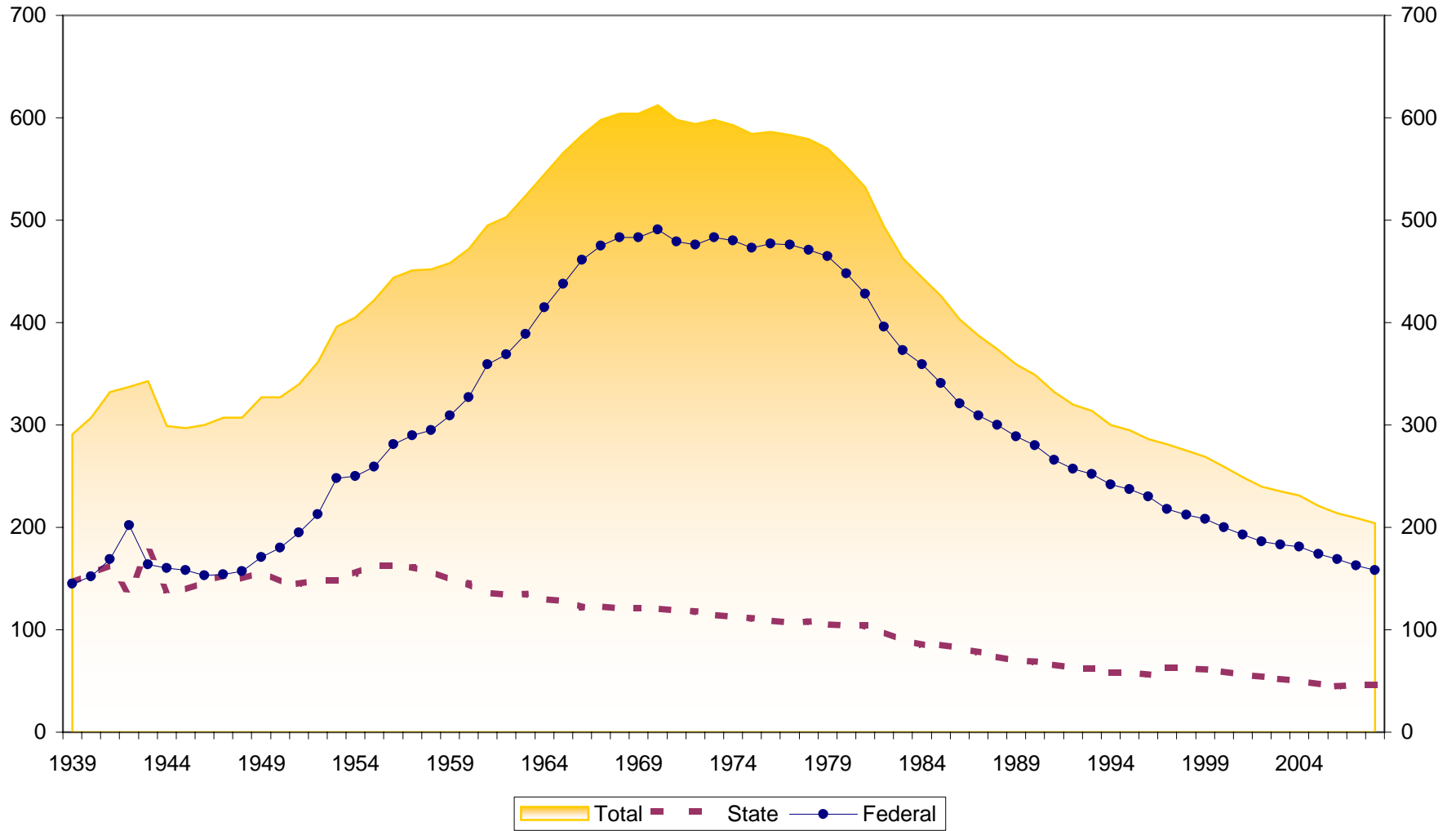
* Beginning 1990, Reserves includes undivided earnings.

Indiana Federal Statistics

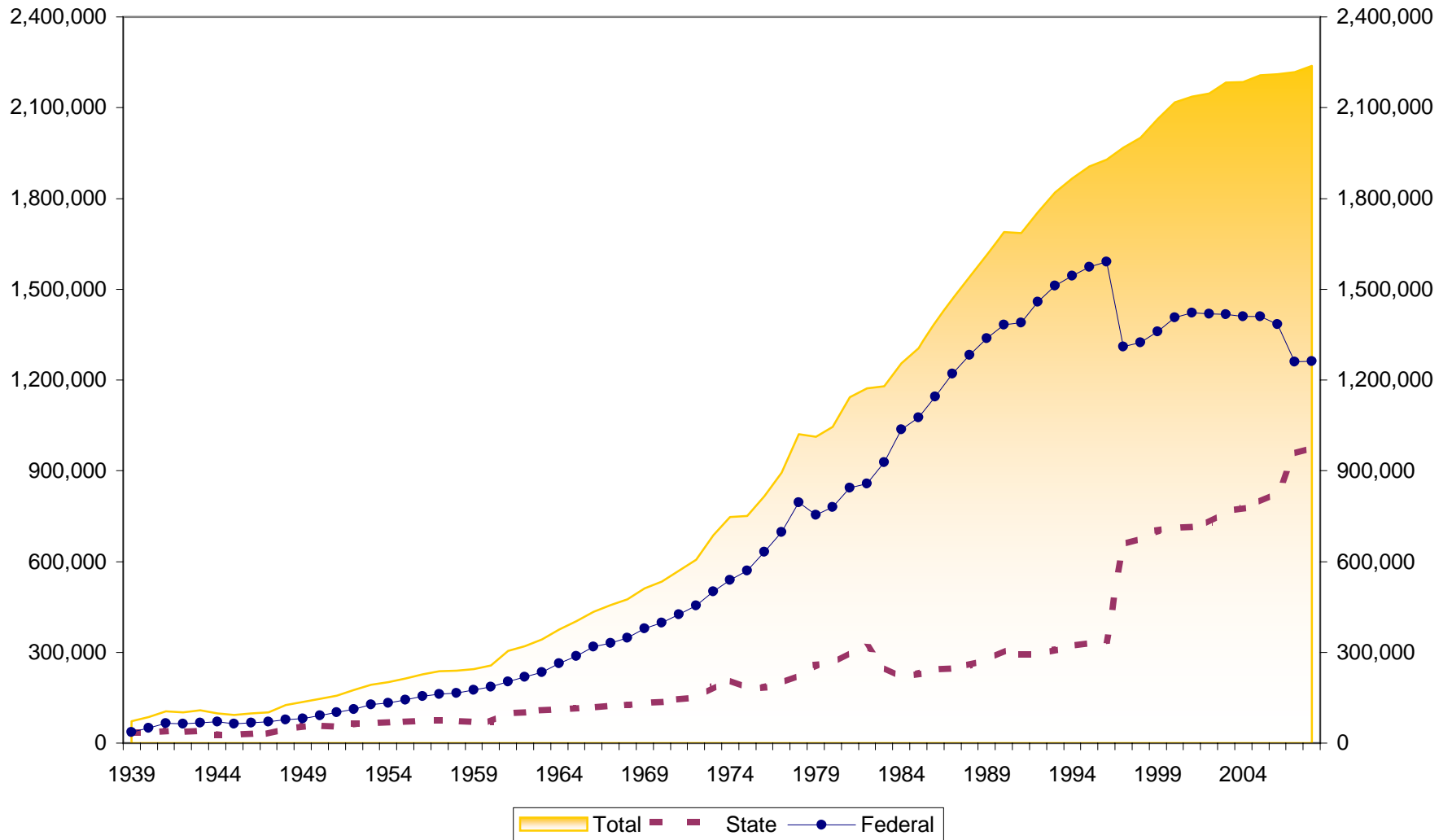
Year	# of CUs	# of Members	Savings (\$)	Loans (\$)	Reserves (\$)*	Assets (\$)
1939	145	36,042	1,644,911	1,362,205	45,201	1,800,826
1940	152	50,579	2,732,000	2,271,000		2,986,000
1941	169	65,144	4,233,003	2,921,000		4,623,000
1942	202	63,673	5,067,981	1,844,664	147,461	5,461,692
1943	164	67,736	6,089,235	1,832,000		6,807,000
1944	160	69,967	7,488,232	1,808,438	189,678	8,088,289
1945	158	63,502	7,509,251	1,702,246	212,543	8,160,778
1946	153	67,362	8,026,876	2,737,011		8,670,798
1947	154	70,861	9,667,081	3,951,948	272,021	10,413,617
1948	157	77,476	11,491,574	5,845,346	331,327	12,494,654
1949	171	80,854	13,219,784	7,563,494	412,506	14,505,688
1950	180	91,197	16,265,687	10,446,338	535,626	17,831,892
1951	195	101,328	20,709,916	11,258,305	691,202	22,686,903
1952	213	112,292	26,472,740	14,915,279	881,702	28,911,173
1953	248	127,039	34,909,388	20,928,218	1,145,201	38,280,336
1954	250	133,306	40,408,769	23,322,570	1,477,742	44,471,495
1955	259	142,616	48,522,872	28,120,459	1,796,255	53,358,970
1956	281	154,253	55,208,885	33,353,418	2,277,393	61,162,454
1957	290	161,889	63,137,278	38,140,635	2,765,089	69,916,325
1958	295	165,146	68,347,326	37,797,663	3,209,529	75,981,688
1959	309	175,488	76,110,395	47,653,692	3,857,266	86,001,476
1960	327	186,587	83,978,903	55,942,411	4,713,600	94,208,433
1961	359	203,568	95,222,276	62,490,754	5,585,656	106,773,465
1962	369	218,859	109,402,916	73,895,712	6,616,864	122,801,414
1963	389	233,723	123,739,979	86,567,896	7,754,176	139,143,106
1964	415	264,095	145,300,000	101,803,000	9,047,000	164,834,000
1965	438	286,975	170,425,000	121,272,000	10,843,000	193,017,000
1966	461	317,800	191,837,000	141,169,000	12,819,000	218,287,000
1967	475	331,084	212,191,000	155,215,000	15,106,000	241,241,000
1968	483	348,378	230,775,000	178,987,000	17,143,000	262,998,000
1969	483	378,507	252,727,000	207,703,000	19,669,000	288,445,000
1970	491	397,588	277,360,000	220,206,000	21,478,000	319,699,000
1971	479	425,963	330,637,000	254,802,000	23,358,000	378,668,000
1972	476	454,573	391,090,000	299,904,000	25,509,000	445,187,000
1973	483	501,263	446,674,000	349,780,000	28,834,000	515,422,000
1974	480	539,381	497,070,000	387,359,000	32,259,000	579,985,000
1975	473	570,688	584,205,000	425,739,000	35,124,000	679,091,000
1976	477	632,080	731,026,000	555,021,000	40,299,000	841,197,000
1977	476	697,027	856,266,000	688,334,000	44,347,000	997,918,000
1978	471	795,408	973,182,000	822,720,000	44,732,000	1,132,785,000
1979	465	754,929	1,007,648,000	854,334,000	45,768,000	1,162,578,000
1980	448	780,560	1,119,688,000	771,805,000	46,583,000	1,235,515,000
1981	428	842,894	1,204,148,000	798,178,000	48,891,000	1,322,434,000
1982	396	856,775	1,425,306,000	796,739,000	52,818,000	1,545,373,000
1983	373	928,390	1,746,000,000	944,600,000	56,019,000	1,869,000,000
1984	359	1,036,689	2,157,487,775	1,305,631,964	76,947,378	2,317,907,438
1985	341	1,076,664	2,550,514,874	1,427,963,419	80,059,297	2,736,348,447
1986	321	1,144,595	3,078,309,622	1,603,899,935	87,508,143	3,288,908,949
1987	309	1,220,822	3,344,831,283	1,904,377,987	96,526,345	3,581,909,241
1988	300	1,282,521	3,632,456,065	2,296,117,422	127,671,638	3,911,670,713
1989	289	1,338,589	3,799,687,506	2,542,002,462	123,059,617	4,103,106,579
1990	280	1,381,988	4,001,987,177	2,635,791,744	320,735,073	4,348,362,742
1991	266	1,390,133	4,279,937,987	2,699,668,956	354,554,280	4,661,813,282
1992	257	1,459,039	4,774,572,537	2,941,432,704	407,008,036	5,212,152,972
1993	252	1,510,862	5,024,935,056	3,281,109,761	474,355,141	5,536,003,740
1994	242	1,543,808	5,150,761,287	3,747,644,015	531,128,400	5,745,325,441
1995	237	1,573,908	5,431,378,809	4,102,216,854	598,444,107	6,071,138,760
1996	230	1,590,600	5,776,616,270	4,518,573,650	664,981,462	6,485,135,067
1997	218	1,310,397	4,810,406,691	3,816,053,054	587,740,526	5,433,407,733
1998	212	1,323,560	5,245,164,592	3,968,289,400	628,265,293	5,913,432,460
1999	208	1,360,868	5,453,587,708	4,296,288,962	670,630,660	6,199,354,723
2000	200	1,407,421	5,767,132,083	4,648,497,002	731,645,476	6,568,331,755
2001	193	1,422,517	6,349,477,891	4,910,192,044	785,296,082	7,196,769,035
2002	186	1,418,284	6,773,477,605	5,163,760,507	850,293,635	7,703,611,583
2003	183	1,417,008	7,161,877,626	5,357,002,581	906,385,726	8,173,098,721
2004	181	1,409,617	7,375,030,988	5,674,011,108	951,558,121	8,476,920,376
2005	174	1,409,610	7,458,236,491	6,003,422,513	979,905,786	8,718,952,724
2006	169	1,383,689	7,555,123,178	6,059,407,758	1,021,687,437	8,788,469,371
2007	163	1,260,409	7,060,334,053	5,785,976,653	974,123,559	8,267,787,382
2008	158	1,262,095	7,564,470,246	5,977,423,459	997,738,630	8,803,038,322

* Beginning 1990, Reserves includes undivided earnings.

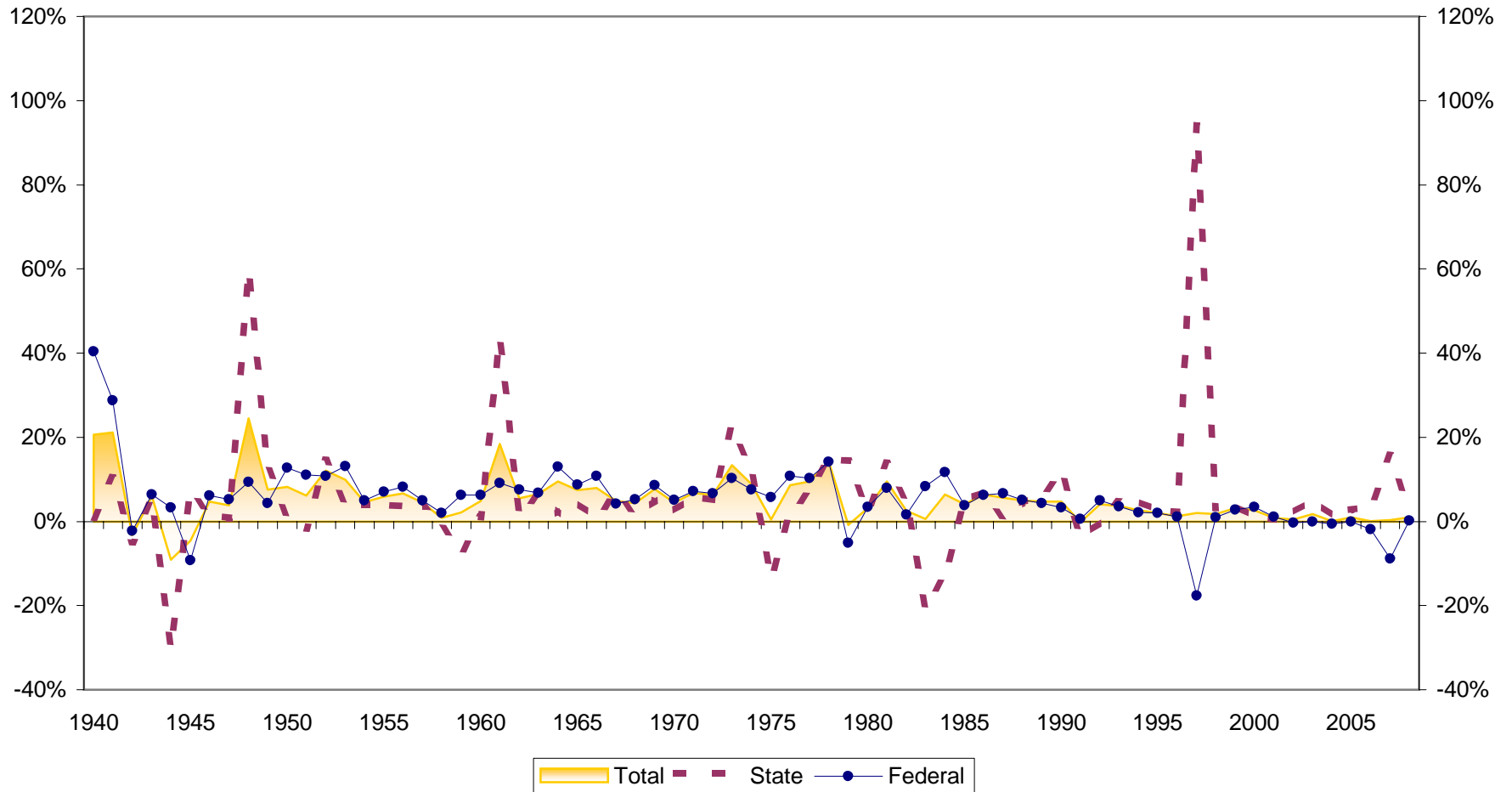
Number of Indiana Credit Unions 1939-2008



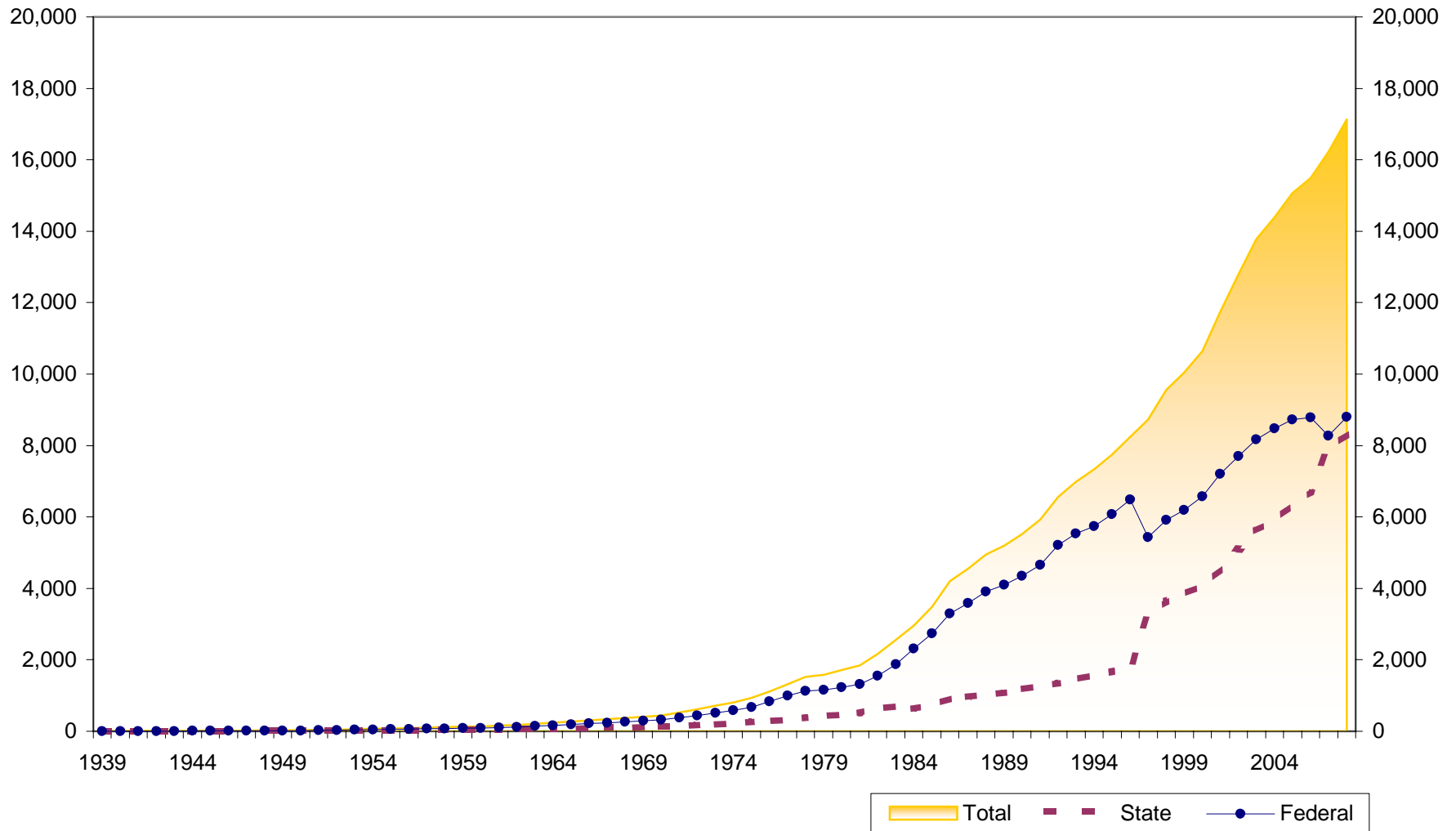
Number of Members at Indiana Credit Unions 1939-2008



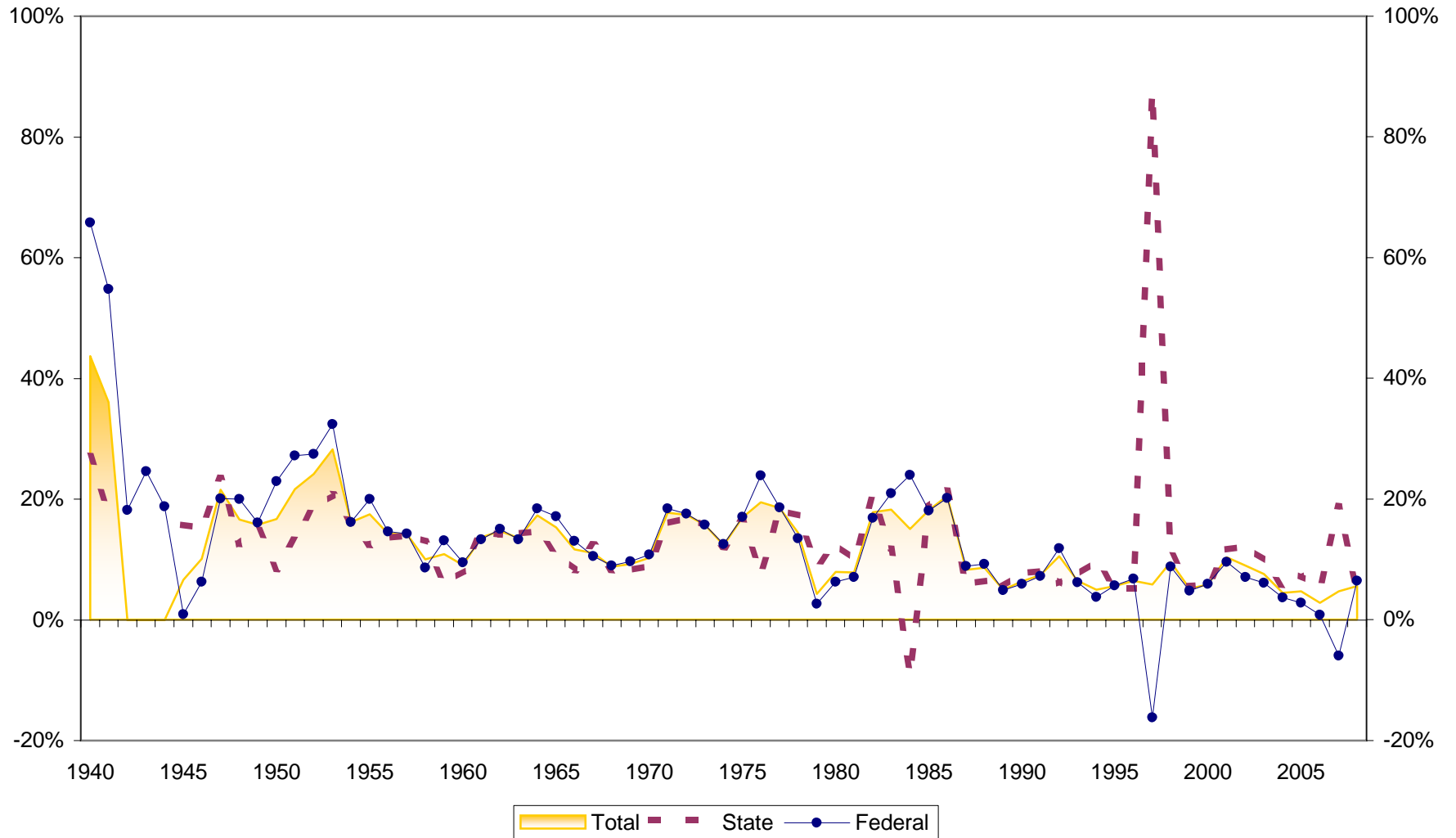
Membership Growth at Indiana Credit Unions 1940-2008



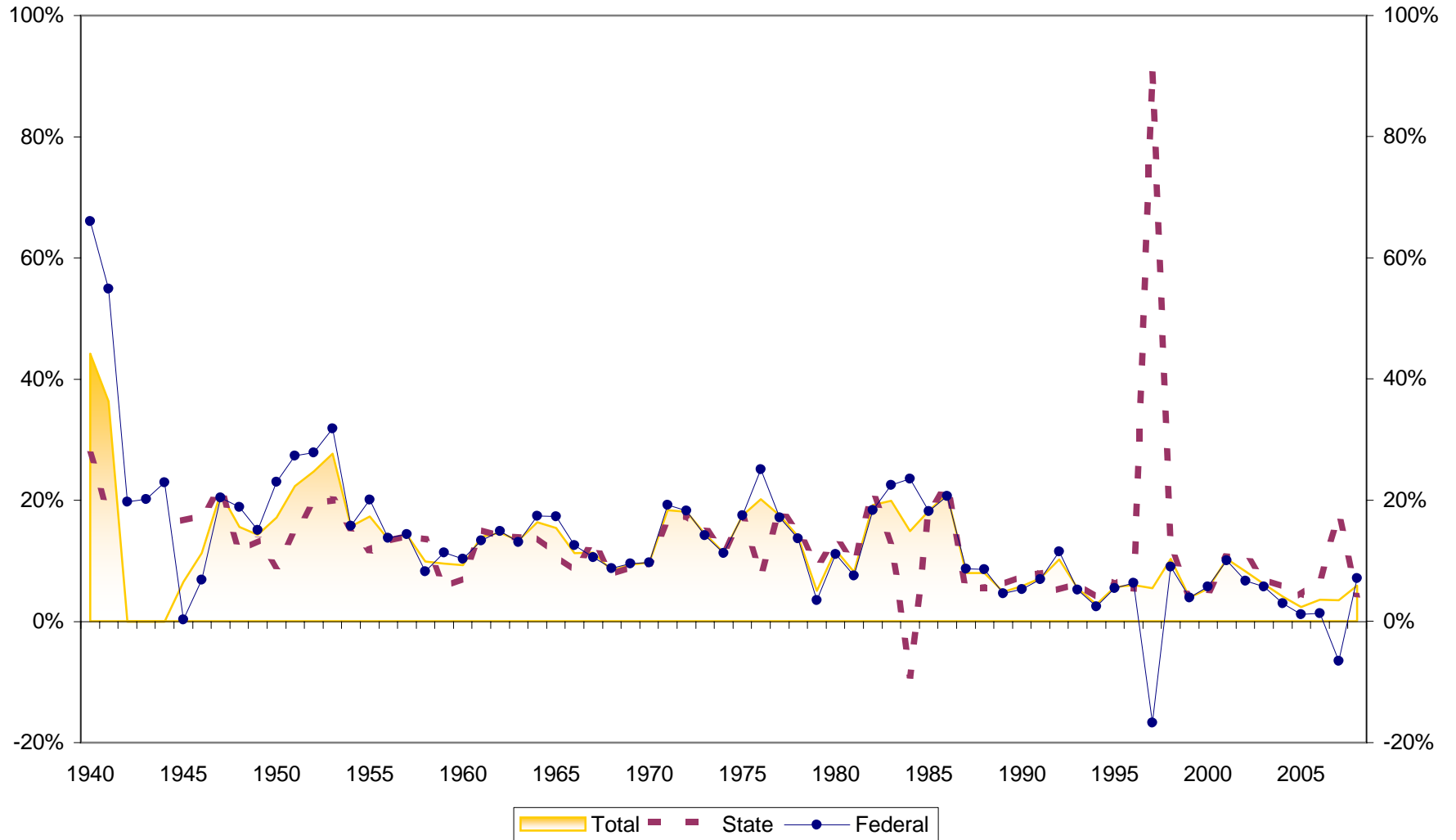
Assets at Indiana Credit Unions (in \$Millions) 1939-2008



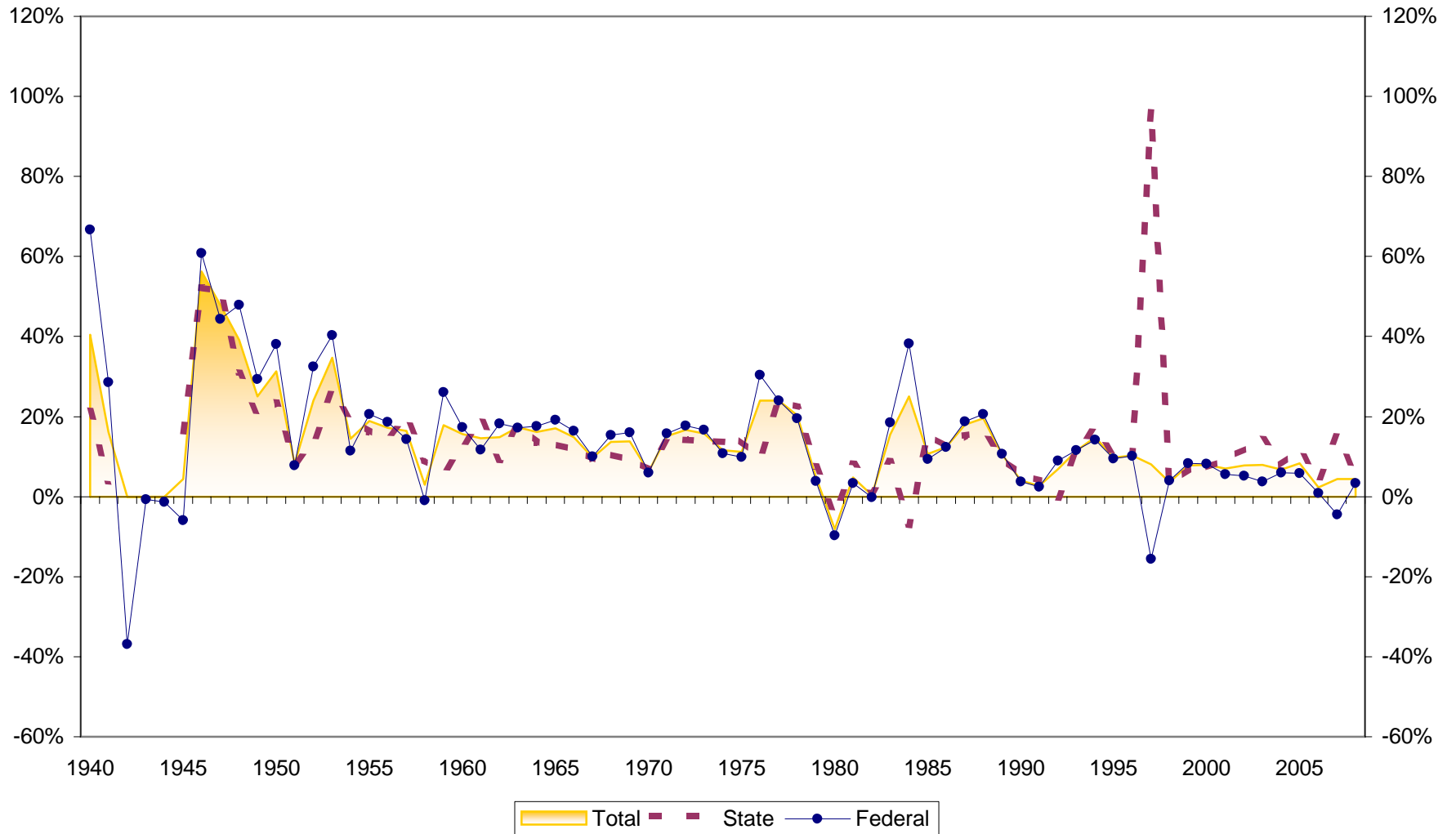
Asset Growth at Indiana Credit Unions 1940-2008



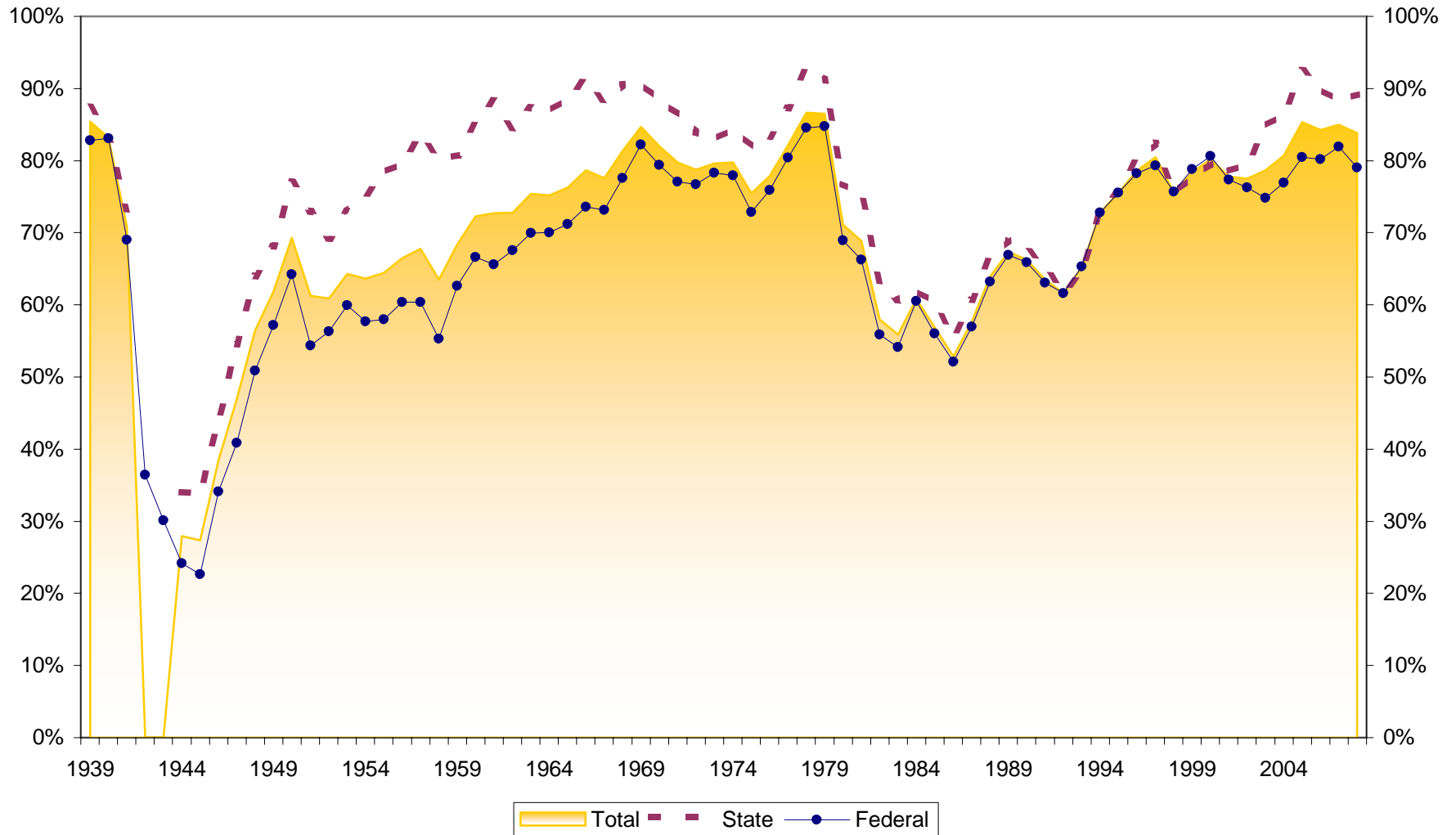
Savings Growth at Indiana Credit Unions 1940-2008



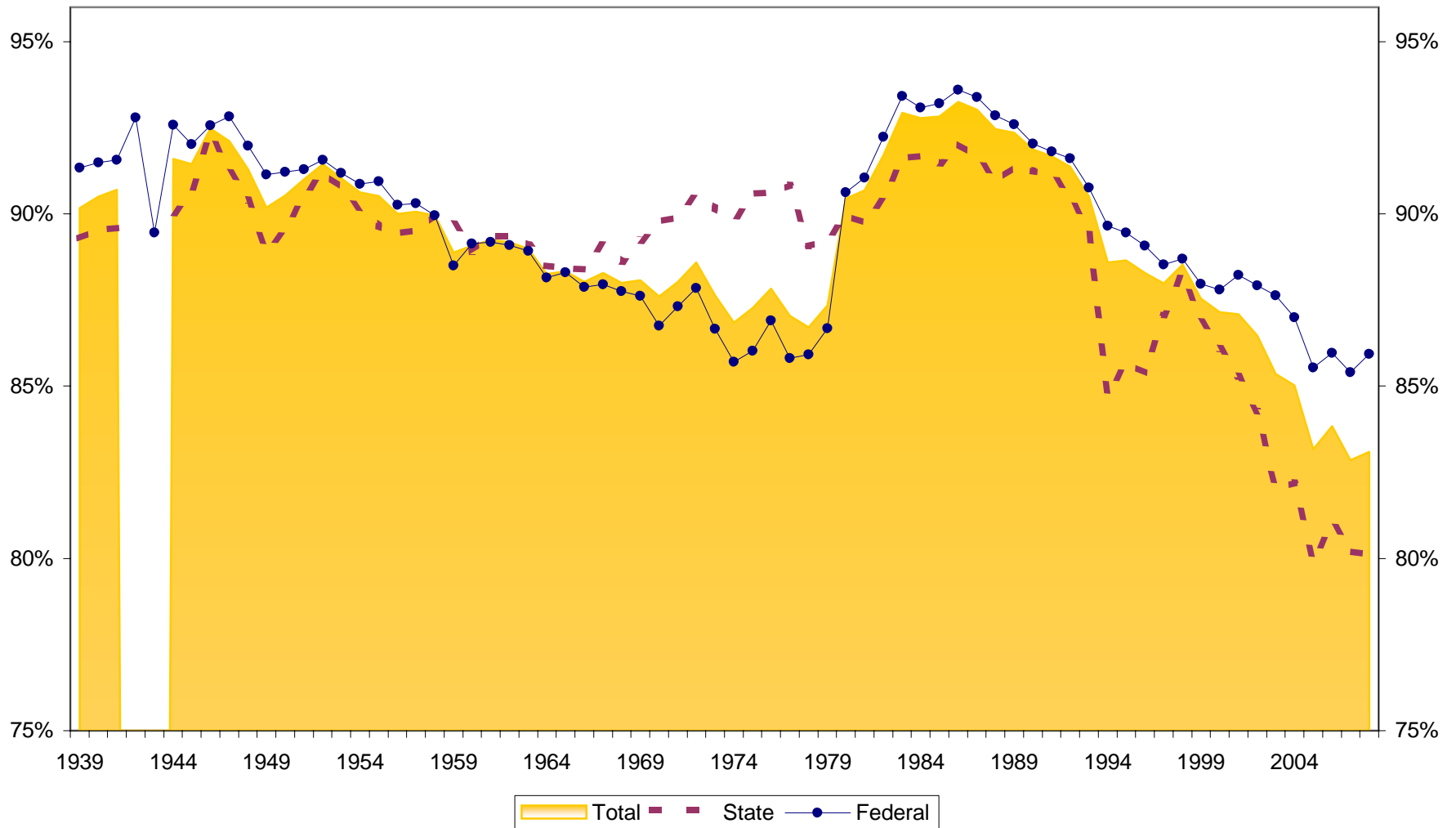
Loan Growth at Indiana Credit Unions 1940-2008



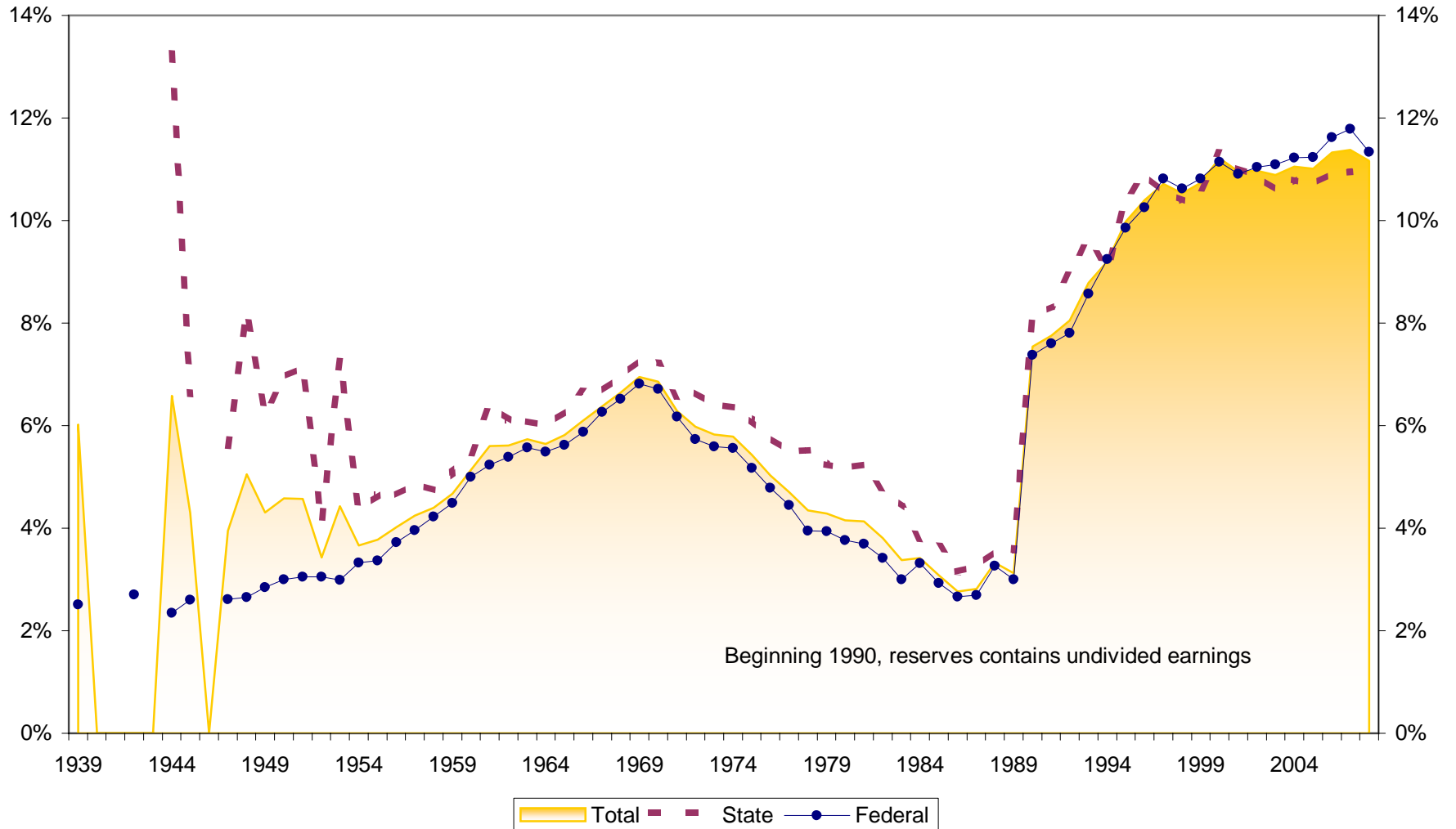
Loans to Savings at Indiana Credit Unions 1940-2008



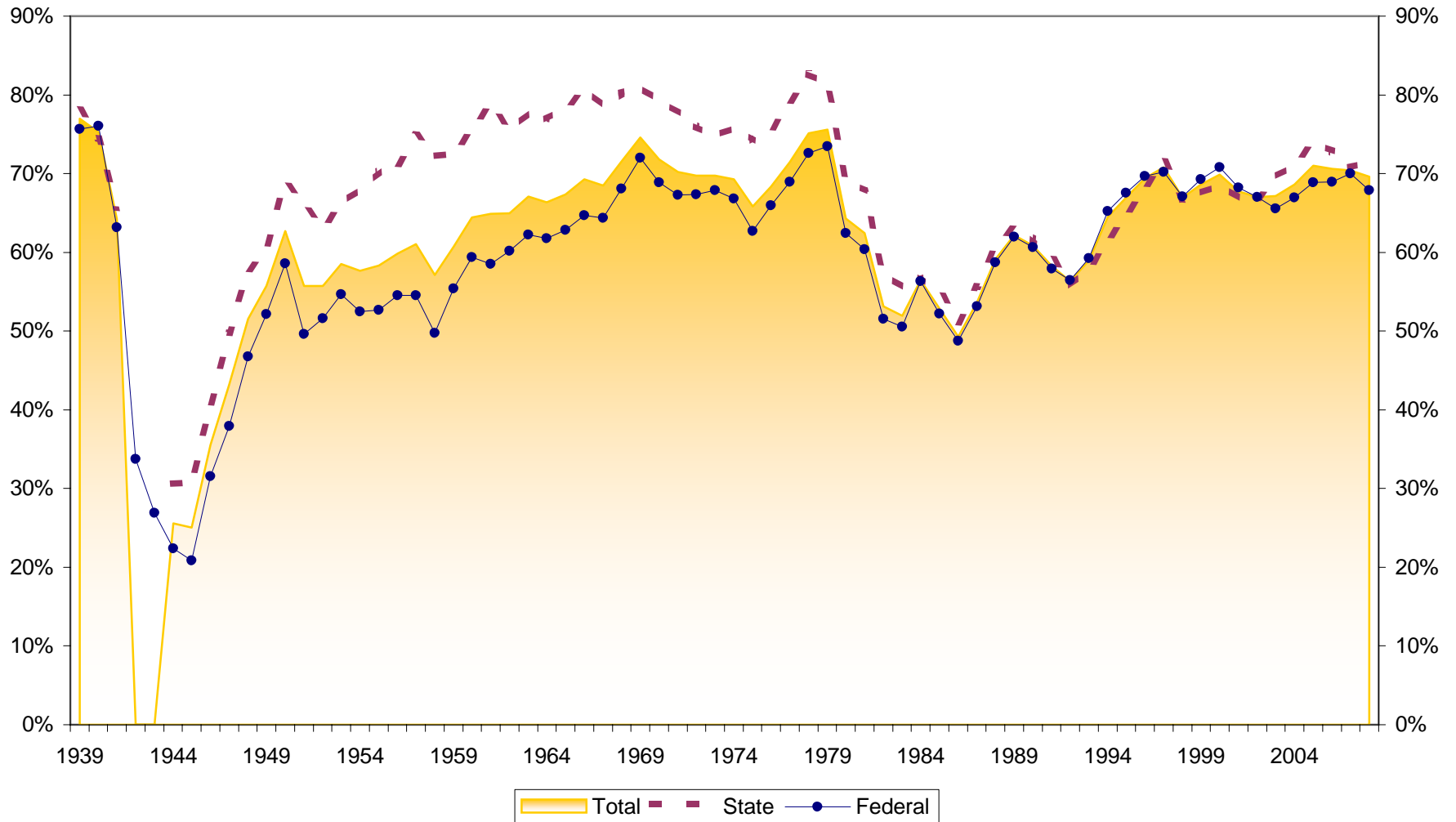
Savings to Assets at Indiana Credit Unions 1940-2008



Reserves to Assets at Indiana Credit Unions 1940-2008



Loans to Assets at Indiana Credit Unions 1940-2008



Dollar Asset Growth at Indiana Credit Unions (in \$Millions) 1939-2008

