

Delaware Total Statistics

| Year | # of CUs | # of Members | Savings (\$) | Loans (\$) | Reserves (\$)* | Assets (\$) |
|-------------|-----------------|---------------------|---------------------|-------------------|-----------------------|--------------------|
| 1939 | 11 | 2,418 | 78,276 | 71,092 | 2,475 | 85,704 |
| 1940 | 12 | 2,542 | 120,000 | 101,903 | | 132,000 |
| 1941 | 11 | 3,200 | 178,830 | 148,763 | | 198,000 |
| 1942 | 11 | 2,811 | 174,991 | 89,739 | 8,140 | 192,971 |
| 1943 | 10 | 2,291 | 174,942 | 62,775 | | |
| 1944 | 9 | 2,114 | 161,965 | 67,574 | 9,056 | 176,276 |
| 1945 | 9 | 2,126 | 177,527 | 71,371 | 9,824 | 192,605 |
| 1946 | 9 | 2,361 | 216,584 | 102,161 | 11,574 | 232,991 |
| 1947 | 9 | 2,609 | 281,941 | 175,537 | 14,414 | 305,096 |
| 1948 | 10 | 2,979 | 368,385 | 273,438 | 18,434 | 412,112 |
| 1949 | 10 | 3,349 | 482,987 | 385,852 | 21,264 | 537,044 |
| 1950 | 8 | 3,830 | 667,467 | 592,269 | 26,692 | 734,821 |
| 1951 | 7 | 4,352 | 830,653 | 635,607 | 33,606 | 908,599 |
| 1952 | 10 | 5,359 | 1,045,712 | 877,283 | 43,392 | 1,130,218 |
| 1953 | 10 | 5,784 | 1,345,163 | 1,256,963 | 55,846 | 1,465,095 |
| 1954 | 13 | 6,564 | 1,634,159 | 1,424,581 | 66,587 | 1,780,418 |
| 1955 | 15 | 7,317 | 1,910,440 | 1,721,935 | 84,560 | 2,095,775 |
| 1956 | 18 | 8,495 | 2,239,239 | 1,947,765 | 104,340 | 2,497,131 |
| 1957 | 21 | 9,685 | 2,708,530 | 2,453,536 | 136,015 | 3,021,196 |
| 1958 | 28 | 11,005 | 3,148,110 | 2,882,731 | 170,007 | 3,572,920 |
| 1959 | 33 | 14,205 | 3,939,221 | 3,641,874 | 204,310 | 4,409,986 |
| 1960 | 39 | 18,262 | 5,223,762 | 5,079,748 | 268,402 | 5,938,789 |
| 1961 | 40 | 21,946 | 6,715,604 | 6,402,525 | 341,801 | 7,697,489 |
| 1962 | 41 | 25,035 | 8,289,100 | 8,025,379 | 414,484 | 9,515,917 |
| 1963 | 53 | 30,500 | 10,631,269 | 9,919,443 | 499,848 | 12,013,554 |
| 1964 | 58 | 36,367 | 13,875,000 | 12,391,000 | 638,000 | 15,631,000 |
| 1965 | 60 | 40,322 | 17,313,000 | 15,903,000 | 845,000 | 19,638,000 |
| 1966 | 66 | 47,033 | 20,242,000 | 19,114,000 | 1,113,000 | 23,428,000 |
| 1967 | 69 | 52,706 | 23,571,000 | 22,225,000 | 1,394,000 | 27,509,000 |
| 1968 | 74 | 57,448 | 28,044,000 | 27,101,000 | 1,777,000 | 32,150,000 |
| 1969 | 79 | 61,148 | 33,520,000 | 32,725,000 | 2,164,000 | 38,513,000 |
| 1970 | 80 | 64,633 | 40,515,000 | 37,775,000 | 2,683,000 | 46,095,000 |
| 1971 | 80 | 73,895 | 48,624,000 | 44,504,000 | 3,009,000 | 54,611,000 |
| 1972 | 82 | 75,757 | 56,514,000 | 50,288,000 | 3,534,000 | 63,457,000 |
| 1973 | 82 | 77,787 | 64,650,000 | 59,624,000 | 4,186,000 | 74,276,000 |
| 1974 | 84 | 82,715 | 71,906,000 | 66,374,000 | 4,776,000 | 83,212,000 |
| 1975 | 81 | 82,927 | 84,935,972 | 73,256,099 | 5,312,000 | 96,461,501 |
| 1976 | 75 | 85,282 | 99,816,000 | 86,191,000 | 5,956,000 | 112,014,000 |
| 1977 | 73 | 89,238 | 116,258,000 | 102,799,000 | 6,737,000 | 130,660,000 |
| 1978 | 74 | 99,855 | 131,171,000 | 119,157,000 | 7,196,000 | 148,564,000 |
| 1979 | 74 | 96,308 | 132,838,000 | 120,551,000 | 7,803,000 | 152,659,000 |
| 1980 | 73 | 105,611 | 142,582,000 | 110,647,000 | 8,353,000 | 156,264,000 |
| 1981 | 72 | 109,447 | 141,626,000 | 111,530,000 | 9,037,000 | 158,485,000 |
| 1982 | 72 | 113,984 | 164,756,000 | 112,756,000 | 9,874,000 | 180,594,000 |
| 1983 | 69 | 113,974 | 195,700,000 | 137,500,000 | 10,882,000 | 213,900,000 |
| 1984 | 66 | 118,210 | 214,401,934 | 170,635,460 | 13,651,057 | 236,892,675 |
| 1985 | 64 | 124,561 | 255,005,459 | 189,165,463 | 16,414,595 | 279,706,106 |
| 1986 | 63 | 123,918 | 325,350,001 | 219,936,799 | 18,661,078 | 352,709,346 |
| 1987 | 61 | 134,321 | 376,718,026 | 268,757,517 | 19,724,261 | 407,668,939 |
| 1988 | 59 | 135,871 | 404,559,112 | 307,801,627 | 25,798,528 | 442,575,558 |
| 1989 | 56 | 139,881 | 420,879,807 | 333,610,420 | 27,192,286 | 461,950,577 |
| 1990 | 55 | 143,091 | 462,768,560 | 345,004,780 | 40,960,527 | 508,311,089 |
| 1991 | 54 | 144,123 | 534,178,235 | 349,993,540 | 44,505,009 | 582,878,443 |
| 1992 | 52 | 144,407 | 585,431,152 | 360,574,749 | 51,161,228 | 642,209,990 |
| 1993 | 51 | 147,004 | 616,996,930 | 371,902,661 | 59,876,043 | 679,709,322 |
| 1994 | 50 | 156,572 | 626,749,968 | 424,622,273 | 66,994,208 | 701,446,658 |
| 1995 | 50 | 166,036 | 648,673,593 | 451,874,196 | 72,880,156 | 727,089,928 |
| 1996 | 48 | 173,649 | 682,778,808 | 477,108,855 | 80,212,831 | 768,828,396 |
| 1997 | 47 | 173,974 | 718,035,316 | 509,585,042 | 88,268,519 | 812,299,567 |
| 1998 | 45 | 177,306 | 782,381,731 | 552,001,946 | 95,330,491 | 883,617,668 |
| 1999 | 42 | 185,837 | 845,852,850 | 602,767,427 | 99,214,299 | 953,851,894 |
| 2000 | 41 | 194,877 | 860,588,901 | 663,872,954 | 111,172,207 | 985,021,765 |
| 2001 | 40 | 200,910 | 972,382,952 | 663,678,872 | 123,112,396 | 1,104,185,840 |
| 2002 | 40 | 207,600 | 1,094,406,004 | 652,359,046 | 134,373,099 | 1,235,617,426 |
| 2003 | 39 | 213,714 | 1,185,624,743 | 664,466,800 | 138,425,678 | 1,330,715,334 |
| 2004 | 36 | 216,218 | 1,218,964,299 | 729,784,175 | 150,095,997 | 1,377,515,964 |
| 2005 | 33 | 221,613 | 1,205,770,433 | 810,059,029 | 167,712,407 | 1,385,129,297 |
| 2006 | 33 | 221,613 | 1,205,770,433 | 810,059,029 | 167,712,407 | 1,385,129,297 |
| 2007 | 33 | 216,675 | 1,230,097,742 | 834,846,341 | 180,906,174 | 1,421,264,163 |
| 2008 | 30 | 214,525 | 1,257,258,517 | 817,059,586 | 180,318,180 | 1,448,974,728 |

* Beginning 1990, Reserves includes undivided earnings.

Delaware State Statistics

| Year | # of CUs | # of Members | Savings (\$) | Loans (\$) | Reserves (\$)* | Assets (\$) |
|-------------|-----------------|---------------------|---------------------|-------------------|-----------------------|--------------------|
| 1939 | 0 | 0 | 0 | 0 | 0 | 0 |
| 1940 | 0 | 0 | 0 | 0 | 0 | 0 |
| 1941 | 0 | 0 | 0 | 0 | 0 | 0 |
| 1942 | 0 | 0 | 0 | 0 | 0 | 0 |
| 1943 | 0 | 0 | 0 | 0 | 0 | 0 |
| 1944 | 0 | 0 | 0 | 0 | 0 | 0 |
| 1945 | 0 | 0 | 0 | 0 | 0 | 0 |
| 1946 | 0 | 0 | 0 | 0 | 0 | 0 |
| 1947 | 0 | 0 | 0 | 0 | 0 | 0 |
| 1948 | 0 | 0 | 0 | 0 | 0 | 0 |
| 1949 | 0 | 0 | 0 | 0 | 0 | 0 |
| 1950 | 0 | 0 | 0 | 0 | 0 | 0 |
| 1951 | 0 | 0 | 0 | 0 | 0 | 0 |
| 1952 | 0 | 0 | 0 | 0 | 0 | 0 |
| 1953 | 0 | 0 | 0 | 0 | 0 | 0 |
| 1954 | 0 | 0 | 0 | 0 | 0 | 0 |
| 1955 | 0 | 0 | 0 | 0 | 0 | 0 |
| 1956 | 0 | 0 | 0 | 0 | 0 | 0 |
| 1957 | 0 | 0 | 0 | 0 | 0 | 0 |
| 1958 | 0 | 0 | 0 | 0 | 0 | 0 |
| 1959 | 0 | 0 | 0 | 0 | 0 | 0 |
| 1960 | 0 | 0 | 0 | 0 | 0 | 0 |
| 1961 | 0 | 0 | 0 | 0 | 0 | 0 |
| 1962 | 0 | 0 | 0 | 0 | 0 | 0 |
| 1963 | 0 | 0 | 0 | 0 | 0 | 0 |
| 1964 | 0 | 0 | 0 | 0 | 0 | 0 |
| 1965 | 0 | 0 | 0 | 0 | 0 | 0 |
| 1966 | 0 | 0 | 0 | 0 | 0 | 0 |
| 1967 | 0 | 0 | 0 | 0 | 0 | 0 |
| 1968 | 0 | 0 | 0 | 0 | 0 | 0 |
| 1969 | 0 | 0 | 0 | 0 | 0 | 0 |
| 1970 | 0 | 0 | 0 | 0 | 0 | 0 |
| 1971 | 0 | 0 | 0 | 0 | 0 | 0 |
| 1972 | 0 | 0 | 0 | 0 | 0 | 0 |
| 1973 | 0 | 0 | 0 | 0 | 0 | 0 |
| 1974 | 0 | 0 | 0 | 0 | 0 | 0 |
| 1975 | 0 | 0 | 0 | 0 | 0 | 0 |
| 1976 | 0 | 0 | 0 | 0 | 0 | 0 |
| 1977 | 0 | 0 | 0 | 0 | 0 | 0 |
| 1978 | 0 | 0 | 0 | 0 | 0 | 0 |
| 1979 | 0 | 0 | 0 | 0 | 0 | 0 |
| 1980 | 0 | 0 | 0 | 0 | 0 | 0 |
| 1981 | 0 | 0 | 0 | 0 | 0 | 0 |
| 1982 | 0 | 0 | 0 | 0 | 0 | 0 |
| 1983 | 0 | 0 | 0 | 0 | 0 | 0 |
| 1984 | 0 | 0 | 0 | 0 | 0 | 0 |
| 1985 | 0 | 0 | 0 | 0 | 0 | 0 |
| 1986 | 0 | 0 | 0 | 0 | 0 | 0 |
| 1987 | 0 | 0 | 0 | 0 | 0 | 0 |
| 1988 | 0 | 0 | 0 | 0 | 0 | 0 |
| 1989 | 0 | 0 | 0 | 0 | 0 | 0 |
| 1990 | 0 | 0 | 0 | 0 | 0 | 0 |
| 1991 | 0 | 0 | 0 | 0 | 0 | 0 |
| 1992 | 0 | 0 | 0 | 0 | 0 | 0 |
| 1993 | 0 | 0 | 0 | 0 | 0 | 0 |
| 1994 | 0 | 0 | 0 | 0 | 0 | 0 |
| 1995 | 0 | 0 | 0 | 0 | 0 | 0 |
| 1996 | 0 | 0 | 0 | 0 | 0 | 0 |
| 1997 | 0 | 0 | 0 | 0 | 0 | 0 |
| 1998 | 0 | 0 | 0 | 0 | 0 | 0 |
| 1999 | 0 | 0 | 0 | 0 | 0 | 0 |
| 2000 | 0 | 0 | 0 | 0 | 0 | 0 |
| 2001 | 0 | 0 | 0 | 0 | 0 | 0 |
| 2002 | 0 | 0 | 0 | 0 | 0 | 0 |
| 2003 | 0 | 0 | 0 | 0 | 0 | 0 |
| 2004 | 0 | 0 | 0 | 0 | 0 | 0 |
| 2005 | 0 | 0 | 0 | 0 | 0 | 0 |
| 2006 | 0 | 0 | 0 | 0 | 0 | 0 |
| 2007 | 0 | 0 | 0 | 0 | 0 | 0 |
| 2008 | 0 | 0 | 0 | 0 | 0 | 0 |

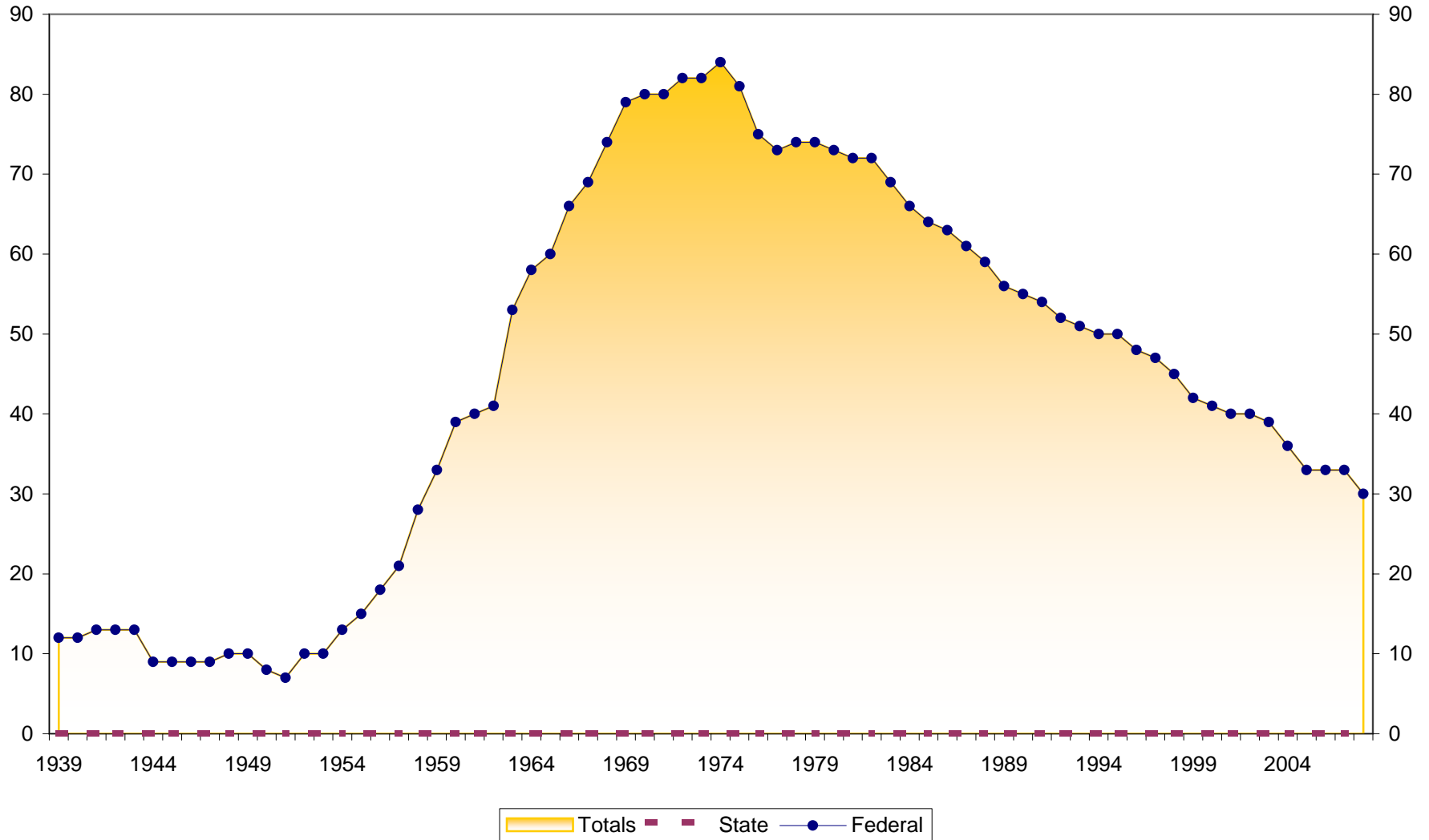
* Beginning 1990, Reserves includes undivided earnings.

Delaware Federal Statistics

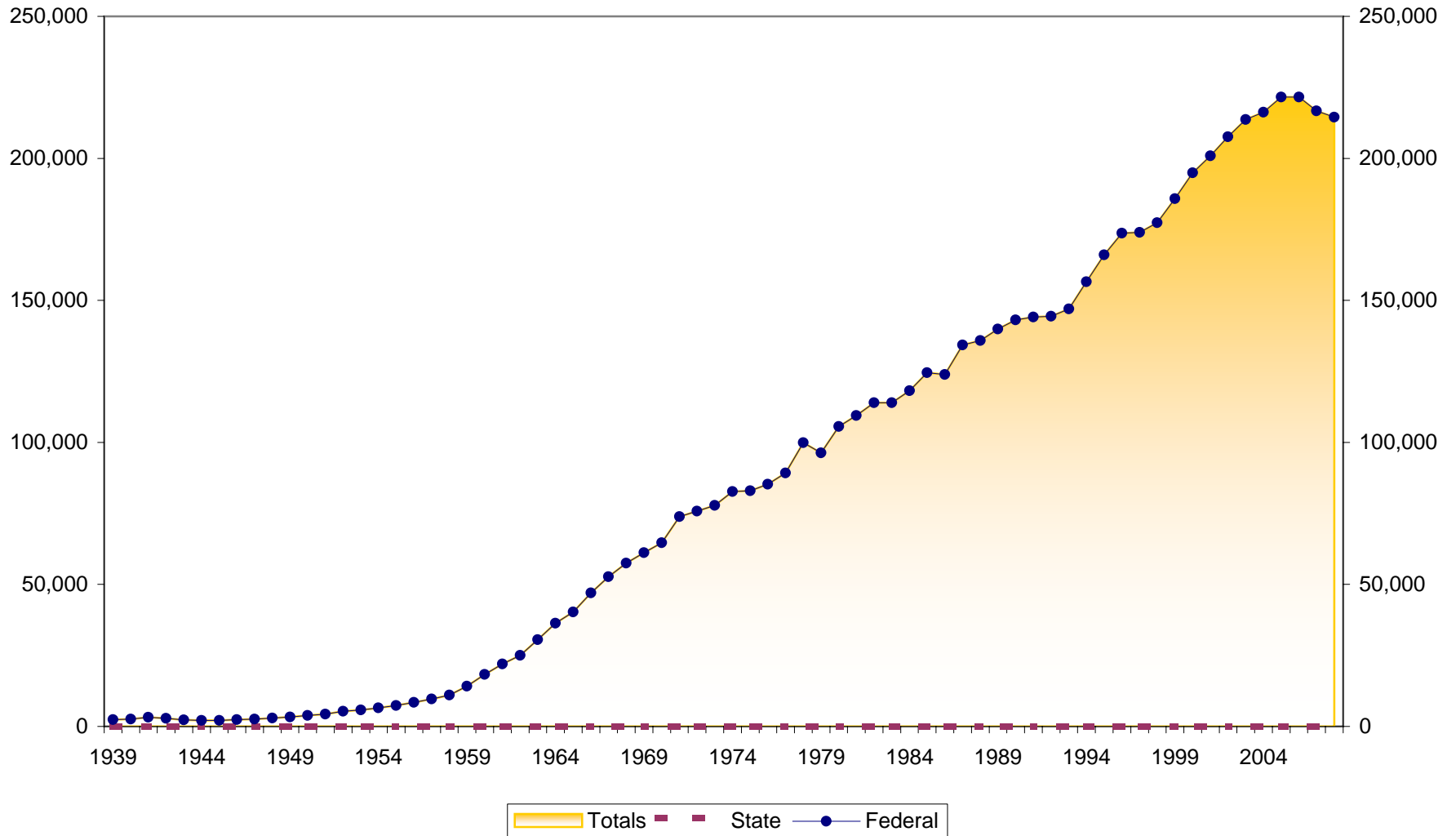
| Year | # of CUs | # of Members | Savings (\$) | Loans (\$) | Reserves (\$)* | Assets (\$) |
|-------------|-----------------|---------------------|---------------------|-------------------|-----------------------|--------------------|
| 1939 | 12 | 2,418 | 78,276 | 71,092 | 2,475 | 85,704 |
| 1940 | 12 | 2,542 | 120,000 | 101,903 | | 132,000 |
| 1941 | 13 | 3,200 | 178,830 | 148,763 | | 198,000 |
| 1942 | 13 | 2,811 | 174,991 | 89,739 | 8,140 | 192,971 |
| 1943 | 13 | 2,291 | 174,942 | 62,775 | | |
| 1944 | 9 | 2,114 | 161,965 | 67,574 | 9,056 | 176,276 |
| 1945 | 9 | 2,126 | 177,527 | 71,371 | 9,824 | 192,605 |
| 1946 | 9 | 2,361 | 216,584 | 102,161 | 11,574 | 232,991 |
| 1947 | 9 | 2,609 | 281,941 | 175,537 | 14,414 | 305,096 |
| 1948 | 10 | 2,979 | 368,385 | 273,438 | 18,434 | 412,112 |
| 1949 | 10 | 3,349 | 482,987 | 385,852 | 21,264 | 537,044 |
| 1950 | 8 | 3,830 | 667,467 | 592,269 | 26,692 | 734,821 |
| 1951 | 7 | 4,352 | 830,653 | 635,607 | 33,606 | 908,599 |
| 1952 | 10 | 5,359 | 1,045,712 | 877,283 | 43,392 | 1,130,218 |
| 1953 | 10 | 5,784 | 1,345,163 | 1,256,963 | 55,846 | 1,465,095 |
| 1954 | 13 | 6,564 | 1,634,159 | 1,424,581 | 66,587 | 1,780,418 |
| 1955 | 15 | 7,317 | 1,910,440 | 1,721,935 | 84,560 | 2,095,775 |
| 1956 | 18 | 8,495 | 2,239,239 | 1,947,765 | 104,340 | 2,497,131 |
| 1957 | 21 | 9,685 | 2,708,530 | 2,453,536 | 136,015 | 3,021,196 |
| 1958 | 28 | 11,005 | 3,148,110 | 2,882,731 | 170,007 | 3,572,920 |
| 1959 | 33 | 14,205 | 3,939,221 | 3,641,874 | 204,310 | 4,409,986 |
| 1960 | 39 | 18,262 | 5,223,762 | 5,079,748 | 268,402 | 5,938,789 |
| 1961 | 40 | 21,946 | 6,715,604 | 6,402,525 | 341,801 | 7,697,489 |
| 1962 | 41 | 25,035 | 8,289,100 | 8,025,379 | 414,484 | 9,515,917 |
| 1963 | 53 | 30,500 | 10,631,269 | 9,919,443 | 499,848 | 12,013,554 |
| 1964 | 58 | 36,367 | 13,875,000 | 12,391,000 | 638,000 | 15,631,000 |
| 1965 | 60 | 40,322 | 17,313,000 | 15,903,000 | 845,000 | 19,638,000 |
| 1966 | 66 | 47,033 | 20,242,000 | 19,114,000 | 1,113,000 | 23,428,000 |
| 1967 | 69 | 52,706 | 23,571,000 | 22,225,000 | 1,394,000 | 27,509,000 |
| 1968 | 74 | 57,448 | 28,044,000 | 27,101,000 | 1,777,000 | 32,150,000 |
| 1969 | 79 | 61,148 | 33,520,000 | 32,725,000 | 2,164,000 | 38,513,000 |
| 1970 | 80 | 64,633 | 40,515,000 | 37,775,000 | 2,683,000 | 46,095,000 |
| 1971 | 80 | 73,895 | 48,624,000 | 44,504,000 | 3,009,000 | 54,611,000 |
| 1972 | 82 | 75,757 | 56,514,000 | 50,288,000 | 3,534,000 | 63,457,000 |
| 1973 | 82 | 77,787 | 64,650,000 | 59,624,000 | 4,186,000 | 74,276,000 |
| 1974 | 84 | 82,715 | 71,906,000 | 66,374,000 | 4,776,000 | 83,212,000 |
| 1975 | 81 | 82,927 | 84,935,972 | 73,256,099 | 5,312,000 | 96,461,501 |
| 1976 | 75 | 85,282 | 99,816,000 | 86,191,000 | 5,956,000 | 112,014,000 |
| 1977 | 73 | 89,238 | 116,258,000 | 102,799,000 | 6,737,000 | 130,660,000 |
| 1978 | 74 | 99,855 | 131,171,000 | 119,157,000 | 7,196,000 | 148,564,000 |
| 1979 | 74 | 96,308 | 132,838,000 | 120,551,000 | 7,803,000 | 152,659,000 |
| 1980 | 73 | 105,611 | 142,582,000 | 110,647,000 | 8,353,000 | 156,264,000 |
| 1981 | 72 | 109,447 | 141,626,000 | 111,530,000 | 9,037,000 | 158,485,000 |
| 1982 | 72 | 113,984 | 164,756,000 | 112,756,000 | 9,874,000 | 180,594,000 |
| 1983 | 69 | 113,974 | 195,700,000 | 137,500,000 | 10,882,000 | 213,900,000 |
| 1984 | 66 | 118,210 | 214,401,934 | 170,635,460 | 13,651,057 | 236,892,675 |
| 1985 | 64 | 124,561 | 255,005,459 | 189,165,463 | 16,414,595 | 279,706,106 |
| 1986 | 63 | 123,918 | 325,350,001 | 219,936,799 | 18,661,078 | 352,709,346 |
| 1987 | 61 | 134,321 | 376,718,026 | 268,757,517 | 19,724,261 | 407,668,939 |
| 1988 | 59 | 135,871 | 404,559,112 | 307,801,627 | 25,798,528 | 442,575,558 |
| 1989 | 56 | 139,881 | 420,879,807 | 333,610,420 | 27,192,286 | 461,950,577 |
| 1990 | 55 | 143,091 | 462,768,560 | 345,004,780 | 40,960,527 | 508,311,089 |
| 1991 | 54 | 144,123 | 534,178,235 | 349,993,540 | 44,505,009 | 582,878,443 |
| 1992 | 52 | 144,407 | 585,431,152 | 360,574,749 | 51,161,228 | 642,209,990 |
| 1993 | 51 | 147,004 | 616,996,930 | 371,902,661 | 59,876,043 | 679,709,322 |
| 1994 | 50 | 156,572 | 626,749,968 | 424,622,273 | 66,994,208 | 701,446,658 |
| 1995 | 50 | 166,036 | 648,673,593 | 451,874,196 | 72,880,156 | 727,089,928 |
| 1996 | 48 | 173,649 | 682,778,808 | 477,108,855 | 80,212,831 | 768,828,396 |
| 1997 | 47 | 173,974 | 718,035,316 | 509,585,042 | 88,268,519 | 812,299,567 |
| 1998 | 45 | 177,306 | 782,381,731 | 552,001,946 | 95,330,491 | 883,617,668 |
| 1999 | 42 | 185,837 | 845,852,850 | 602,767,427 | 99,214,299 | 953,851,894 |
| 2000 | 41 | 194,877 | 860,588,901 | 663,872,954 | 111,172,207 | 985,021,765 |
| 2001 | 40 | 200,910 | 972,382,952 | 663,678,872 | 123,112,396 | 1,104,185,840 |
| 2002 | 40 | 207,600 | 1,094,406,004 | 652,359,046 | 134,373,099 | 1,235,617,426 |
| 2003 | 39 | 213,714 | 1,185,624,743 | 664,466,800 | 138,425,678 | 1,330,715,334 |
| 2004 | 36 | 216,218 | 1,218,964,299 | 729,784,175 | 150,095,997 | 1,377,515,964 |
| 2005 | 33 | 221,613 | 1,205,770,433 | 810,059,029 | 167,712,407 | 1,385,129,297 |
| 2006 | 33 | 221,613 | 1,205,770,433 | 810,059,029 | 167,712,407 | 1,385,129,297 |
| 2007 | 33 | 216,675 | 1,230,097,742 | 834,846,341 | 180,906,174 | 1,421,264,163 |
| 2008 | 30 | 214,525 | 1,257,258,517 | 817,059,586 | 180,318,180 | 1,448,974,728 |

* Beginning 1990, Reserves includes undivided earnings.

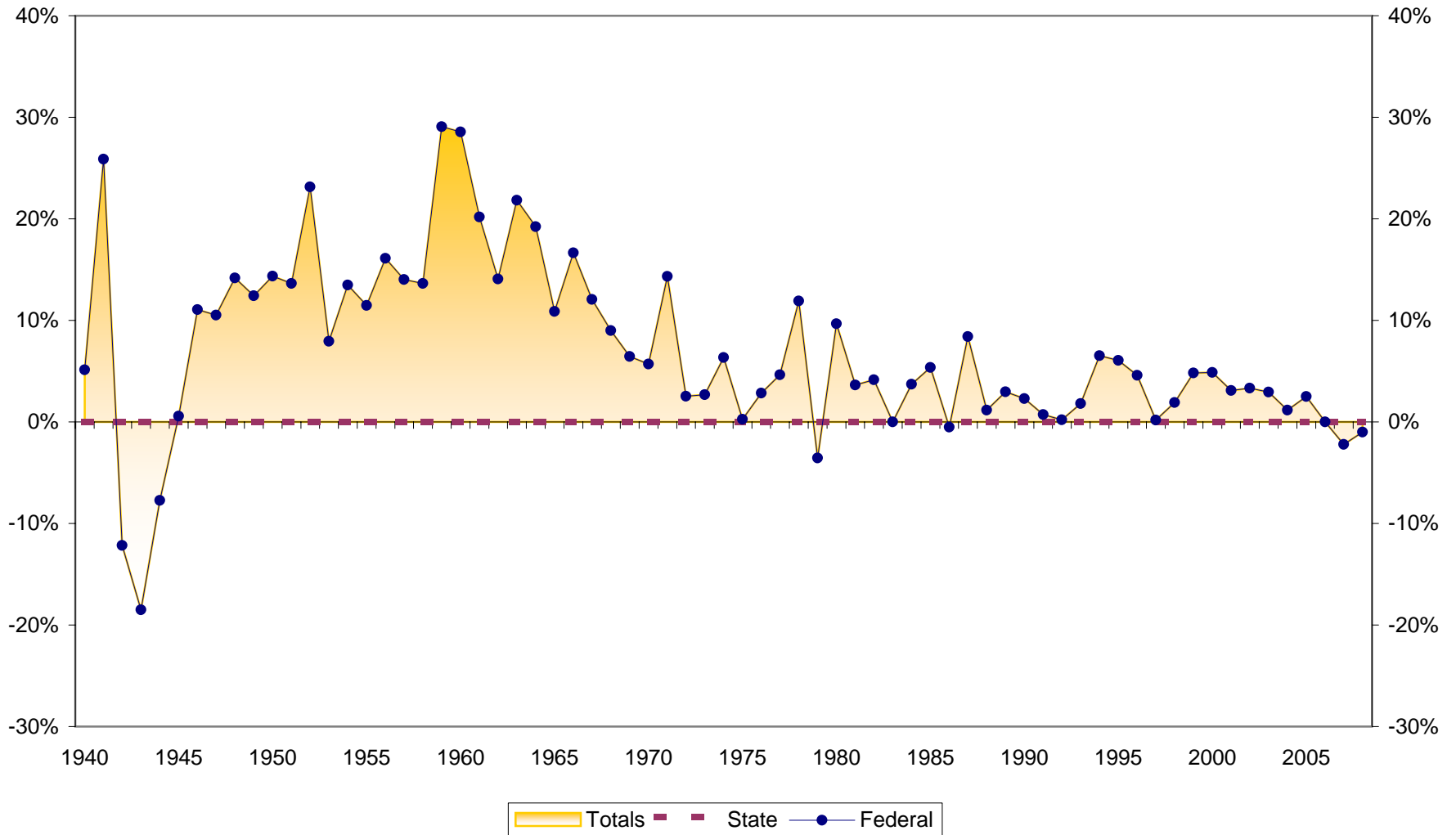
Number of Delaware Credit Unions 1939-2008



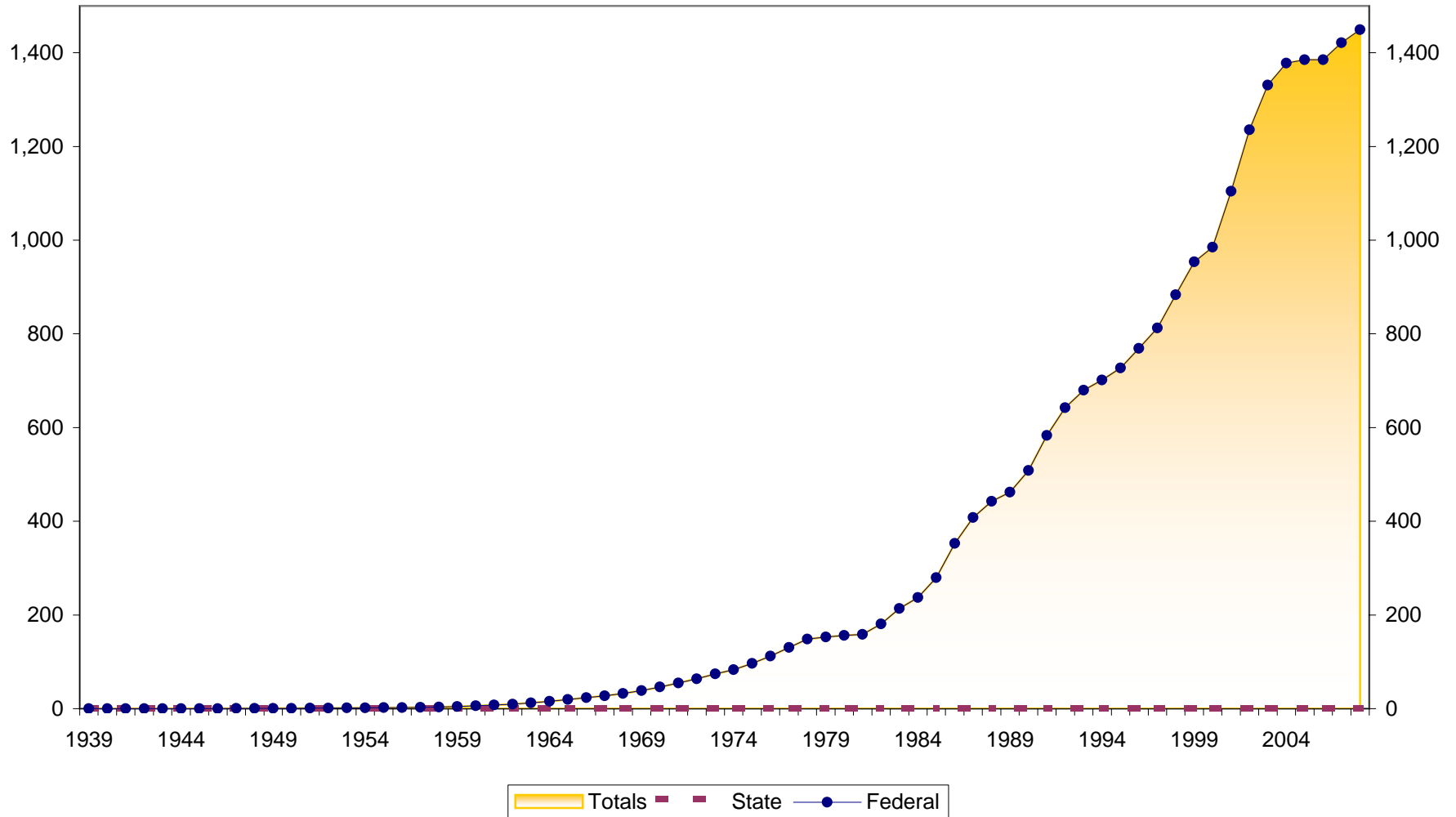
Number of Members at Delaware Credit Unions 1939-2008



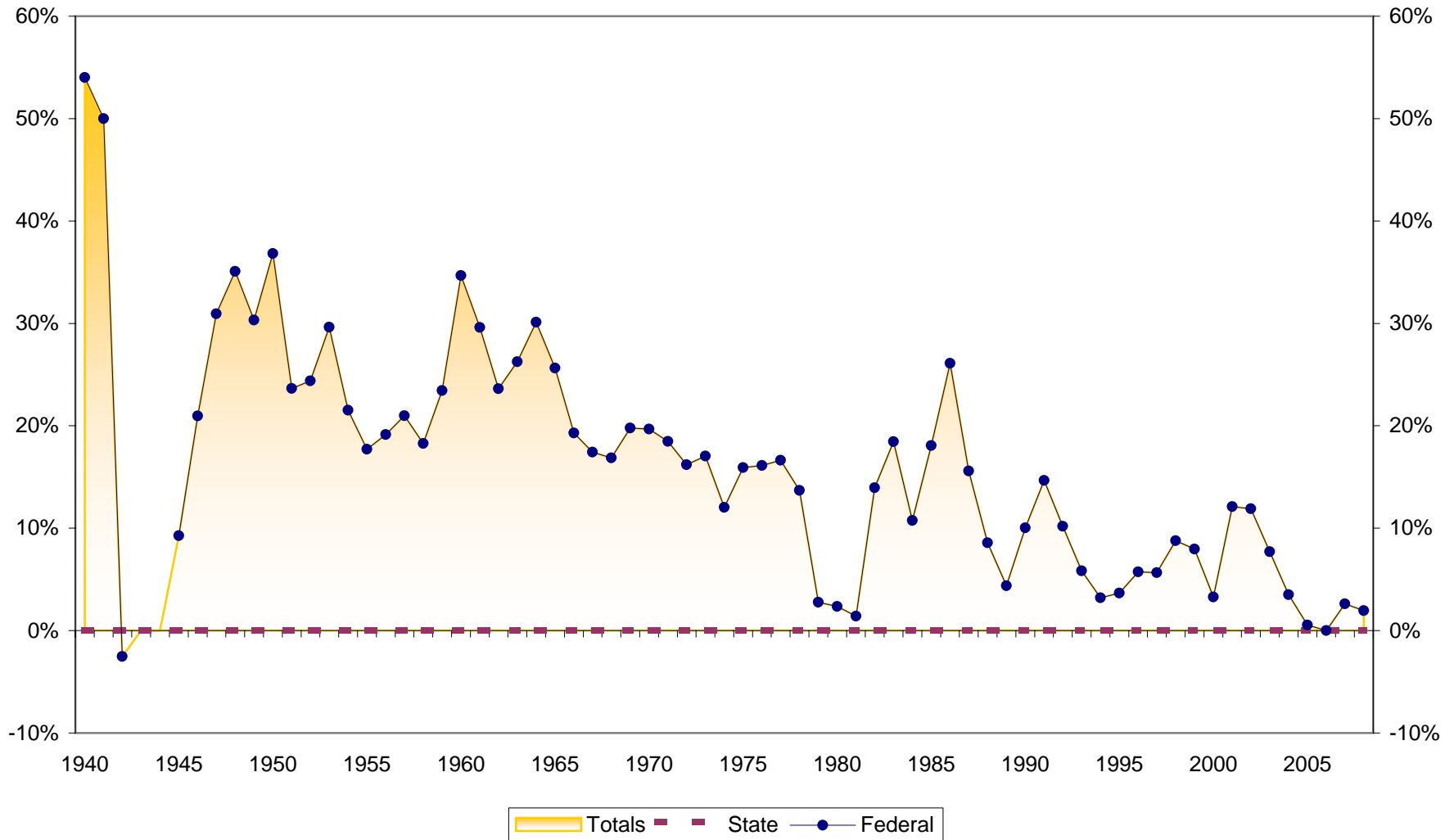
Membership Growth at Delaware Credit Unions 1940-2008



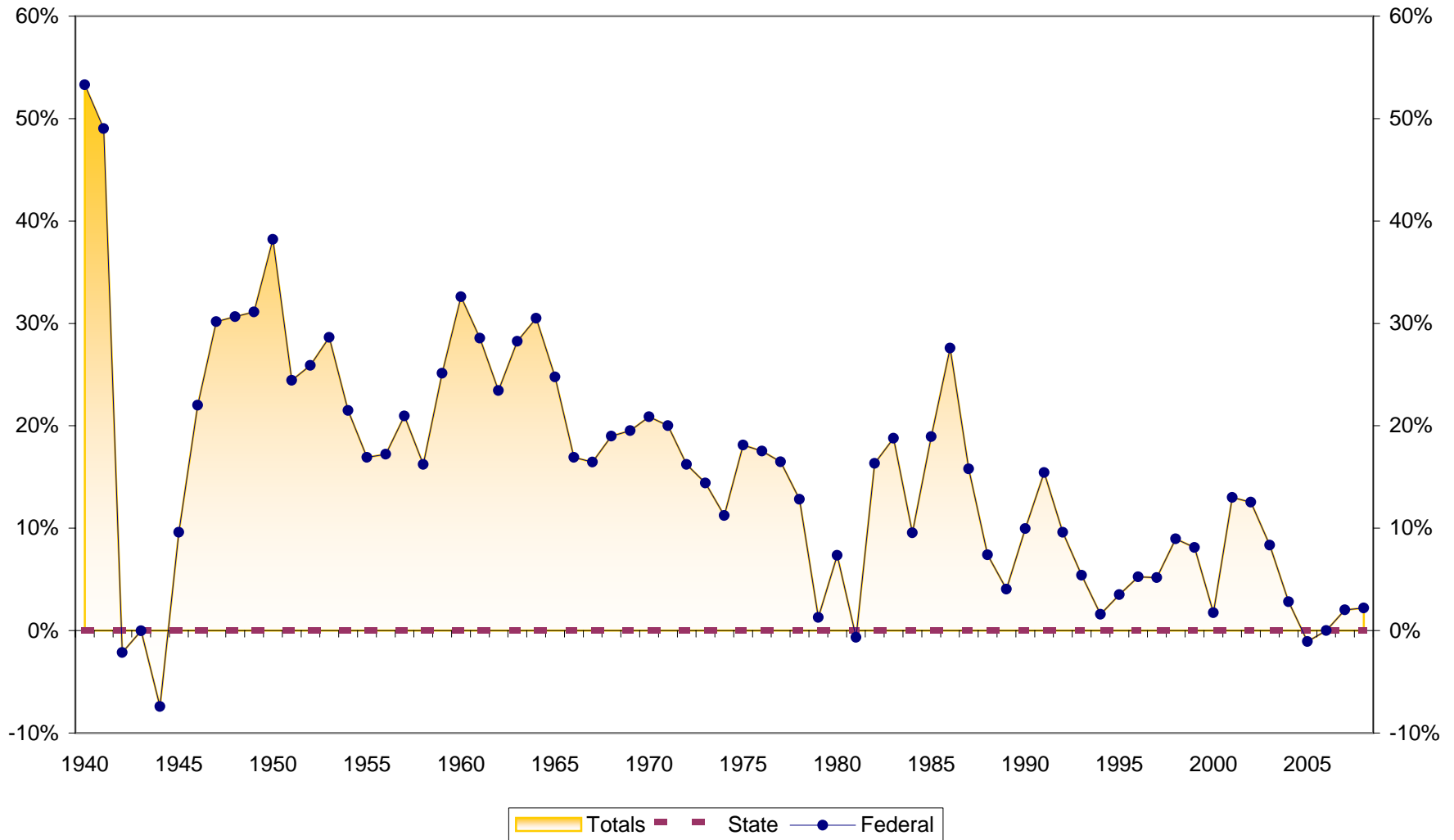
Assets at Delaware Credit Unions (in \$Millions) 1939-2008



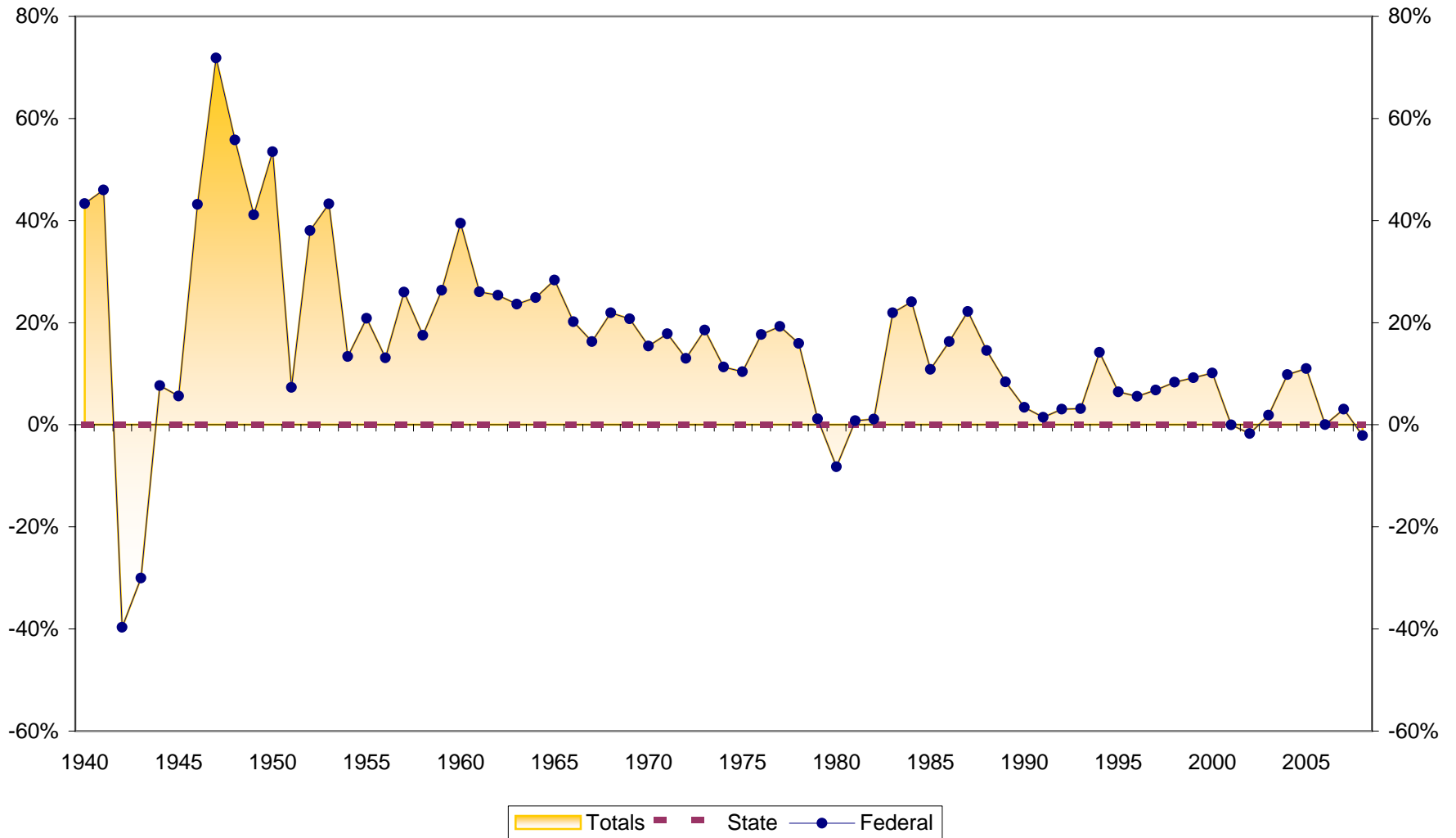
Asset Growth at Delaware Credit Unions 1940-2008



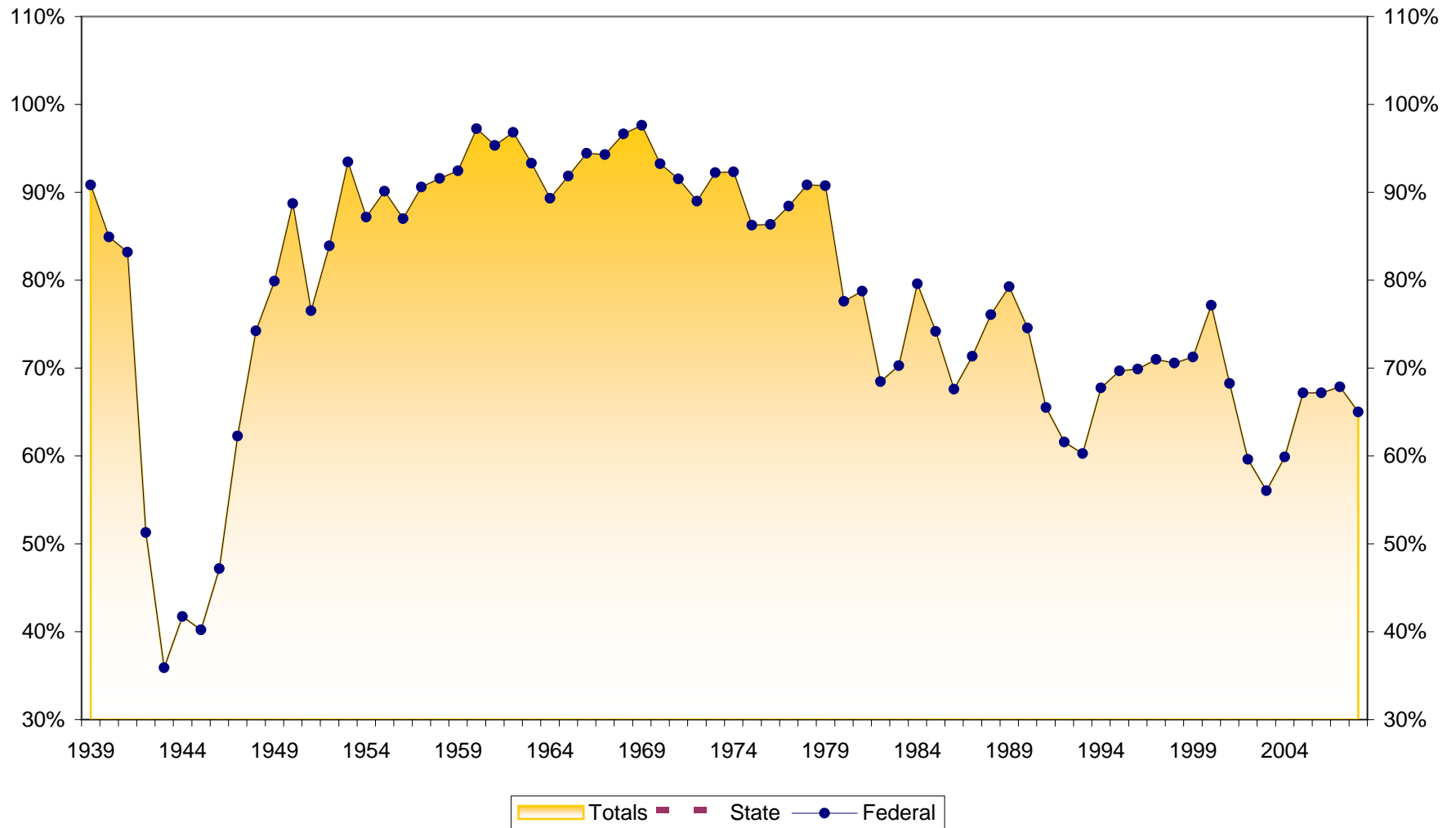
Savings Growth at Delaware Credit Unions 1940-2008



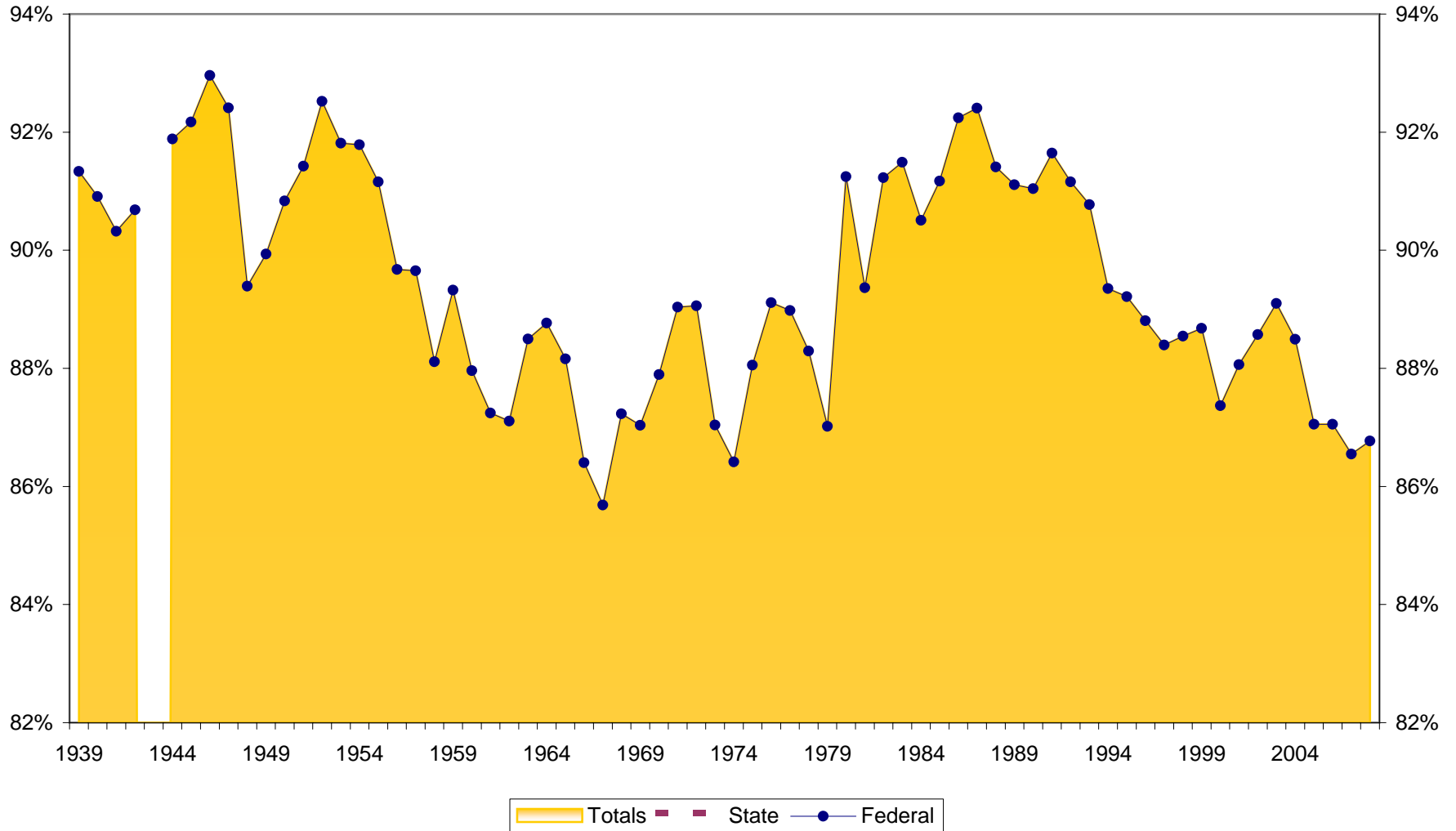
Loan Growth at Delaware Credit Unions 1940-2008



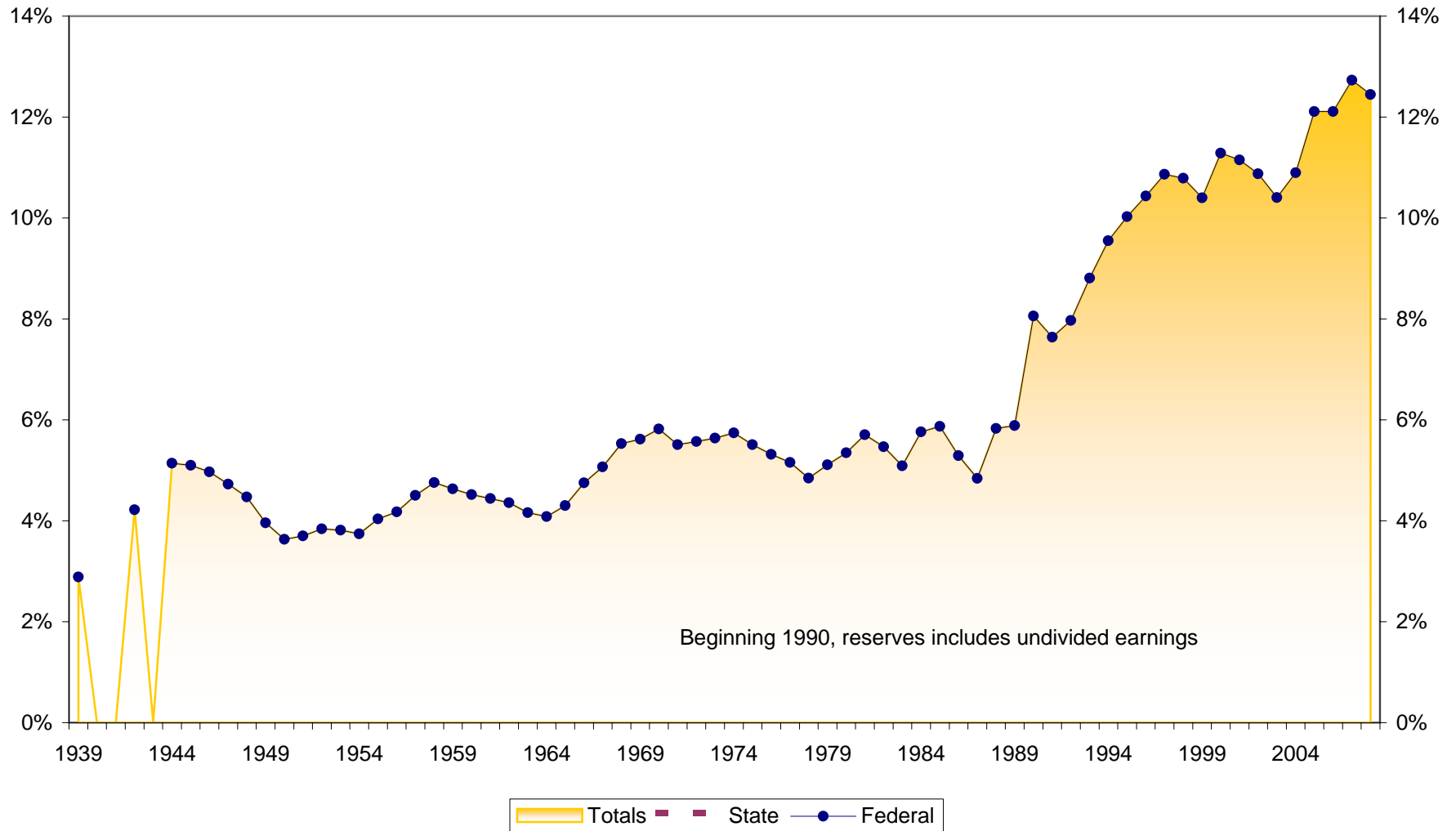
Loans to Savings Ratio at Delaware Credit Unions 1939-2008



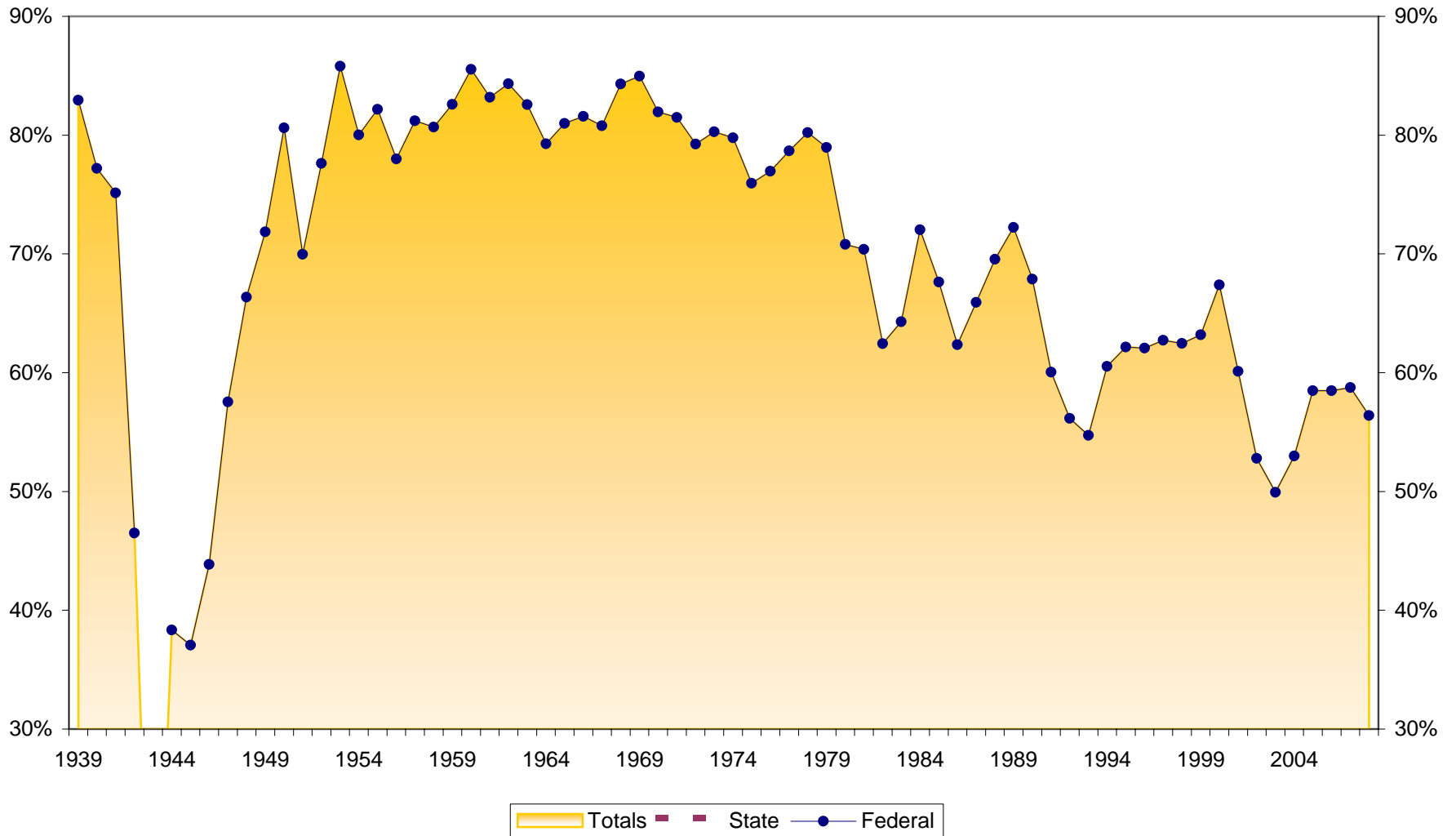
Savings to Assets at Delaware Credit Unions 1939-2008



Reserves to Assets at Delaware Credit Unions 1939-2008



Loans to Assets at Delaware Credit Unions 1939-2008



Dollar Asset Growth at Delaware Credit Unions (in \$Millions) 1940-2008

